

Troubleshooting

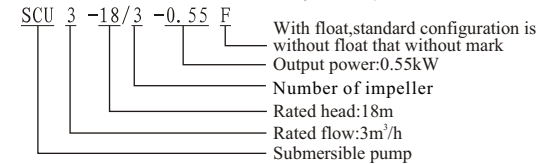
Problem	Possible reasons	Solution
No water	Power interrupt or lack of phases Impeller is blocked motor is burned	To check the reasons of interruption and lack of phases To clean sundries To repair the motor
Less water come out	Over high head Fitter is blocked Impeller is worn Wrong rotation for the impeller	To use the pump into the head range To clean sundries(eg:aqua-plant) To replace the impeller To exchange the wire of any two phases
Windings are burned	Wrong grounding or lack of phase Mechanical seal is damaged and leakage Impeller is blocked Dry running for long time	Eliminate the fault listed in left column, then remove the winding to replaed by new winding , and take insulation varnished treatment.

SCU(QDX) series multi-stage submersible pump Instruction manual

Technical parameter and model symbol

Model	Power (kW)	Rated Flow (m ³ /h)	Rated Head (m)
SCU3-18/3-0.55 QDX3-18/3-0.55	0.55	3	18
SCU3-24/4-0.75 QDX3-24/4-0.75	0.75	3	24

50Hz,60Hz models are available on request



Application

It's mainly used for shallow-water drainage, irrigation and household water supply.

Operation conditions

- Liquid: clean water or non-flammable liquid
- Sand in water or solid which couldn't dissolve in water can not be over than 0.1%(Volume ratio), the granularity is less than 0.2mm.
- Liquid temperature: 0 ~ 40℃
- PH Value: 6.5 ~ 8.5

Features

- Upper outlet Simple and compact structure, superior performance.
- Dual mechanical seal, safe and reliable.
- Linerea plastic base, upper cover and stainless steel cylinder are perfect combination.
- No overload of motor when operating.
- Multistage impeller design with high efficiency.
- Single-phase with thermal protector, making the motor has long life.
- Auto floats are on request.

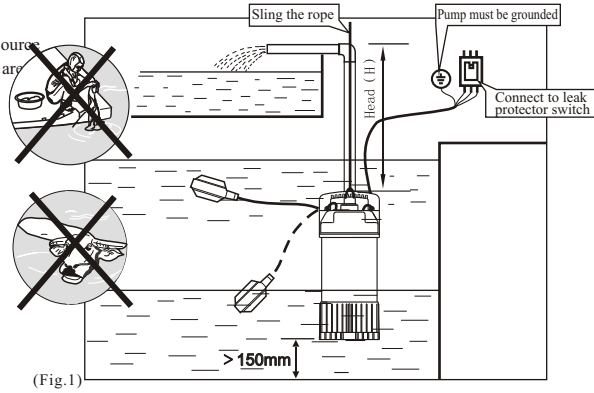
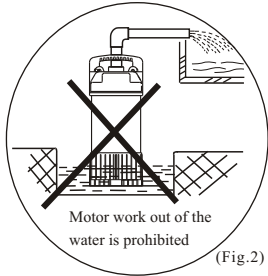
Installation

1. Refer to the installation diagram (Fig.1)
2. To check whether the voltage and frequency meet the ones marked on the nameplate.
3. To check whether the outlet pipes are cracked and firmly connected, to ensure whether the cable and plug are cracked and snapped.
4. Pump should have leakage protection device and should be reliably earthed. The insulation resistance between pump and earth should be greater than 20 megohms.
5. Force to stretch the cable is prohibited when the pump is putting into the water to avoid that the cable or the connected place are broken that will cause leakage.
6. The pump should be suspended vertically in the water.
7. The installation water depth should be less than 5m, the distance between the pump base and bottom should be larger than 150mm (Fig.1)
8. Mark of prevent from electric shock should be set when pump is operating. Swimming, grazing near water source are prohibited. The pump can not be moved before the power is cut off.

Installation diagram

Notice:

washing, grazing, swimming in the water source and children playing near the water source are prohibited when pump is operating.



▲ Working principle of auto-floats:

When the water level rise to the set height, auto-floats connect on, motor power on to work and pump start pumping, when the water level drop to the set height (safety water level), auto-floats disconnect and water pump stop running.

MODEL	L1(mm)	L2(mm)	H(mm)	Extended length of the float(mm)
SCU3-18/3-0.55 QDX3-18/3-0.55	140	370	420	200
SCU3-24/4-0.75 QDX3-24/4-0.75	140	414	470	250

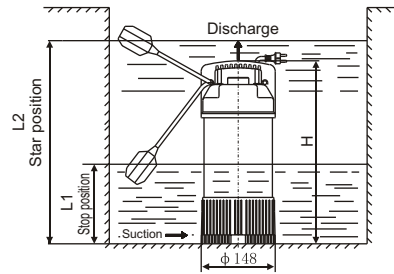
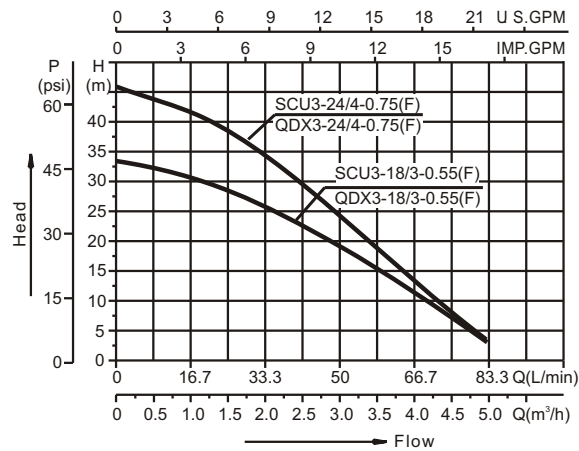
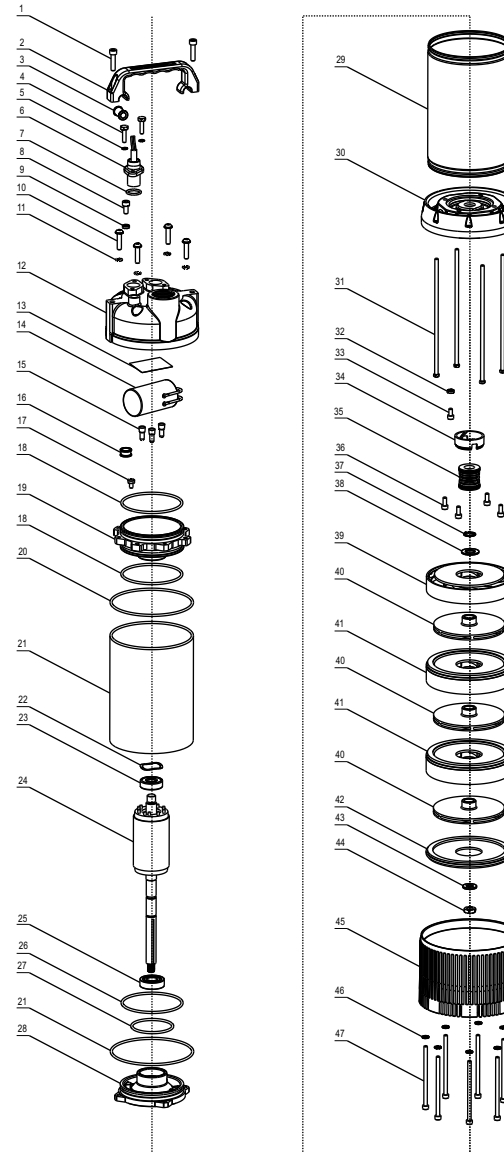


diagram of start position and stop position

Performance curves



Exploded diagram



No.	Name	QTY
1	Hexagon screw	2
2	Handle	1
3	Protected ring	1
4	Hexagon bolt	2
5	Spring Pad	2
6	Cable assembly	1
7	O-Ring	1
8	Hexagon Screw	1
9	Sealpad	1
10	Cross recessed countersunk headscrew with pad	4
11	O-Ring	4
12	Cover	1
13	Wiring Diagram	1
14	Capacitor	1
15	Terminal	3
16	Protecting	1
17	Cross recessed panhead screws and external teeth serrated lock washers assemblies	1
18	Back Cover	1
19	O-Ring	1
20	O-Ring	2
21	Motorhouse assembly	1
22	Three Wave Ring	1
23	Bearing	1
24	Rotor	1
25	Bearing	1
26	O-Ring	1
27	O-Ring	1
28	Front cover	1
29	Outer Sleeve	1
30	Outlet section	1
31	Hexagon Screw	8
32	Pat for oil hole	1
33	Hexagon Screw	1
34	Mechanical seal greaser	1
35	Mechanical Seal	2
36	Hexagon screw	4
37	Axial spring collar	2
38	Plain washer	1
39	Diffuser	1
40	Impeller	N
41	Hydraulic stack	N
42	Cover plate	1
43	Diffuser	1
44	Hex Nut	1
45	Base frame	1
46	Diffuser	8
47	Hexagon screw	8