

<p>CONSTRUCTION STRUCTURE STRUKTUR STRUCTUUR</p>	<p>Tufting 1/10" loop pile Tufté 1/10" bouclé Getuftet 1/10" Schlinge Getuft 1/10" lussenpool</p>	<p>STAIR SUITABILITY ESCALIERS TREPPENEIGNUNG TRAPPENGESCHIKTHEID</p>	<p>EN 1963 A: intensive use</p>
<p>PILE MATERIAL COMPOSITION DU VELOURS POLMATERIAL POOLMATERIAAL</p>	<p>100% PA 6 IMPREL® solution dyed</p>	<p>PERMANENTLY ANTISTATIC ANTISTATIC PERMANENT PERMANENT ANTISTATISCH PERMANENT ANTISTATISCH</p>	<p>ISO 6356 < 2 kV</p>
<p>PRIMARY BACKING SUPPORT TRÄGERMATERIAL TUFTDOEK</p>	<p>non woven PES non woven PES Vlies, PES non woven PES</p>	<p>IMPACT NOISE RATING ISOLATION PHONIQUE TRITTSCHALLVERBESSERUNG GELUIDSISOLATIE</p>	<p>ISO 140-8 25 dB ΔLw</p>
<p>SECONDARY BACKING DOSSIER RÜCKEN TAPIJTRUG</p>	<p>Action Back</p>	<p>SOUND ABSORPTION ABSORPTION PHONIQUE SCHALLABSORPTIONSGRAD GELUIDSABSORPTIE</p>	<p>ISO 354 0.15 αw</p>
<p>PILE WEIGHT POIDS DU VELOURS POLEINSATZGEWICHT POOLGEWICHT</p>	<p>Ca. 540 gr/m²</p>	<p>THERMAL RESISTANCE RÉSISTANCE THERMIQUE WÄRMEDURCHLASSWIDERSTAND WARMTEDOORLAATWEERSTAND</p>	<p>ISO 8302 0,07 m² K/W</p>
<p>TOTAL WEIGHT POIDS TOTAL GESAMTGEWICHT TOTAAL GEWICHT</p>	<p>Ca. 1.800 gr/m²</p>	<p>FASTNESS TO LIGHT SOLIDITÉ A LA LUMIÈRE LICHTECHTHEIT LICHTECHTHEID</p>	<p>ISO 105-B02 ≥ 7</p>
<p>PILE HEIGHT EPAISSEUR DU VELOURS POLHÖHE POOLHOOGTE</p>	<p>Ca. 3,0 mm</p>	<p>COLOUR FASTNESS TO WATER SOLIDITÉ À L'EAU WASSERECHTHEIT WATERECHTHEID</p>	<p>EN ISO 105-E01 ≥ 4-5</p>
<p>TOTAL HEIGHT EPAISSEUR TOTAL GESAMTHÖHE TOTALE DIKTE</p>	<p>Ca. 5,4 mm</p>	<p>FIRE RESISTANCE COMPORTEMENT AU FEU BRENNVERHALTEN BRANDGEDRAG</p>	<p>EN 13501-1 Bfl-s1(if glued)</p>
<p>TUFT DENSITY NOMBRES DE POINTS NOPPENZAHL AANTAL PUNTEN</p>	<p>Ca. 180 000/m²</p>	<p>RUBBING FASTNESS SOLIDITÉ AU FROTTEMENT REIBECHTHEIT WRIJFECHTHEID</p>	<p>EN ISO 105-X12 ≥ 4</p>
<p>PILE DENSITY DENSITÉ DU VELOURS POLROHDICHTHE POOLDICHTHEID</p>	<p>Ca. 0.111 g/cm³</p>	<p>NUMBER OF COLOURS NOMBRES DE COULEURS ANZAHL FARBEN AANTAL KLEUREN</p>	<p>18</p>
<p>CLASSIFICATION CLASSEMENT KLASSIFIKATION CLASSIFICATIE</p>	<p>EN 1307 33 - LC1</p>	<p>WIDTH LARGEUR BREITE BREEDTE</p>	<p>EN ISO 3018 ca. 400 cm</p>
<p>CASTOR CHAIR SUITABILITY CHAISE À ROULETTES STUHLROLLENEIGNUNG ROLSTOELGESCHIKTHEID</p>	<p>EN 985 A: intensive use</p>		




EN14041

CE

20

Balta Industries - Kanegem-
straat 15 - BE 8700 Tielt
DOP: 1011#IE0ABV

Textile Floor Covering EN1307
Notified body 2401



www.baltamediabank.com

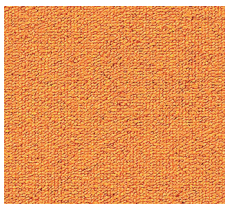
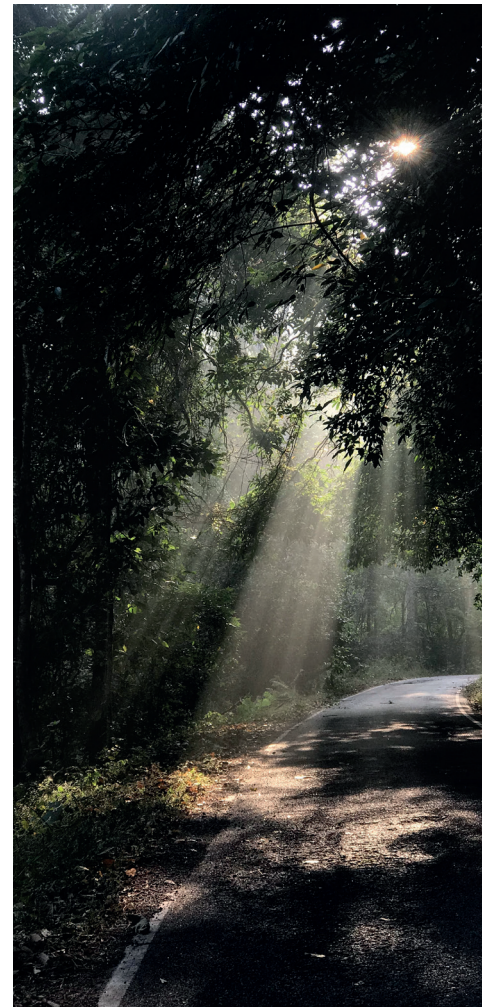
EAC



REG. NR
D00EC6DF

www.pro-dis.info

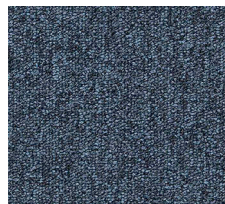




▲ 55



▲ 21



▲ 76



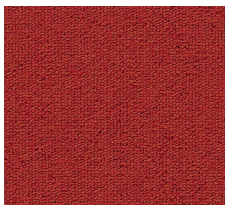
▲ 46



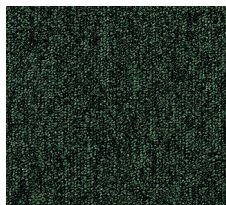
▲ 32



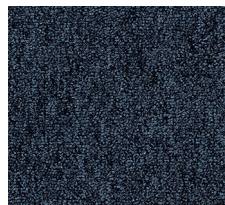
▲ 34



▲ 10



▲ 28



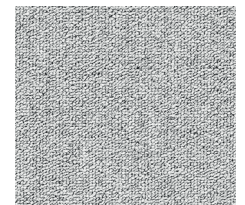
▲ 78



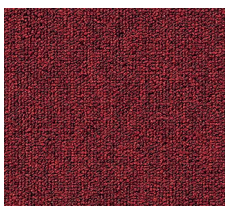
▲ 95



▲ 193



▲ 90



▲ 12



▲ 45



▲ 87



▲ 99



▲ 96



▲ 195