

## Technical Datasheet

# Drain Siphon Freja 50 Horizontal

WETROOM

## DESCRIPTION

Low profile (99 mm) plastic floor drain with horizontal outlet. Outflow capacity of 0.8 liters/second. ABS  
 - « Standard » grating included  
 - Water trap included

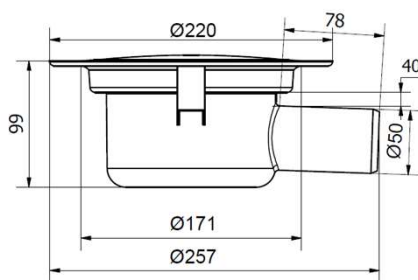
### Key features:

- Designed for ease and practicality, the clamping ring adjusts automatically, the plastic grating simply snaps into place, and the water trap can be removed.
- Easy to clean and maintain.

### Compatible floorings:

- Heterogeneous and homogeneous vinyls in rolls.
- Wetroom floorings.

### Main segments of application:



## TECHNICAL INFORMATION

### Product

Size (mm)	99 height
Diameter (mm)	50 lower x 220 upper
Outflow (L/sec)	0.8
Unit weight (g)	680

### Packaging

Pieces per box	1
Min. order	1 piece

## INSTALLATION

- Should be installed by a plumber, and in accordance with local regulations and the technical specifications provided by Tarkett and the manufacturer.
- For additional details, please refer to Wetroom Concept Documentation.

## CLEANING & MAINTENANCE

Please refer to Wetroom Concept Documentation.

## ARTICLE CODE

	SAP Code	EAN Code
White RAL: 9003 NCS: S 0500 N	1416 002	7393799030512

## Diapositive 62

---

**GCO**

[@Rossi, Jean-Philippe] [@Lintz, Helene]

Croquis modifié, selon message du JP ROSSI du 10/10/2024 à 9h17

Gerard, Christine; 2024-10-10T14:07:08.804