



ALESSANDRA

POLISHED/SATIN STAINLESS STEEL



WARRANTY
10 YEARS

MATERIAL:

- Vertical collectors in polished or satin stainless steel \varnothing 30 mm.
- Horizontal elements in polished or satin stainless steel da 30 x10 mm.

FIXING KIT:

Brackets, airvent, hexagonal tool, plugs and screws for mounting suitable for use on compact or hollow brick, user notice.
The kit is certified from TÜV in compliance with VDI 6036-class 4.

PACKAGING:

Carton angular and profiles protected by a recyclable film in polyethylene. User notice included.

FEATURES:

It is totally made in stainless steel with an unalterable finishing guaranteed during the years.

ACCESSORIES:

See Accessories chapter

Functioning:	<input checked="" type="checkbox"/> Hot water	<input checked="" type="checkbox"/> Electric (see page 356)	
--------------	---	---	--

P. Max: 8 bar	Functioning: hot water	T. Max: 110° C	Connections: 2 x 1/2" gas - 1 x 1/2" gas for airvent
---------------	------------------------	----------------	--

CERTIFICATIONS



ACCESSORIES



Kristal valve square with thermostatic option-chromed

Copper conn. \varnothing 12/14/15
Art. nr. 5991990311165

Multilayer conn. \varnothing 16
Art. nr. 5991990311166



Kristal corner valve with thermostatic option-chromed

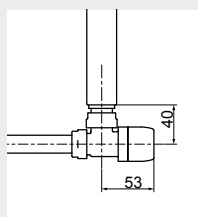
Copper conn. \varnothing 12/14/15
Art. nr. 5991990301148

Multilayer conn. \varnothing 16
Art. nr. 5991990301147

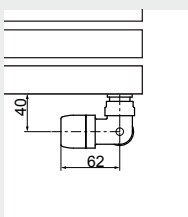


Chromed thermostatic head

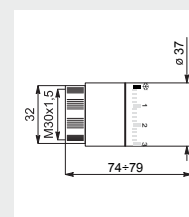
(Kit 2 pieces)
Art. nr. 5035270710015



Quotes for square Kristal valves with thermostatic option

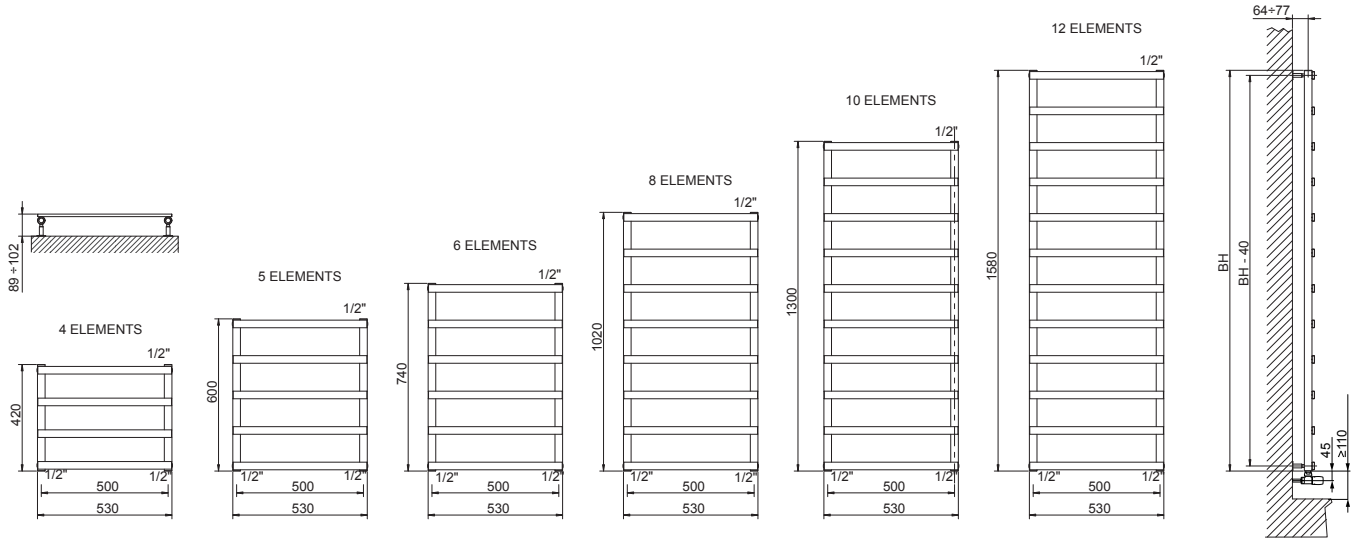


Quotes for corner Kristal valves with thermostatic option



Thermostatic head quotes

Accessories and spare parts - see Accessories chapter



Quotes for Kristal valves

ALESSANDRA POLISHED STAINLESS STEEL

Thermal output
[Watt]

Height [mm]	WIDTH L [mm]	Pipe Centres l [mm]	Art. nr.	Dry Weight [Kg]	Surface [m ²]	Water content [lt]	$\Delta t=50^{\circ}\text{C}$	$\Delta t=30^{\circ}\text{C}$	Exp. n
420	530	500	3551680400001	2,49	0,25	0,92	111	61	1,1923
600	530	500	3551680400002	3,25	0,32	1,24	146	79	1,1928
740	530	500	3551680400003	4,01	0,39	1,51	172	91	1,2357
1020	530	500	3551680400004	4,77	0,53	2,05	223	116	1,2751
1300	530	500	3551680400005	5,52	0,66	2,59	276	143	1,2873
1580	530	500	3551680400006	6,27	0,81	3,13	331	171	1,2945

For output at different Δt than 50°C , please refer to the following formula: desired output = output at $\Delta t 50^{\circ}\text{C}$ x (desired $\Delta t/50$)ⁿ

NEW

ALESSANDRA SATIN STAINLESS STEEL

Thermal output
[Watt]

Height [mm]	WIDTH L [mm]	Pipe Centres l [mm]	Art. nr.	Dry Weight [Kg]	Surface [m ²]	Water content [lt]	$\Delta t=50^{\circ}\text{C}$	$\Delta t=30^{\circ}\text{C}$	Exp. n
420	530	500	3551680450001	2,49	0,25	0,92	125	70	1,1923
600	530	500	3551680450002	3,25	0,32	1,24	164	92	1,1928
740	530	500	3551680450003	4,01	0,39	1,51	193	108	1,2357
1020	530	500	3551680450004	4,77	0,53	2,05	251	139	1,2751
1300	530	500	3551680450005	5,52	0,66	2,59	310	170	1,2873
1580	530	500	3551680450006	6,27	0,81	3,13	372	201	1,2945

For output at different Δt than 50°C , please refer to the following formula: desired output = output at $\Delta t 50^{\circ}\text{C}$ x (desired $\Delta t/50$)ⁿ