



NAIKE



EUROPEAN
WARRANTY

MATERIAL:

- Frame collector in painted mild steel 30 x 30 mm.
- Horizontal heating elements in painted mild steel 15 x 20 mm.

FIXING KIT:

Brackets, airvent, hexagonal tool, plugs and screws for mounting suitable for use on compact or hollow brick, user notice.
The kit is certified from TÜV in compliance with VDI 6036-class 4.

PACKAGING:

Carton angular and profiles protected by a recyclable film in polyethylene. User notice included.

PAINTING PROCESS:

Painted with ecological epoxy powders. (Certificate DIN 55900-1,-2)

COLOURS:

Radiator and accessories: standard white colour RAL 9010-R01.
For other colours price has to be increased by 30%.
Colour chart: see page 540

ACCESSORIES:

See page 508

| | | |
|--------------|---|--|
| Functioning: | <input checked="" type="checkbox"/> Hot water | <input checked="" type="checkbox"/> Dual energy (see page 524) |
|--------------|---|--|

| | | | |
|---------------|------------------------|----------------|--|
| P. Max: 8 bar | Functioning: hot water | T. Max: 110° C | Connections: 2 x 1/2" gas - 1 x 1/2" gas for airvent |
|---------------|------------------------|----------------|--|

CERTIFICATIONS



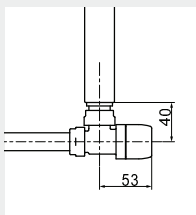
ACCESSORIES

Kristal valve square With thermostatic option White R01 - ral 9010



Copper conn. Ø 12/14/15
Art. nr. 5991990311161

Multilayer conn. Ø 16
Art. nr. 5991990311160

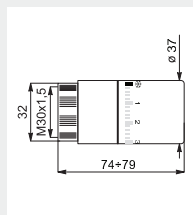


Quotes for square Kristal valves with thermostatic option



White thermostatic head

(Kit 2 pieces)
Art. nr. 5035270710016

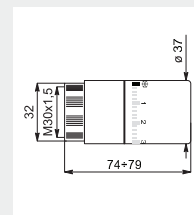


Thermostatic head quotes



Chromed thermostatic head

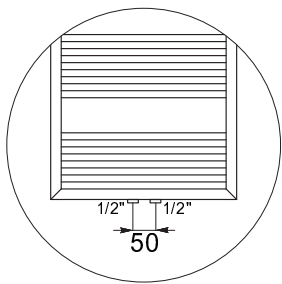
(Kit 2 pieces)
Art. nr. 5035270710015



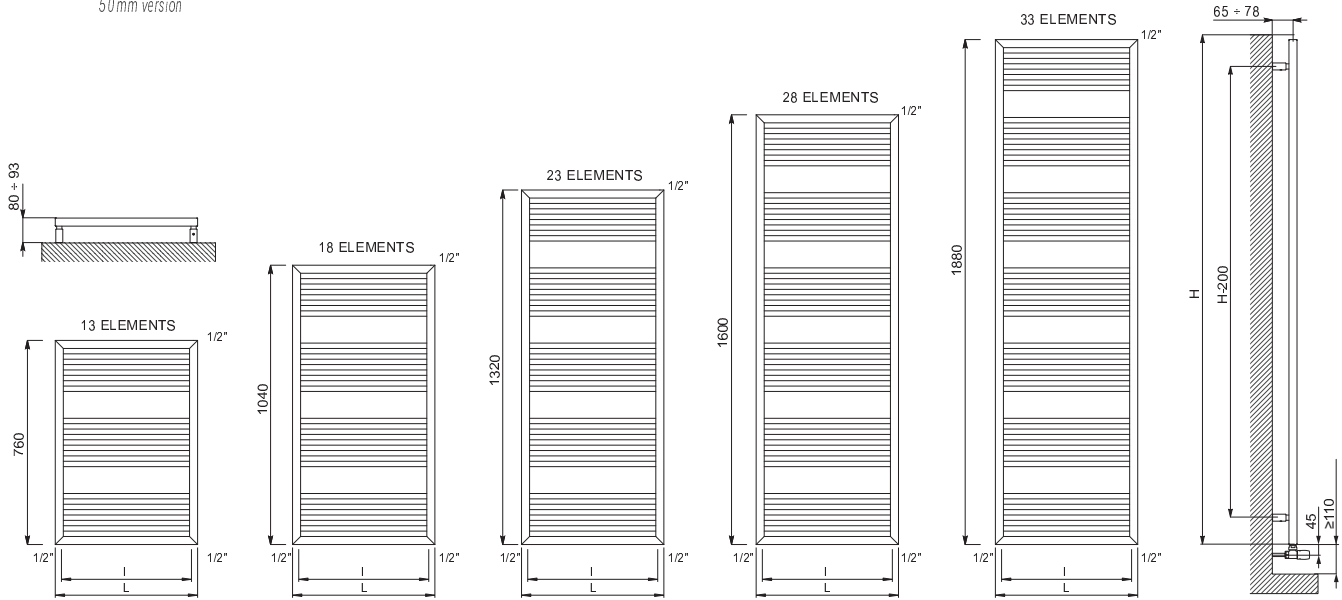
Thermostatic head quotes

If ordered separately from the radiator, the accessories are available in standard white only.

Accessories and spare parts - see from page 508



Detail of the pipe centres
50mm version



Quotes for Kristal valves

NAIKE

| Height [mm] | WIDTH L [mm] | Pipe Centres l [mm] | Art. nr. | Pipe Centres 50 mm | | | Thermal output [Watt] | | Exp. n | Dual energy kit [Watt] | |
|----------------|-----------------|------------------------|---------------|--------------------|--------------------|------------------------------|--------------------------|---------|-----------|------------------------------|---------|
| | | | | Art. nr. | Dry Weight [Kg] | Surface [m ²] | Water content [l] | Δt=50°C | | | Δt=30°C |
| 760 | 480 | 450 | 3551826102021 | 3551826102029 | 7,00 | 0,60 | 2,90 | 350 | 191 | 1,1867 | 400 |
| | 530 | 500 | 3551826102025 | 3551826102033 | 7,60 | 0,65 | 3,10 | 381 | 208 | 1,1886 | 400 |
| | 580 | 550 | 3551826102005 | 3551826102015 | 8,20 | 0,70 | 3,40 | 412 | 224 | 1,1904 | 400 |
| 1040 | 480 | 450 | 3551826102022 | 3551826102030 | 9,20 | 0,80 | 3,80 | 459 | 246 | 1,2193 | 500 |
| | 530 | 500 | 3551826102026 | 3551826102034 | 10,00 | 0,85 | 4,00 | 499 | 268 | 1,2142 | 600 |
| | 580 | 550 | 3551826102006 | 3551826102016 | 10,80 | 0,92 | 4,30 | 538 | 290 | 1,2092 | 600 |
| 1320 | 480 | 450 | 3551826102002 | 3551826102012 | 11,40 | 0,97 | 4,60 | 568 | 303 | 1,2307 | 700 |
| | 530 | 500 | 3551826102004 | 3551826102014 | 12,40 | 1,05 | 4,90 | 617 | 330 | 1,2242 | 700 |
| | 580 | 550 | 3551826102008 | 3551826102018 | 13,30 | 1,14 | 5,20 | 667 | 358 | 1,2177 | 700 |
| 1600 | 480 | 450 | 3551826102023 | 3551826102031 | 13,70 | 1,16 | 5,50 | 679 | 364 | 1,2221 | 700 |
| | 530 | 500 | 3551826102027 | 3551826102035 | 14,80 | 1,26 | 5,80 | 739 | 397 | 1,2156 | 700 |
| | 580 | 550 | 3551826102009 | 3551826102019 | 15,90 | 1,36 | 6,20 | 799 | 431 | 1,2092 | 900 |
| 1880 | 480 | 450 | 3551826102024 | 3551826102032 | 15,90 | 1,35 | 6,30 | 793 | 427 | 1,2135 | 900 |
| | 530 | 500 | 3551826102028 | 3551826102036 | 17,20 | 1,46 | 6,70 | 864 | 467 | 1,2071 | 900 |
| | 580 | 550 | 3551826102010 | 3551826102020 | 18,50 | 1,57 | 7,10 | 936 | 507 | 1,2007 | 900 |

Art. nr. are referred to colour WHITE R01 - RAL 9010 version.

For output at different Δt than 50°C, please refer to the following formula: desired output = output at Δt 50°C x (desired Δt/50)ⁿ