



## A9 CPC pressurized solar water heater

A9-8H  
A9-10H  
A9-12H  
A9-15H  
A9-20H



■ Please an appropriate preservation

### 1. Foreword

Dear customer:

Congratulations on your purchase of Suntask high efficient solar water heaters A9, Installing for superior performance in order to operate reliably at optimal efficiency, it must be correctly installed. Please ensure that you employ the services of a certified installer who will ensure the installation follows the manufacturer's guidelines and meets all government and health regulations.

The Suntask A9 system has been designed with ease of installation as one of the key design features. This manual includes a clear step by step installation guide. If you come across any issues not covered by this manual during the installation, please contact with your Suntask accredited installer or representative agent.

Please check the manual before intallation



### 2. Product Description

A9 new generation of integrated pressurized solar water heater, vacuum tube with high solar absorption and low emission to the coating will absorb solar radiation converted into heat, quickly spread to the tank through the heat pipe inserted in the vacuum tube, so that the whole tank water temperature is gradually increased. The vacuum has a natural ability to track the sun as long as there is solar radiation, because of one direction conductive heat pipe let the vacuum tube could work well even if the extreme cold region throughout the year can be highly efficient operation.

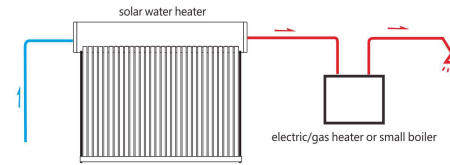


Diagram of family with gas water heaters, small boilers connection.

### 3. Specification Characteristics:

#### Specification Characteristics: New high pressurized solar water heater-A9

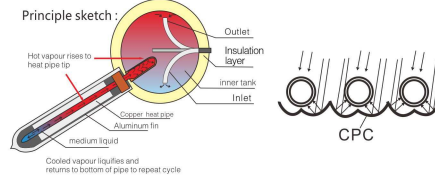
1. Start up quickly, heat pipe transfer the heat energy into the storage tank swiftly.
2. Withstand pressure of max 10bar, can be connected with city water directly, work automatically.
3. the storage tank and the heat pipe mechanical sealed, the solar water heater can still work even with several tubes breakage.
4. With reasonable design and choose excellent material, the inner tank is without any breakage after one hundred thousand times' c high pressure testing.
5. high density polyurethane foam, well insulation.
6. Can be installed in series and parallel to be a solar hot water system.
7. Can be connected with gas water heater and small boiler, also can preheat the water in advance.
8. Can be installed in anywhere ( for example, you can install the solar water heater on the ground of the garden, and use the hot water on the third floor).

#### Heat pipe advantages:

1. Transfer the heat energy quickly, we use special medium in the heat pipe and it can transfer the heat energy more than 1000 times faster than copper.
2. Highly efficient absorber, it increase 20% or more than ordinary solar water heater.
3. No water and no water scale inside the evacuated tubes, the tubes will not be cracked even if during -40°C.
4. Withstand pressure of 0.6mpa, can be connected with the city water directly.
5. Can still work even with several tubes breakage. The water will not flow out from the storage tank.
6. Can be used in sunny days even if in the extreme cold climate.

### 4. Product principle

A9 new generation integrated pressurized solar water heater's tank is similar to the electric water heater, so it can withstand the pressure of tap water and the swelling pressure of water after heating, the hot water will be push out by pressure of tap water. Evacuated tubes absorb the solar thermal energy, then transfer the heat through the heat pipe to the pressure tank and raises the temperature of the water inside the tank. Evacuated tubes doesn't touch the water, the system can withstand the pressure.



#### Integrated pressurized solar water heaters advantages:

1. Overcoming the non-pressure solar water heater's disadvantage that can't withstand the pressure.
2. Resolving the problem of water temperature isn't constant which is caused by mismatch of natural pressure of non-pressure solar water heater with changeable tap water pressure.
3. Overcoming the issue that lack of enough pressure because of low installation location
4. Resolving the problem of flooding which is caused by water level controller is out of order.

### 5. Technical data

#### Absorber

Vacuum degree: $\leq 5 \times 10^{-3}$ Pa	Absorbing coating property $\geq 0.93$	Emission ratio $\leq 0.08$
Transition temperature: $\leq 25^\circ\text{C}$	Vacuum tube stagnation parameters: $230^\circ\text{C}$	
Freezing resistance: $-40^\circ\text{C}$	Lifetime: $\geq 15$ year	
Wind resistance: 30m/s(11 force)	Hail resistance: 35mm	
Glass material: High borosilicate 3.3 glass	Heat pipe: TU1	
Condenser size: dia.14mm*65mm		
Vacuum tube size(mm): $\Phi 58 \times 1800$ mm		

#### Principal machine

Inner tank material: SUS316L stainless steel
Heat pipe vacuum tube size: $\Phi 58 \text{mm} \times 1800 \text{mm}$
Working pressure: 6 Bar
Daily hot water temperature: $45-90^\circ\text{C}$
Daily hot water output: A9-8H(100L), A9-10H(125L), A9-12H(150L), A9-15H(200L), A9-20H(250L)
Insulation: Polyurethane foam
Heat preservation: 72 hours
Outer tank material: PVDF
Frame: Thicker galvanized steel

zhejiang shentai solar energy co.,ltd  
www.suntasksolar.com E-mail:info@suntasksolar.com

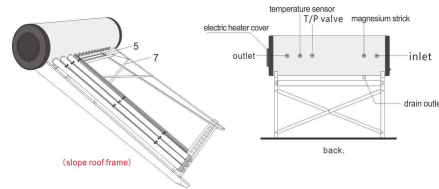
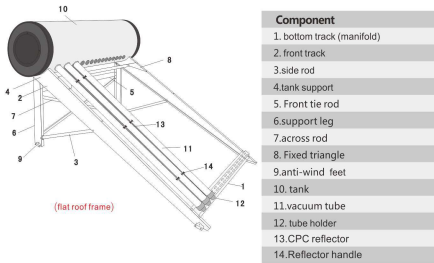
## 6. Product installation

### Special warning :

1. Installing the water heater must be caution of on the high position what required of a professional installer operation, pay attention to their personal safety!
2. Transportation and installation, gently especially for the fragile glass tubes
3. Before installation, please carefully read the installation instructions in strict accordance with the manual operation, and by the professional installation. Otherwise the improperly installed may lead to serious personal injury and property damage, the installation is divided into four parts: frame installation, tank installation and tubes installation and connection of the water heater piping.

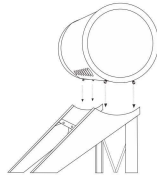
### [ frame mounting ]

Solar water heater should be in the sunny square, use galvanized iron wire or expansion screws or cement and fixed the roof pad bracket under hard objects

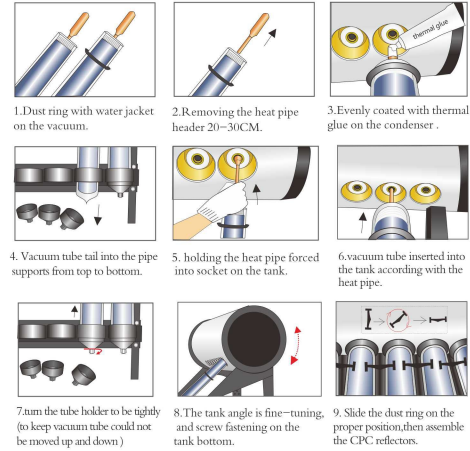


### [Tank installation]

Put the tank on the tank support after the frame completed assembly. Place the four screw bolts on the tank into the tank support, but let the screws not to be turned tightly temporarily. Please pay attention to the direction of vacuum tube hole to be the same angle direction with the tube holder on the bottom track(manifold). Fix the tube holders on the bottom track then turn down its male part.

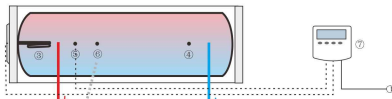


### Tube installation:

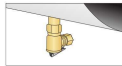


### [Pipeline connections]

Connect the water pipe line , try to use the special composite pipe or cross-linked pipe, to reduce the water rust and heat loss, piping using insulation materials the better is fixed on the stand or building, if in the cold areas, drain valve can be added, so the emptying of the water in the pipe line.



- ①inlet ②outlet ③electric heater ④magnesium bar  
⑤temperature sensor ⑥ T/P valve ⑦controller

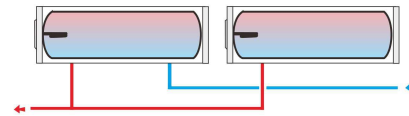


**!** The T/P exhaust port stringent blockage. It should have received an additional exhaust pipe to prevent the tank internal pressure is too high splash hot water to cause damage to persons and property.

### [Roof-mounted mode]



Placement of water heaters can be selected according to user requirements



Solar water heater can be connected more than in series, parallel way into the collective hot water system.

## 7. Product Instruction

"A9" : the new pressurized solar water heater, the cold water inlet connect with city water directly. Can withstand high pressure when it works. (Means if the cold water supply pressure is stable, when open the outlet valve will have hot water in time with same pressure;)

### Attention(important):

1. During the storm with lightning, please DO NOT use solar water heater and keep the tank full of water during the typhoon/hurricane;
  2. In the summer, if hot water not much used or water temperature is so high, please take some shade to cover part of vacuum tube to reduce the heating;
- This solar water heater can use all day for four seasons; the lifetime is more than 15years; During this period, you can take some simple maintenance service as follows:

### 1. clean the vacuum tubes

If in lots of dust and dry area( North area), the vacuum tubes will have so much dirty on it, it will reduce the reflecting rate for long time. So you need to clean vacuum tubes at least half year or one year according to the dirt condition. You can use soap water or washing powder water to help clean vacuum tubes. In the rainy areas, it's no need to do this.

### 2. clean the incrustation scale:

If the water temperature is too high, or water quality are not good in some areas, or use the water directly from ground that includes lots of impurity, all of these will cause lots of scale in the tank this will affect the efficiency of solar water heater. So you need to clean the tank exchange magnesium bar in every one or two years. This you must ask professional workers to help do it.

## 8. Warranty Ordinance

Thank you for using Shentai company solar water heaters. Our company will take service at list for you which according to the rules by the Protection of Consumers' Rights and Interests: the products can be exchanged free if the products has manufacturing defects or quality issues within 7days, warranty is 3years for main machine, and 1 year for spare parts.

## 9. Trouble Shooting

Trouble	Trouble reasons	Solutions
Sunny day , no hot water	The front of solar water heaters have occluder . high tower, trees, tall buildings, fences or other water heaters, short sunshine ,causing the water temperature is low. 1. Vacuum tube surface have thick dust. 2. hot outlet valves got leakage or can not closed well. 3. Vacuum tube or heat pipe damaged . 4. The T/P valve on the main water tank can not closed which cause the water keep flowing.	Remove the occluder or move the solar water heaters to the place without occluder. 1. cleaning the tube surface and reflector. 2. check the valves. 3. replace tube or heat pipe. 4. check T/P valve.
No hot water come down during winter time.	1. pipelines freezes in winter time (Cold area winter is not normal, sometimes to freeze in the morning, after sun defrost in afternoon) . 2. weather is too cold .	1. The whole pipeline use heat pipe preservation . 2. Use electric heating belt together with water pipe lines, outside with heat pipe preservation.