

350-351

THERMOELECTRIC HEAD 2 WIRES AND
4 WIRES WITH MICROSWITCH

FEATURES

Thermoelectric heads 350-351 are used for the discrete control of heating and cooling systems in direct proportion to the applied control voltage.

The control of the actuators is performed by a 0-10 V DC signal via a central DDC system or by a room thermostat.

Principal area of application is the building management systems range.

The thermoelectric heads are normally in close position.

Possible combination with manifold equipped with interception valves and zone valves.

ART.350 2 wire heads: power only (L,N or +/-).

ART.351 4 wires heads power (L,N or +/-) and also a normally open microswitch with floating contact allows direct operation of a pump or fan control unit.

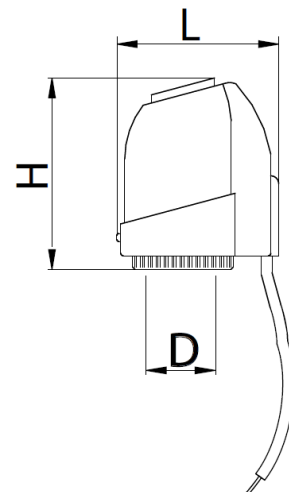
3500000000 - 3510000000	
<i>Voltage</i>	230V AC 50/60 Hz
<i>Operating power</i>	2 W
<i>Switch-on current</i>	Max 300mA
<i>Protection</i>	IP54
<i>Storage temperature</i>	-25°C / 65°C
<i>Rel. Humidity</i>	Max 80%
<i>Closing and opening timing</i>	3-4 minutes
<i>Cable lenght</i>	1 m

35000V2400 - 35100V2400	
<i>Voltage</i>	24V AC/DC 0/60 Hz
<i>Operating power</i>	2 W
<i>Switch-on current</i>	Max 250mA
<i>Protection</i>	IP54
<i>Storage temperature</i>	-25°C / 65°C
<i>Rel. Humidity</i>	Max 80%
<i>Closing and opening timing</i>	3-4 minutes
<i>Cable lenght</i>	1 m

DIMENSIONS

350 - THERMOELECTRIC HEAD 2 WIRES				
CODE	VERSION	D	L	H
3500000000	230V	M30X1,5	61,5	56
35000V240D	24V	M30X1,5	61,5	56

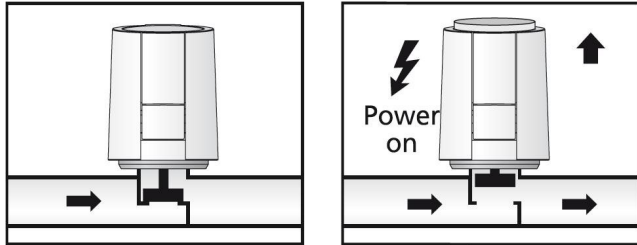
351- THERMOELECTRIC HEAD WITH MICROSWITCH 4 WIRES				
CODE	VERSION	D	L	H
3510000000	230V	M30X1,5	61,5	56
35100V240D	24V	M30X1,5	61,5	56



FUNCTION DISPLAY

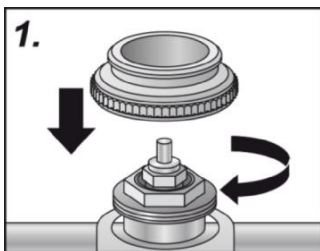
The function display (all-round display) of the actuator shows at first glance whether the valve is open or closed; this can be also felt in the dark.

For the version NC: Normally closed extracts the function display when the valve opens.

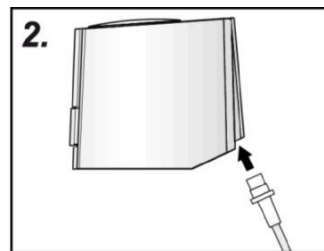


INSTALLATION WITH VALVE ADAPTER

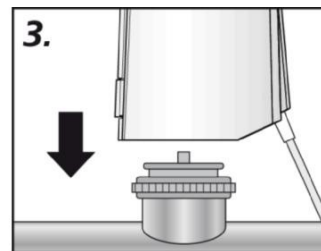
The valve adapter assortment guarantees a perfect match of the actuator to almost all valve bottoms and heating circuit distributors available on the market. The thermoelectric head is simply plugged on to the valve adapter previously installed manually.



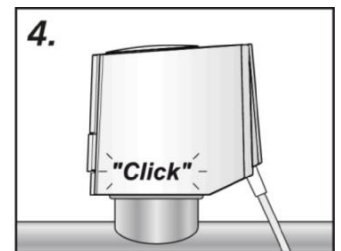
1. Screw the adapter manually onto the valve.



2. Connect the line to the actuator.

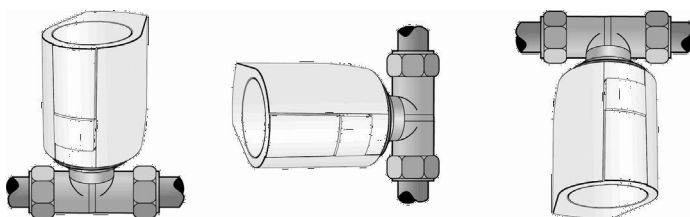


3. Position the actuator manually in vertical position to the valve adapter.



4. Latch the actuator to the valve adapter by manually applied vertical pressure; this can be done noiselessly and without any problems.

INSTALLATION POSITION



vertical

horizontal

"overhead"

The actuator must be installed preferably in vertical or horizontal installation position.

For "overhead" installation special circumstances (e. g. drainwater) can reduce the lifetime of the actuator.