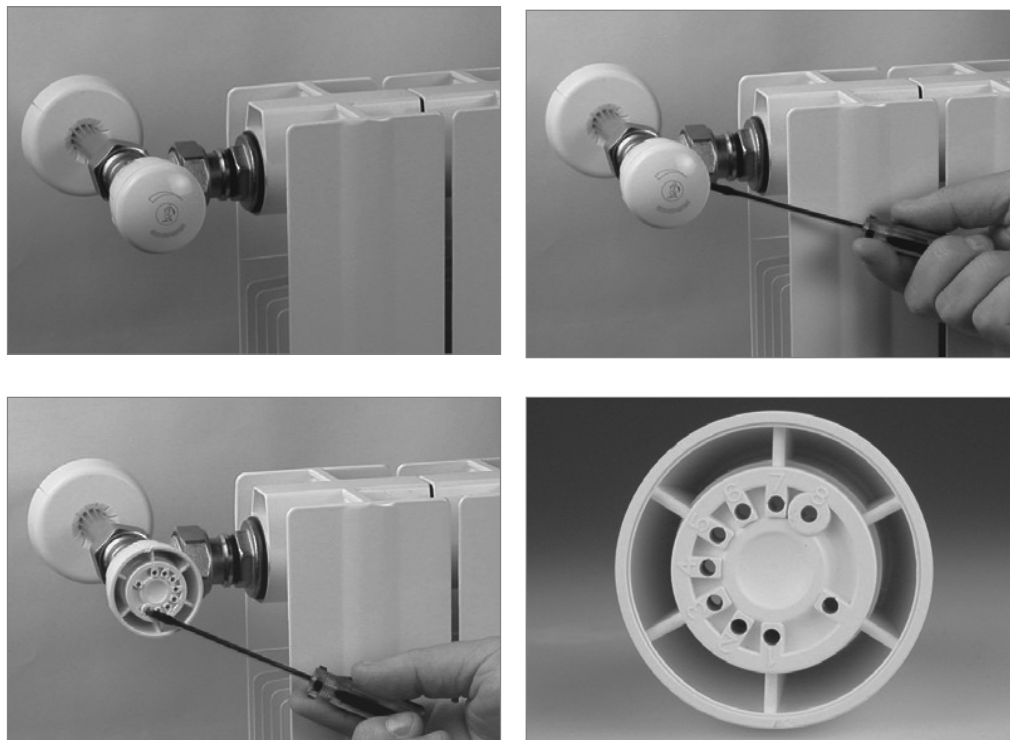


## MICROMETRIC THERMOSTATIC VALVES

### Micrometric adjustment

The series of micrometric thermostatic valves Giacotech features, in addition to a more comfortable operation handle and a series of parameters already widely described in the introduction, and the possibility of making the micrometric adjustment through which it is possible to separate the opening of the valve operating in manual. Removing the upper part of the handwheel access to the graduation scale is easy.



The adjustment can be made shifting the metal pin in the position that best suits one's needs, according to the specific diagrams reported in the Hydraulic Versions and Characteristics.

### Technical Data


- Fluids: hot water
- Temperature range: 5÷110 °C
- Max operating pressure for manual applications: 16 bar
- Max operating pressure in association with thermostatic heads: 10 bar
- Max differential pressure:
  - 0,14 MPa (1,4 bar), 3/8" - 1/2" - 3/4" (except for F series)
  - 0,07 MPa (0,7 bar), 3/4" (only F series)
  - 0,04 MPa (0,4 bar), 1"

### Materials

- Bodies, caps and pipe unions: brass UNI EN 12165 CW617N
- Operation handwheels: ABS
- Self-sealing: EPDM

## Hydraulic versions and characteristics

In the following tables the values of Kv are reported according to the micrometric adjustment set positioning the metal pin (as described in the previous paragraph).  $\Delta T=2K$  refers to the situation of valve with thermostatic head installed.



**R431TG**

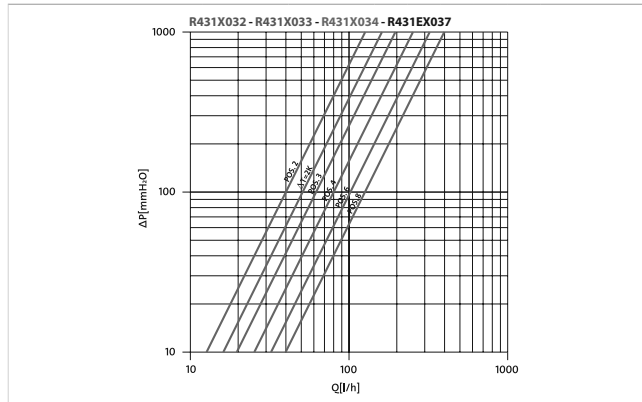
Micrometric angle valve with thermostatic option, chrome plated, adaptor connection and self-sealing tail piece.


PRODUCT CODE	SIZE	POSITION					$\Delta T=2K$
		2	3	4	6	8	
R431X032	3/8"x16	0,40	0,62	0,80	1,02	1,26	0,51
R431X033	1/2"x16	0,40	0,62	0,80	1,02	1,26	0,51
R431X034	1/2"x18	0,40	0,62	0,80	1,02	1,26	0,51
R431EX037	1/2"x3/4"E	0,40	0,62	0,80	1,02	1,26	0,51

**NOTE**

R178, R179 or R179AM adaptor connections to be used.

Use R178E, R179E adaptors for R431EX037





**R421TG**


Micrometric angle valve with thermostatic option, chrome plated, iron pipe connection and self-sealing tail piece.

PRODUCT CODE	SIZE	POSITION					$\Delta T=2K$
		2	3	4	6	8	
R421X132	3/8"x3/8"	0,40	0,58	0,78	1,00	1,26	0,51
R421X133	1/2"x1/2"	0,42	0,62	0,80	1,02	1,26	0,51
R421FX004	3/4"x3/4" <sup>ns</sup>	-	-	-	-	2,37	0,80
R421X034	3/4"x3/4" <sup>ns</sup>	0,50	0,80	0,90	1,25	1,41	0,76
R421X035	1"x1" <sup>ns</sup>	1,37	1,85	2,38	3,36	3,98	1,22

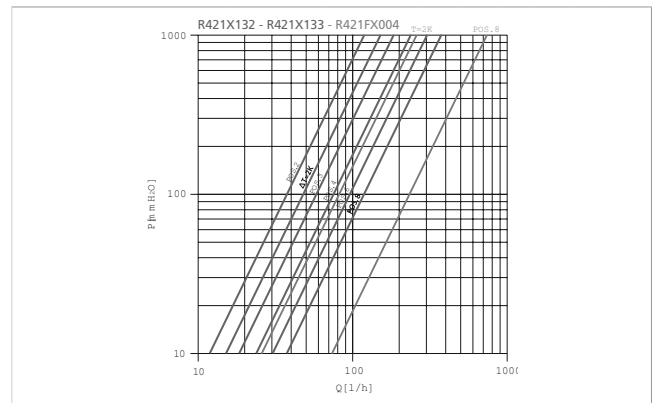
**NOTE**


\* Tail pieces without self sealing

CERTIFICATION AND SYMBOLS R421X132-R421X133-R421FX004



028





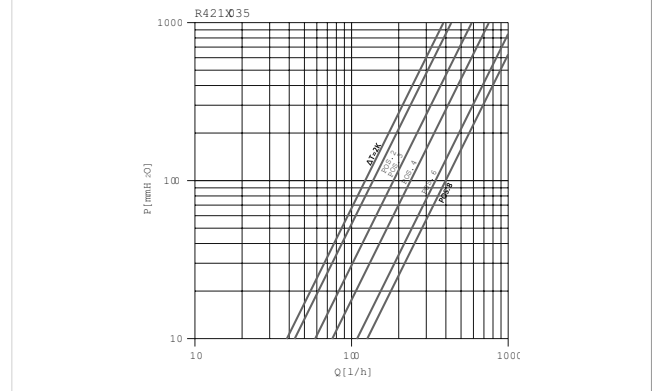
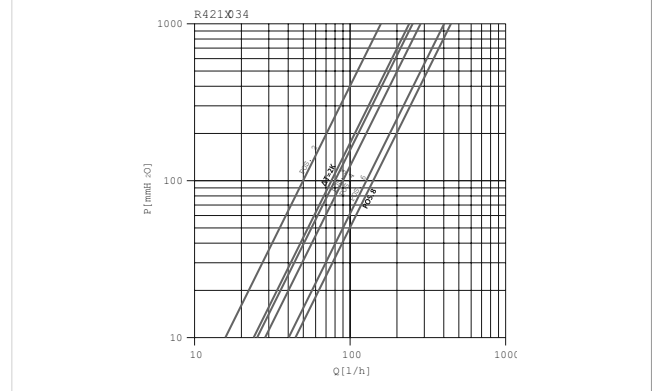
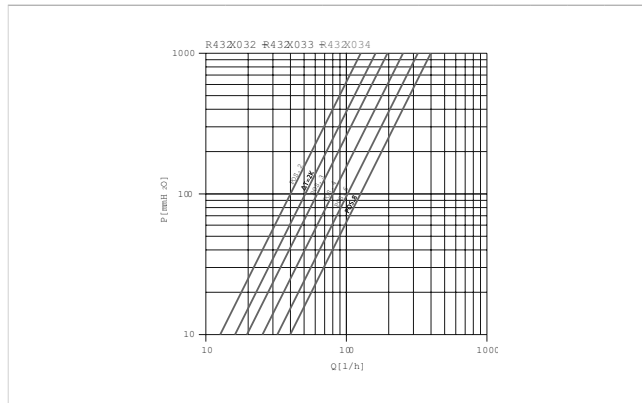
**R432TG**

Micrometric straight valve with thermostatic option, chrome plated, adaptor connection and self-sealing tail piece.

PRODUCT CODE	SIZE	POSITION					$\Delta T=2K$
		2	3	4	6	8	
R432X032	3/8"x16	0,40	0,62	0,80	1,02	1,26	0,51
R432X033	1/2"x16	0,40	0,62	0,80	1,02	1,26	0,51
R432X034	1/2"x18	0,40	0,62	0,80	1,02	1,26	0,51

**NOTE**

R178, R179 or R179AM adaptor connections to be used.



# R16TG, R17TG



Energy  
Management

## Lockshields for radiators, with self-sealing tail piece

Datasheet  
1034EN 06/2020



R16TG



R17TG

Chrome plated brass lockshields for radiators, angled (R16TG) or straight (R17TG), with iron pipe connection or connection for copper, plastic or multilayer pipe adaptor. Equipped with self-sealing tail piece.

### Versions and product codes

SERIES	PRODUCT CODE	CONNECTIONS	TYPE
R16TG	R16X032	3/8" x 3/8"	Angle
	R16X033	1/2" x 1/2"	
	R16EX037	1/2" x 3/4"E	
R17TG	R17X032	3/8" x 3/8"	Straight
	R17X033	1/2" x 1/2"	
	R17EX037	1/2" x 3/4"E	

#### Accessories

• R178E, R179E: Eurocone adaptors for copper, plastic or multilayer pipe

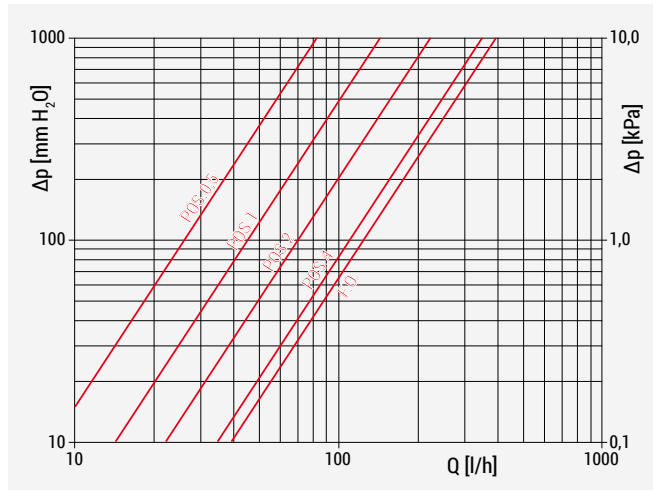
## Technical data

### Performance

- Fluid of use: water and glycol solutions (max. 30 %)
- Temperature range: 5+110 °C
- Max. working pressure: 16 bar

### Hydraulic features

#### R16X032



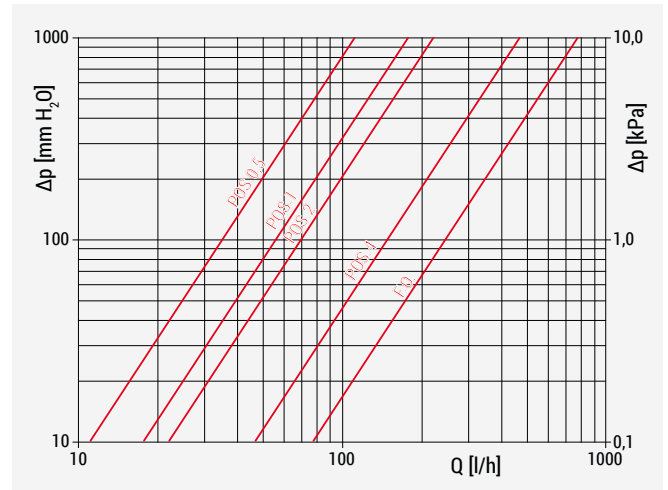
N° of opening turns of the lockshield, starting from Fully Closed position

N° of turns	0,5	1	2	4	F.O.
Kv	0,26	0,45	0,70	1,22	1,34

### Materials

- Body, cap, stem and main components: UNI EN 12165 CW617N chrome plated brass
- Gaskets: EPDM

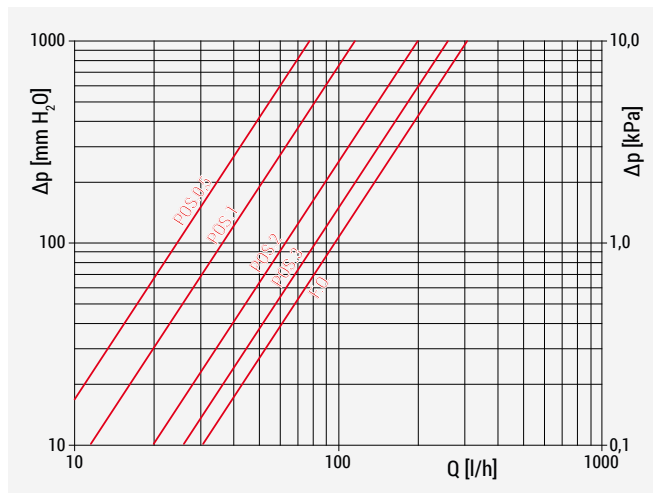
#### R16X033, R16EX037



N° of opening turns of the lockshield, starting from Fully Closed position

N° of turns	0,5	1	2	4	F.O.
Kv	0,35	0,57	0,70	1,56	2,50

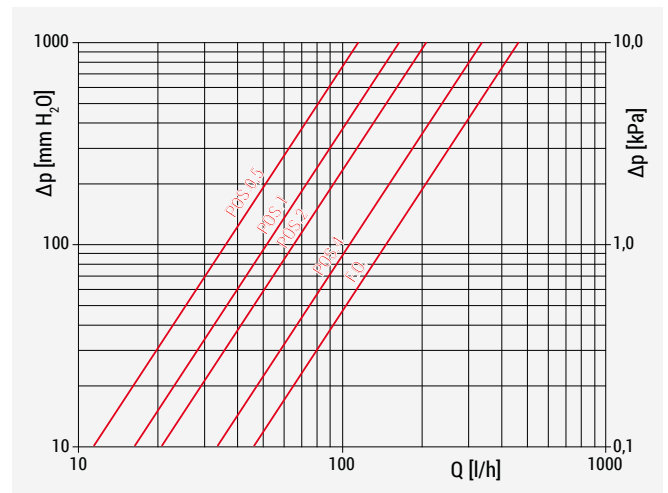
#### R17X032



N° of opening turns of the lockshield, starting from Fully Closed position

N° of turns	0,5	1	2	3	F.O.
Kv	0,24	0,37	0,63	0,81	0,96

#### R17X033, R17EX037

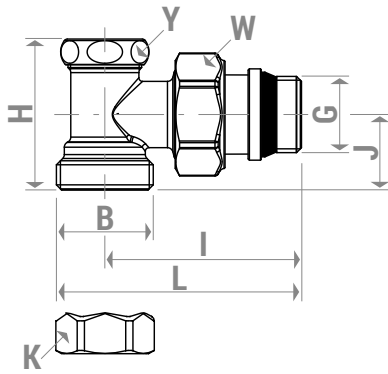


N° of opening turns of the lockshield, starting from Fully Closed position

N° of turns	0,5	1	2	4	F.O.
Kv	0,37	0,51	0,67	1,13	1,55

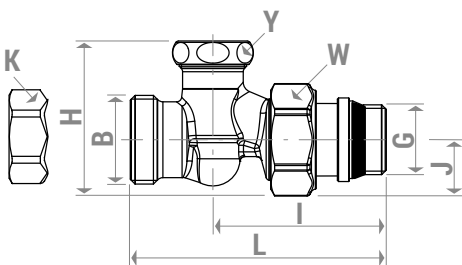
## ➤ Dimensions

### R16TG



PRODUCT CODE	G x B	H [mm]	I [mm]	J [mm]	K [mm]	L [mm]	Y [mm]	W [mm]
R16X032	3/8" x 3/8"	34	50	18	21	62	19	27
R16X033	1/2" x 1/2"	40	53	21	25	67	22	30
R16EX037	1/2" x 3/4"E	40	53	21	-	67	22	30

### R17TG



PRODUCT CODE	G x B	H [mm]	I [mm]	J [mm]	K [mm]	L [mm]	Y [mm]	W [mm]
R17X032	3/8" x 3/8"	38	51	15	21	71	19	27
R17X033	1/2" x 1/2"	45	51	17	25	75	22	30
R17EX037	1/2" x 3/4"E	46	51	17	-	76	22	30

## ➤ Product specifications

### R16TG

Chrome plated angle lockshield, with iron pipe connection or connection for copper, plastic or multilayer pipe adaptor. With self-sealing tail piece. Body, cap, stem and main components: UNI EN 12165 CW617N brass. Gaskets: EPDM. Fluid of use: water and glycol solutions (max. 30 %). Temperature range: 5+110 °C. Max. working pressure: 16 bar.

### R17TG

Chrome plated straight lockshield, with iron pipe connection or connection for copper, plastic or multilayer pipe adaptor. With self-sealing tail piece. Body, cap, stem and main components: UNI EN 12165 CW617N brass. Gaskets: EPDM. Fluid of use: water and glycol solutions (max. 30 %). Temperature range: 5+110 °C. Max. working pressure: 16 bar.

**⚠ Safety Warning.** Installation, commissioning and periodical maintenance of the product must be carried out by qualified operators in compliance with national regulations and/or local standards. A qualified installer must take all required measures, including use of Individual Protection Devices, for his and others' safety. An improper installation may damage people, animals or objects towards which Giacomini S.p.A. may not be held liable.

**♻ Package Disposal.** Carton boxes: paper recycling. Plastic bags and bubble wrap: plastic recycling.

**ℹ Additional information.** For more information, go to [giacomini.com](http://giacomini.com) or contact our technical assistance service. This document provides only general indications. Giacomini S.p.A. may change at any time, without notice and for technical or commercial reasons, the items included herewith. The information included in this technical sheet do not exempt the user from strictly complying with the rules and good practice standards in force.

**♻ Product Disposal.** Do not dispose of product as municipal waste at the end of its life cycle. Dispose of product at a special recycling platform managed by local authorities or at retailers providing this type of service.