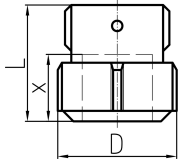


Data sheet

valid from: 11/12/19



Cap, galvanized
for ISO 65 Steel pipe

Dim. (inch)	NBR Part No.	EPDM Part No.	FKM Part No.	SP	GP	weight (kg)	D (mm)	L (mm)	x (mm)
3/8	775 452 050	775 456 050		1	30	0.201	45	48	30 - 34
1/2	775 452 051	775 456 051	775 458 051	1	30	0.207	45	48	30 - 34
3/4	775 452 052	775 456 052	775 458 052	1	30	0.240	51	50	30 - 34
1	775 452 053	775 456 053	775 458 053	1	30	0.347	59	53	30 - 34
1 1/4	775 452 054	775 456 054	775 458 054	1	10	0.450	68	54	30 - 36
1 1/2	775 452 055	775 456 055	775 458 055	1	10	0.520	75	55	32 - 38
2	775 452 056	775 456 056	775 458 056	1	10	0.940	96	60	36 - 42

The technical data are not binding. They neither constitute expressly warranted characteristics nor guaranteed properties nor a guaranteed durability. They are subject to modification. Our General Terms of Sale apply.

Georg Fischer Piping Systems Ltd, Postfach, CH-8201 Schaffhausen/Switzerland

Phone +41 -(0)52-631 1111

e-mail: info.ps@georgfischer.com

Internet: <http://www.gfps.com>