

Washing machine – domestic appliances taps EK SERIES



11/06/2021

Function

Luxor washing machine – domestic appliances taps EK SERIES offer all the quality and guarantee of a Made in Italy product.



Technical data

Maximum working pressure: 10 bar

Maximum working temperature: 90 °C

Materials

Tap body: CW 617 N – DW UNI-EN 12165:2016

Fittings: CW 614 N – DW UNI-EN 12164:2016

Cartridge: CW 614 N – DW UNI-EN 12164:2016 + NBR + Nylon

Gaskets: EPDM; PTFE

Knob: ABS with chromed finish

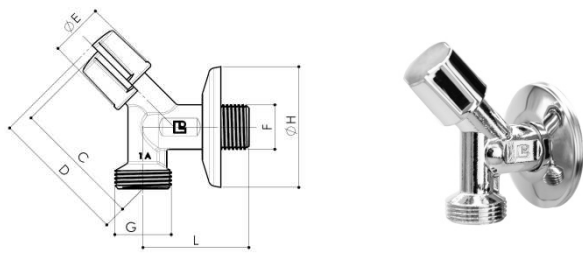
Finish

Chrome-plated finish

Dimensional drawings

S 70 – S 71

Washing machine elbow screw tap with sliding wall cover and 45° handle. Available with or without non-return valve.

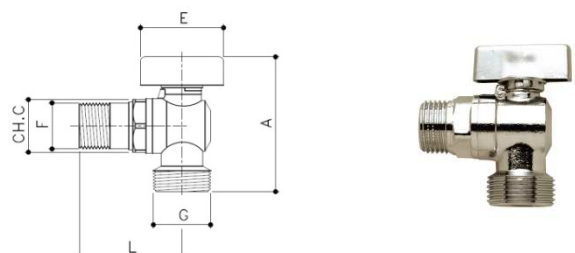


Code	Size	A	B	C	D	E
70352105	M1/2 – M3/4	-	-	60	65	25,6
70352102	M1/2 – M3/4	-	-	60	65	25,6

Code	Size	F	G	H	L	M
70352105	M1/2 – M3/4	G1/2	G3/4	56	49	-
70352102	M1/2 – M3/4	G1/2	G3/4	56	49	-

S 72

Washing machine ball valve tap with butterfly handle.

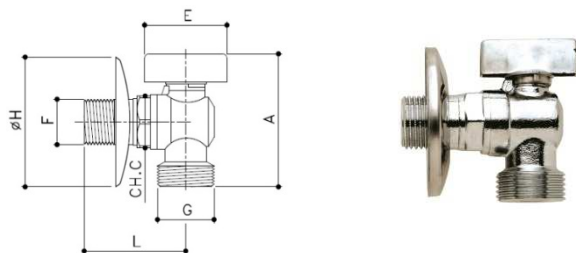


Code	Size	A	B	C	D	E
70292127	M1/2 – M3/4	62	-	22	-	38

Code	Size	F	G	H	L	M
70292127	M1/2 – M3/4	G1/2	G3/4	-	47	-

S 73

Washing machine ball valve tap with butterfly handle and sliding wall cover.

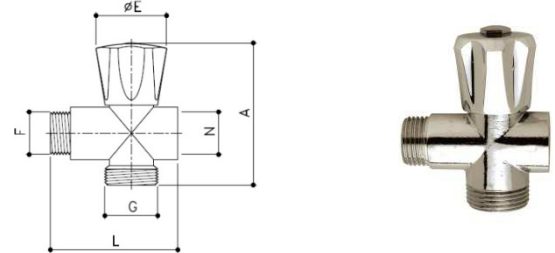


Code	Size	A	B	C	D	E
70302127	M1/2 – M3/4	62	-	22	-	38

Code	Size	F	G	H	L	M
70302127	M1/2 – M3/4	G1/2	G3/4	60	47	-

S 74

Intermediate screw tap with washing machine connection and 6 points handle.

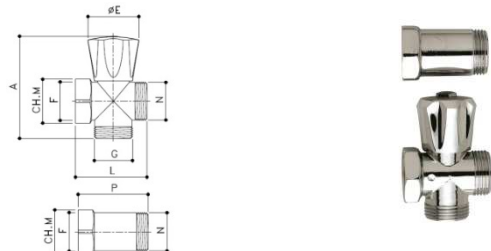


Code	Size	A	E	F
70312100	M1/2 – F1/2 (intermediate) M3/4 (wash machine connection)	70	35	G1/2

Code	Size	G	L	N
70312100	M1/2 – F1/2 (intermediate) M3/4 (wash machine connection)	G3/4	63	G1/2

S 75

Intermediate screw tap for washing machine with 6 points handle and spacer.

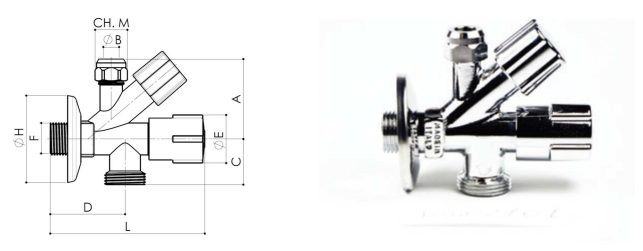


Code	Size	A	B	E	F	G
70370000	G3/4	70	-	35	G3/4	G3/4

Code	Size	H	L	M	N	P
70370000	G3/4	-	49	30	G3/4	48

S 76

Double exit screw tap with washing machine connection, sliding wall cover and 3 pcs cartridge.

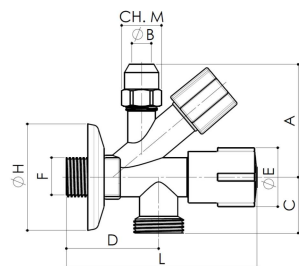


Code	Size	A	B	C	D	E
70402101CC	G3/4 - G3/8 - G1/2	53	10	28	49	31

Code	Size	F	G	H	L	M
70402101CC	G3/4 - G3/8 - G1/2	G1/2	G3/4	56	100	19

S 77

Double exit screw tap with washing machine connection, sliding wall cover and 3 pcs cartridge with high nut.

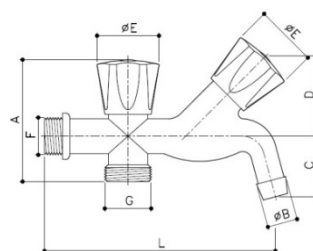


Code	Size	A	B	C	D	E
70402102CC	G3/4 - G3/8 - G1/2	61	10	28	49	31

Code	Size	F	G	H	L	M
70402102CC	G3/4 - G3/8 - G1/2	G1/2	G3/4	56	100	19

S 78

Double exit screw tap with washing machine connection.

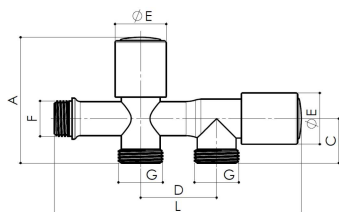


Code	Size	A	B	C	D	E
70162100	M1/2 - M3/4	69	17	34	45	35

Code	Size	F	G	H	L	M
70162100	M1/2 - M3/4	G1/2	G3/4	-	130	-

S 79

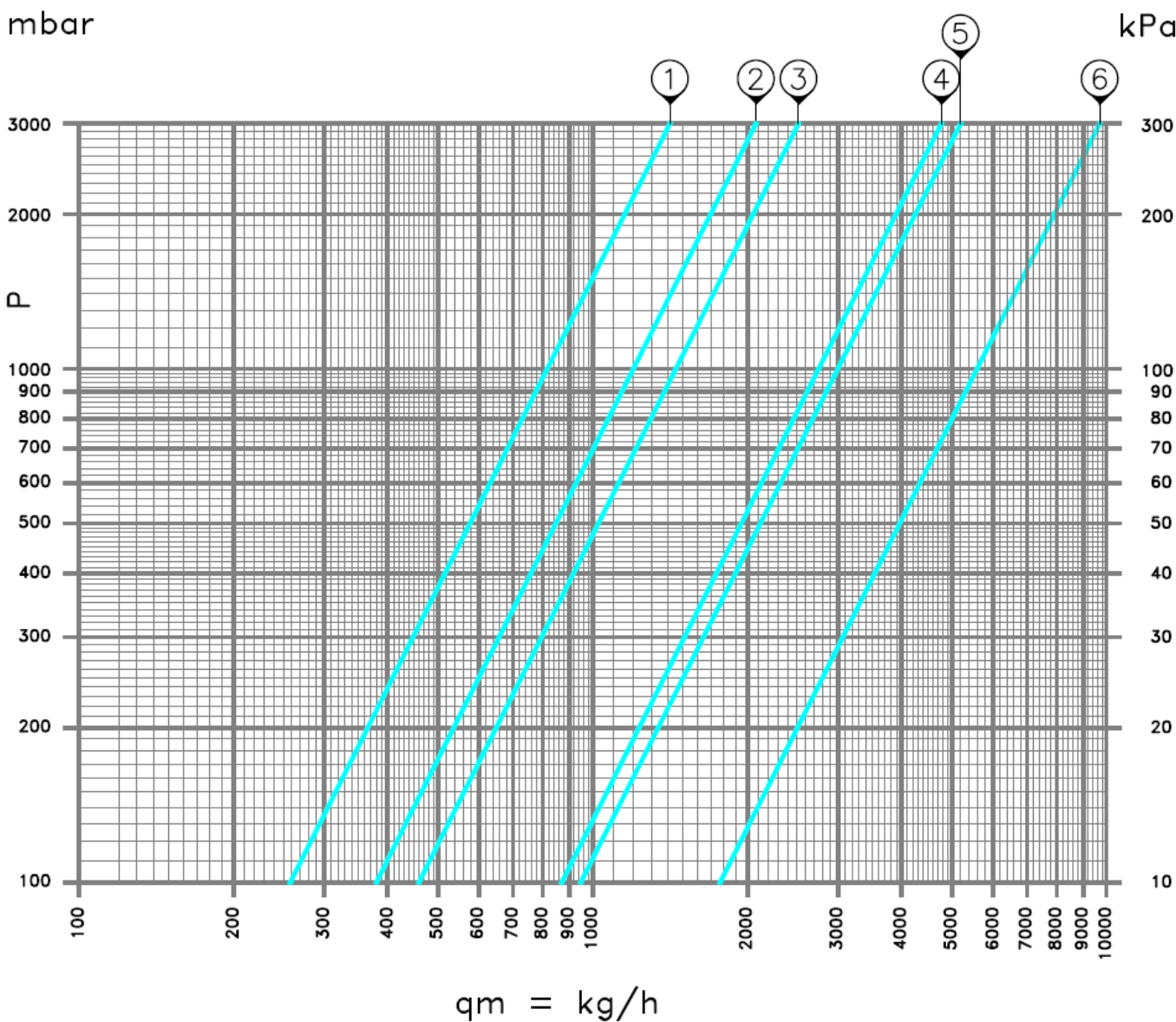
Double exit screw tap with connections for washing machine and dish washer.



Code	Size	A	B	C	D	E
70382100	M1/2 - M3/4 - M3/4	74	-	26	45	30

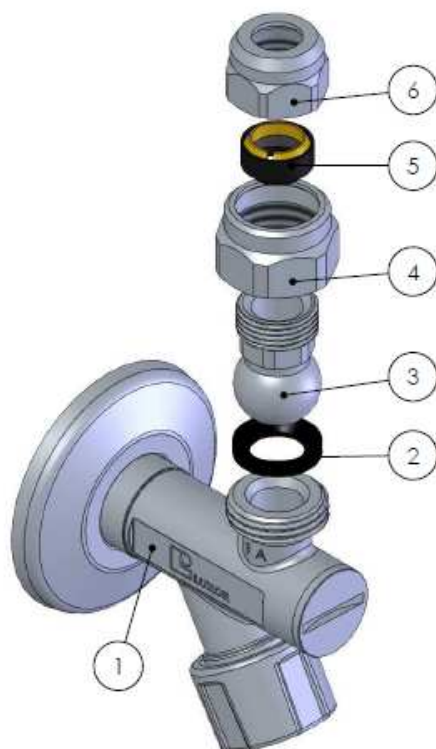
Code	Size	F	G	H	L	M
70382100	M1/2 - M3/4 - M3/4	G1/2	G3/4	-	144	-

Hydraulic characteristics



Curve	Kv	Item
1	0,85	S 70; S 71.
2	1,20	S 76; S 77.
3	1,55	S 72; S 73.
4	2,75	S 74; S 79.
5	3,00	S 78.
6	5,60	S 75.

Assembly instructions



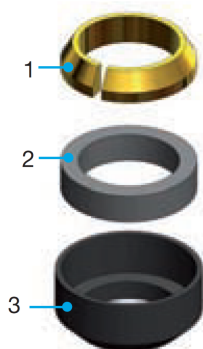
For a correct assembly of the undersink taps please follow the above steps, checking carefully the assembly direction of the cartridge and the gaskets.

It is important first to connect the nipple with wall cover to the water distribution net, then correctly insert the gaskets between the elbow and the nipple, insert the RCC cartridge into the clamping nut paying attention to the assembly direction and finally tighten the fitting to the pipe.

Warning:

- **Check the correct direction of the cartridge;**
- **Suggested tightening torque: from 25 to 30 Nm max.**

RCC cartridge



- 1. Tightening washer made of brass CW 614 N-DW UNI-EN 12164:2016**
The brass washer has high mechanical qualities thanks to the annealing process which improves the malleability of the material, ensuring the correct coupling between the fitting and the pipe without applying an excessive clamping force.
- 2. Internal gasket made of NBR**
Range of use for temperature up to 90°C: NBR gaskets have good mechanical qualities, low permanent deformation and low gas permeability.
- 3. External cartridge made of Nylon (Polyamide 6.6)**
Range of use for temperature up to 90°C: the Nylon cartridge has good mechanical qualities, high tightness and shock resistance.

The RCC cartridge is the most safe and functional solution for the connection of the undersink taps to the final utilities. Being composed of three parts gathered into one single body, the RCC cartridge is the final solution to the installation problems of the compression fittings. No more parts lost or wrongly assembled, but one single piece which ensures an excellent mechanical and hydraulic tightness.



Luxor S.p.A.

Sede amministrativa, stabilimento e uffici commerciali:

Administrative office, factory and commercial office:

Tel.: 030-9961161 – Fax: 030-9961165

info@luxor.it – www.luxor.it

via Madonnina, 94 – 25018 Montichiari - (BS) Italy

*Luxor si riserva il diritto di apportare miglioramenti e modifiche ai prodotti descritti ed ai relativi dati tecnici in qualsiasi momento e senza preavviso -
Luxor reserves the right to ameliorate and modify the above products and their technical data at any time and without notice*