

# Installation Manual

## Double End Input LED Tube:

### 1. For New Luminaires

Work by qualified electricians only.

Wiring circuit diagram same as follow



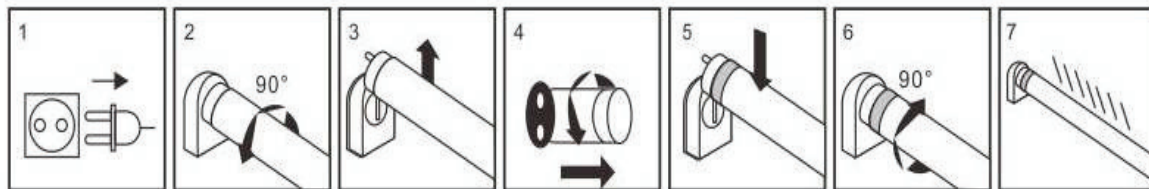
### 2. Retrofitting in a Magnetic Ballast T8 Fluorescent Luminaires

Make sure that the power supply is disconnected

Remove the conventional lamp

Remove the starter

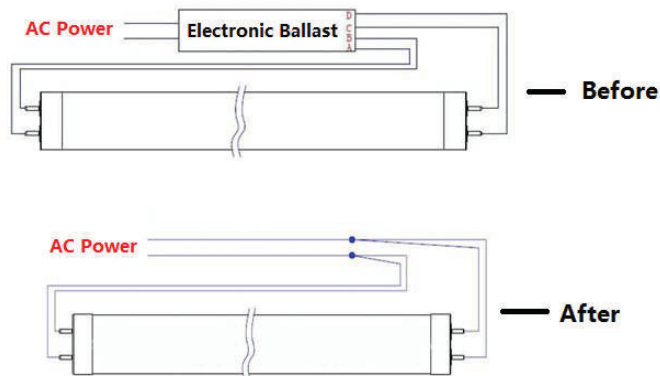
Inset LED tube into lamp holder, and check the light distribution angle



### 3. Retrofitting in a Electronic Ballast T8 Fluorescent Luminaires

Work by qualified electricians only.

Remove the electronic ballast and rewiring as follow



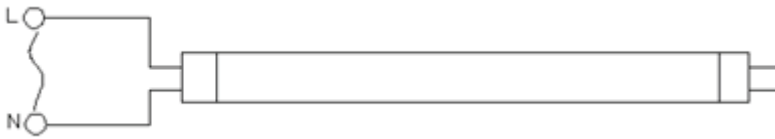
# Installation Manual

## Single End Input LED Tube:

### 1. For New Luminaires

Work by qualified electricians only.

Wiring circuit diagram same as follow



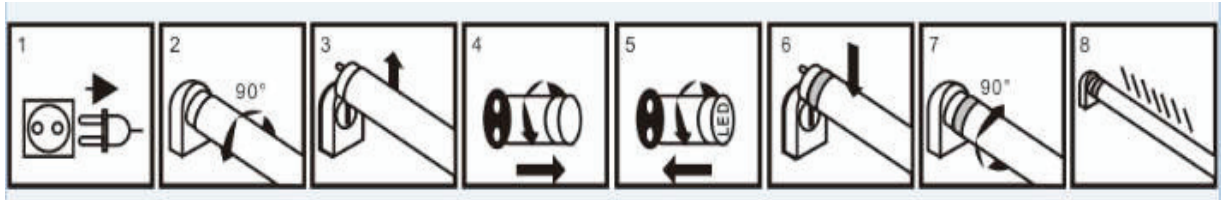
### 2. Retrofitting in a Magnetic Ballast T8 Fluorescent Luminaires

Make sure that the power supply is disconnected

Remove the conventional lamp

Replace the old starter with LED starter

Inset LED tube into lamp holder, and check the light distribution angle



### 3. Retrofitting in a Electronic Ballast T8 Fluorescent Luminaires

Work by qualified electricians only.

Remove the electronic ballast and rewiring as follow

