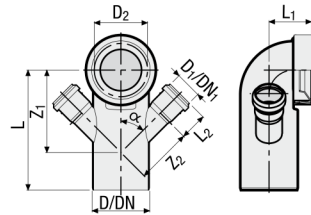


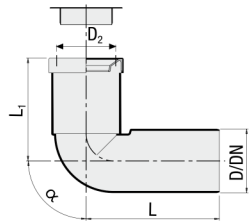
White WC bend with 4 inlets 110/40

COD.	D/D ₁	DN/DN ₁	α	D ₂	Z ₁	Z ₂	L	L ₁	L ₂	kg				HxLxP
VS0541001	110/40	100/40	45°	102±5	180	120	312	185.5	50	0.500	5	20	40	940x800x1200



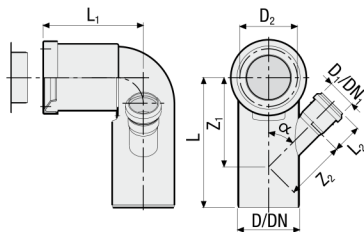
White WC bend with 2 inlets, seal and cap

COD.	D/D ₁	DN/DN ₁	α	D ₂	Z ₁	Z ₂	L	L ₁	L ₂	kg				HxLxP
VS0542001	110/40	100/40	45°	102±5	171	120	230	82	50	0.420	10	40	80	940x800x1200
VS0542003	110/50	100/50	45°	102±5	186	125	235	82	52	0.430	10	40	80	940x800x1200



Extended white WC bend with seal and cap

COD.	D/D ₁	DN/DN ₁	α	D ₂	L	L ₁	kg				HxLxP
VS0543001	110	100	90°	102±5	230	180	0.450	10	40	80	940x800x1200
VS0599241	90	90	90°	102±5	230	176	0.380	15	60	120	940x800x1200



Extended white WC bend with left inlet, seal and cap

COD.	D/D ₁	DN/DN ₁	α	D ₂	Z ₁	Z ₂	L	L ₁	L ₂	kg				HxLxP
VS0545001	110/40	100/40	45°	102±5	168	120	230	180	50	0.480	15	60	120	1300x800x1200
VS0545003	110/50	100/50	45°	102±5	175	119	230	180	52	0.480	15	60	120	1300x800x1200