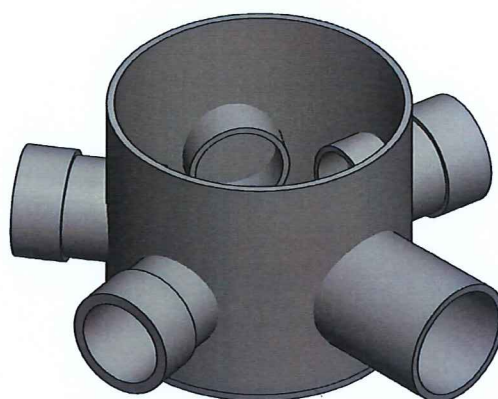


MODEL: PP floor gully

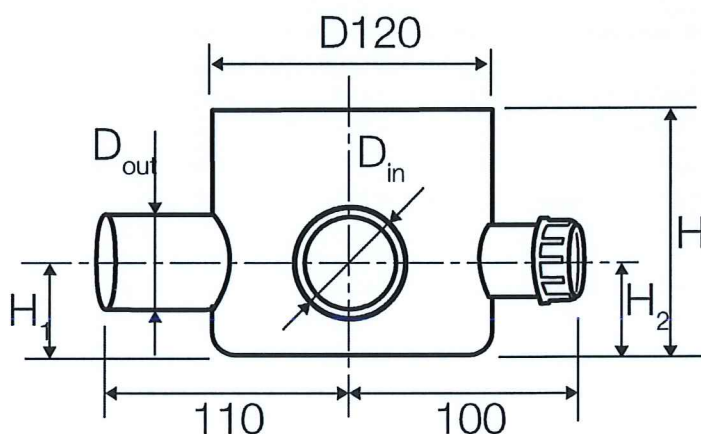
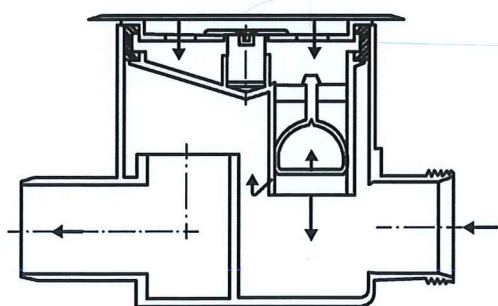
Inspectable trapped gully in polypropylene made up of four 40 mm inlets and either a 50 mm or 75 mm outlet depending on the version. The gully includes a top protective cap, 2 blank caps, 4 ring nuts and 4 conic seals for inlet connections.

Charateristics

| | |
|--------------------|------------------------|
| Code: | VS0701011 VS0701015 |
| Minimum height: | 115 mm |
| Inlet diameter: | 3 x 40 mm |
| Outlet diameter: | 50 mm |
| Raw material: | Polypropylene (PP) |
| Grid raw material: | Stainless steel |
| Flow rate: | 0.55 l/s |



Technical specs:



Approvals:

The approvals of Valsir® traps systems are available on the website: www.valsir.com