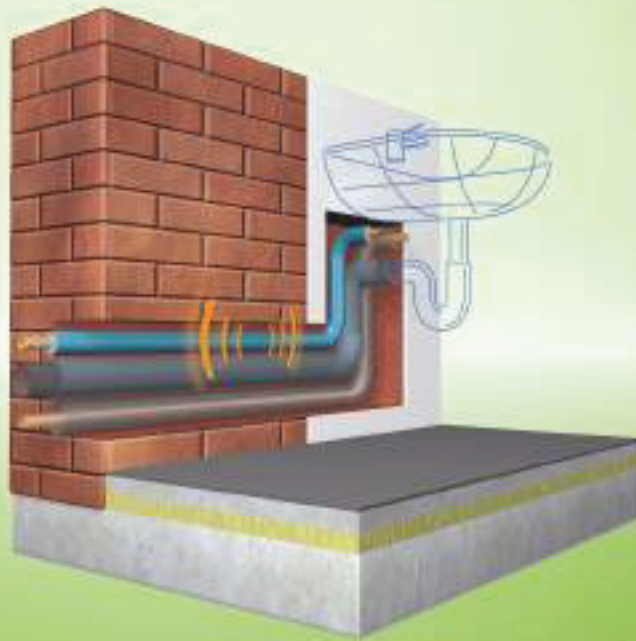


Tubolit® S Plus

THE PROTECTION TUBE FOR
INSTALLATIONS WITH LIMITED SPACE



- Maximum pipe protection against aggressive building materials
- Optimized insulation thickness for installations with limited space
- Fast & easy sleeving due to extra inner foil
- Structure borne sound

Technical Data - Tubolit S Plus

Brief description	Flexible, closed-cell extruded insulation material to reduce heat losses and noise on heating and plumbing installations.
Material type	Foam material based on polyethylene. Factory made polyethylene foam (PEF) according to EN 14313.
Colour	foam: grey; foil: blue
Applications	Insulation / protection of pipes (heating system pipes, domestic hot and cold water pipes) and other parts of heating and plumbing installations (incl. elbows, fittings, flanges, etc).
Special Features	Foil coating on outer surface for for additional protection of insulation surface. Foil coating on inner surface for better sleeve-on installation.
Remarks	After installation linear shrinkage of approx. 2% (or more in particular cases) may occur during the initial and even later phase of system operation. Under certain conditions (e.g. high humidity, main distribution pipes, pipes with constant or almost constant flow) cold water pipelines must be insulated with Armaflex, just the same as chilled water pipes in air-conditioning systems. EC Certificate of Constancy of Performance no. 0550 and 0551 of Güteschutzgemeinschaft Hartschaum (GSH) e.V. , Celle

Property	Value/Assessment	Test ^{*1}	Super- vision ^{*2}	Special Remark
Temperature Range				
Temperature Range	max. service temperature + 100 °C (+ 85 °C for tapes) min. service temperature (as is usual in plumbing and heating installations)	EU 5676	o/●	Tested acc. to EN 14707 and EN 14313
Thermal Conductivity				
Thermal Conductivity ¹	ϑ_m 40 [°C] $\lambda =$	EU 5676	o/●	Declared acc. to EN ISO 13787 Tested acc. to EN ISO 8497
	Tubolit S Plus $\lambda \leq 0,045$ W/(m · K) $[41 + 0,1 \cdot \vartheta_m + 0,0008 \cdot (\vartheta_m - 40)^2] / 1000$			
Fire performance				
Reaction to fire ²	Tubolit S Plus E	EU 5676	o/●	Classified acc. to EN 13501-1 Tested acc. to EN ISO 11925-2
Other technical features				
Dimensions and tolerances	In accordance with EN 14313, table 1 and 2	EU 5676	o/●	Tested acc. to EN 822 EN 823 EN 13467

1. Due to testing method and laboratory equipment, thermal conductivity is measured for Tubolit DG, S and DHS in a regular way

2. The reaction to fire classification is valid on metal surfaces.

*1 Further documents such as test certificates, approvals and the like can be requested using the registration number given.

*2 ●: Official supervision by independent institutes and /or test authorities
o: Own in-factory quality monitoring

All data and technical information are based on results achieved under typical application conditions. Recipients of this information should, in their own interest and responsibility, clarify with us in due time whether or not the data and information apply to the intended application area. Installation instructions are available. Please consult our Customer Service Center before insulating stainless steels.

Tubolit S Plus tubes endless



Length 20,0 m, Color grey, Covering Color blue, with robust protective foil on outside plus transparent inner foil for fast and easy application

Pipe max. Outside-Ø [mm]	4,0 mm insulation thickness			
	Code	m/carton	Rolls/carton	€/m
15	TL-12-15/4-S+	520	26	xxx
18	TL-18/4-S+	440	22	xxx
20	TL-20/4-S+	440	22	xxx
22	TL-22/4-S+	400	20	xxx
25	TL-24/4-S+	400	20	xxx
28	TL-28/4-S+	320	16	xxx
30	TL-30/4-S+	320	16	xxx
35	TL-35/4-S+	280	14	xxx
42	TL-42/4-S+ ●	240	12	xxx

● Item not on stock. Delivery on request. [MTO]

