

Customer : ROMSTAL IMEX SRL

Date : 2022-05-31

TECHINAL INSTRUCTION

Supplier Name & Trade Mark

Meide Group

Product

Steel pipe nipple, DIN 10241

Material

Steel pipe nipple, EN 10255, BS 1387

Threads

In accordance with ISO 7-1

Descriptions

Product code	Description	Size	Color
72650051	STUT NEGRU TIP M, 1 1/2x150mm BLK HALF NIPPLES 11/2X150MM	11/2X150MM	Black
72650042	STUT NEGRU TIP M, 1 1/4x150mm BLK HALF NIPPLES 11/4X150MM	11/4X150MM	Black



Chemical Analysis

C%	Mn%	S%	P%
≤0.25%	≤1.4%	<0.045%	<0.045%

Mechanical properties

Tensile Strength	Elongation
≥320MPa	>20%

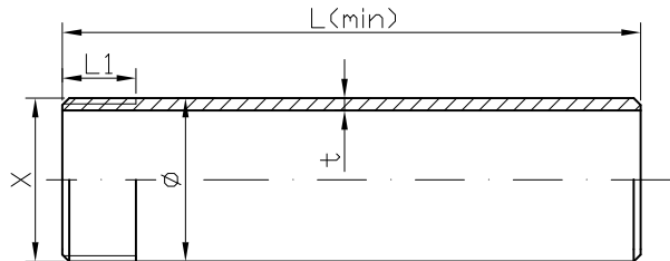
Application Condition

地址：中国济南市平阴县工业园区玫德玛钢科技园 250400 电话(Tel): 008653187879384

ADDRESS: Jinan Meide Technopark, Industrial Park, Pingyin, Jinan, China 250400 传真(Fax): 008653187879387

Product	Working temperature	Working pressure
nipples	-29°C--107°C	175psi--300psi

Dimensions



SIZE	X	∅	L(min)	L1+2.3	t
BNH 11/4X150MM	R11/4	42.4	150	19.1	3.2
BNH 11/2X150MM	R11/2	48.3	150	19.1	3.2

Marking

The parts are marked according to customer requirements on labels.

Visual Inspection

The parts are controlled visually 100%.

NOTE

We have the following quality system and product certificate.

-ISO-9001:2015

-ISO-14001:2015

