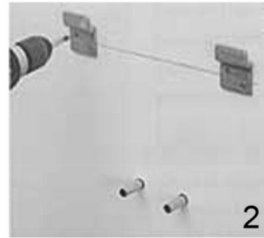


## Wall hang Basin Instruction

The expert practical advice contained in this leaflet assists you in carrying out your home improvement projects both safely and successfully.



Use the torpedo level to get the most accurate positioning of the location and mark it with a pencil.



Screw the supply bracket used for mounting the sink at the correct position.



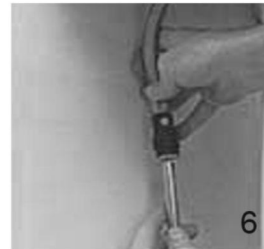
Attach the faucet to the basin and connect the water supply hoses to the faucet .



Hang the sink on the bracket to mount it onto the wall. Place the torpedo level on the front lip of the sink to make sure that the sink is level.



Hang the sink on the bracket to mount it onto the wall. Place the torpedo level on the front lip of the sink to make sure that the sink is level.



Connect the water supply hoses to the water supply stop handles on the wall using the crescent wrench. Do not turn the water supply handles on until the drain has been connected.



Make the Pop-Up waste connect the P-Trap by all of the plastic and rubber washers. Fit the trap to the basin waste.



Once you have done all your tiling and flooring, you can seal where the basin is in contact with the wall. Check all of the parts correctly and finish the installation.