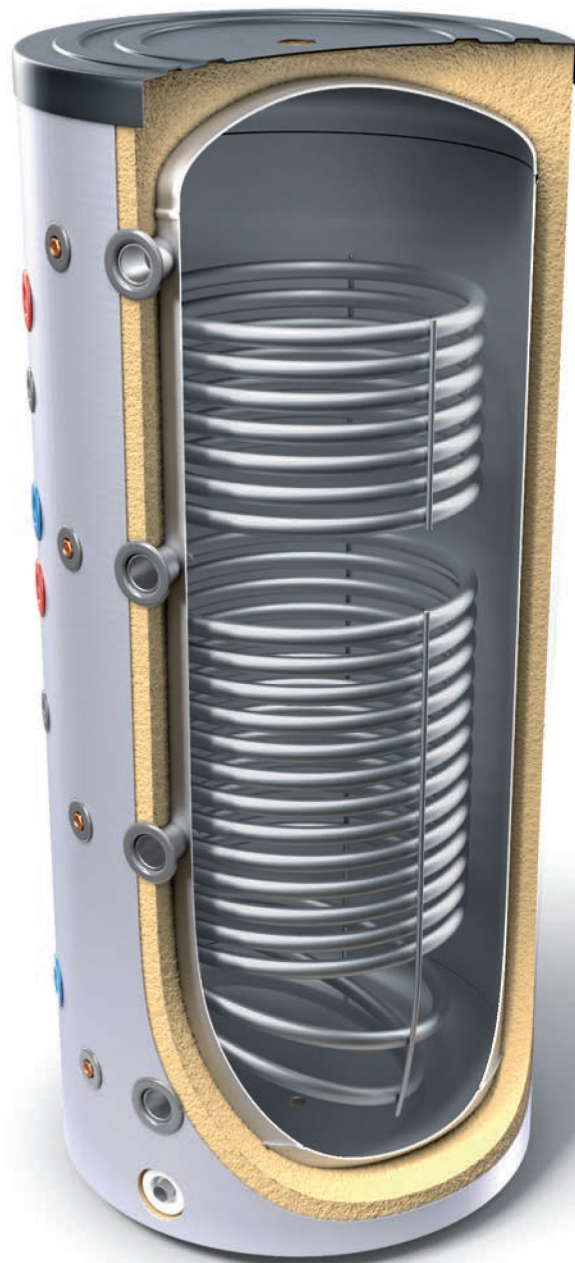


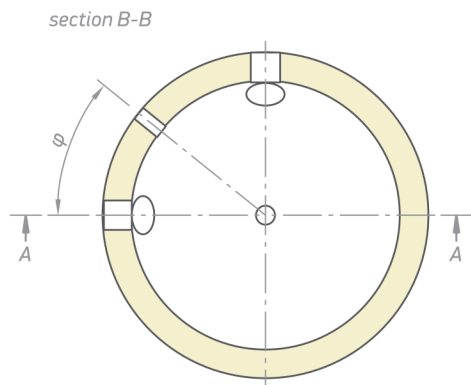
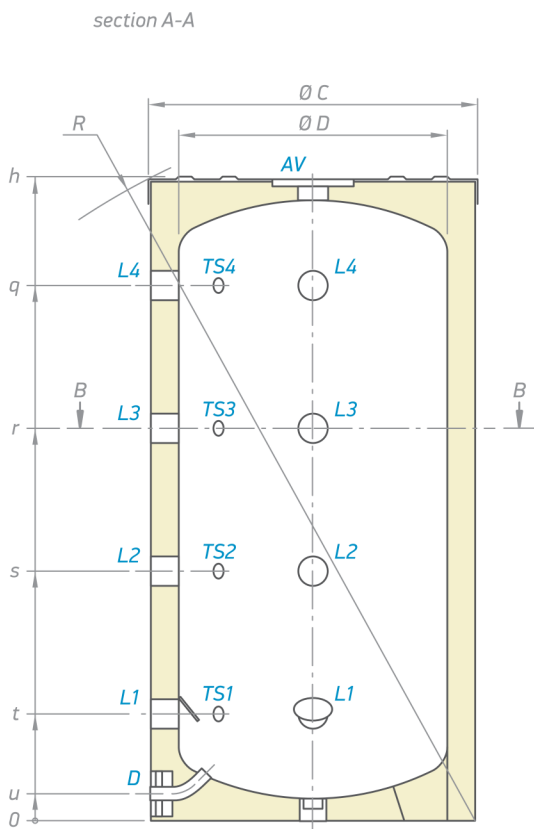
Combined and indirectly heated storage tanks

Buffer tanks for heating systems



MODEL		V 200 60 F40 P4	V 300 65 F41 P4	V 400 75 F42 P4	V 500 75 F42 P4
Art. number	N°	300632	300634	300635	300636
Capacity	L	200	300	400	500
Net weight	kg	40	59	113.5	121
Insulation (rigid PU)	mm	50	50	50	50
Heat losses ΔT 45K	kWh/24h	1.4	1.7	2.2	2.3
Energy efficiency class		B	B	C	C
Maximum operational temperature	°C	95	95	95	95
Rated pressure	bar	3	3	3	3
Number of inlets	pieces	4	4	4	4
Number of outlets	pieces	5	5	5	5
Thermo pockets	pieces	4	4	4	4

Dimensions ± 5 mm					
h	mm	1200	1420	1410	1674
q	mm	993	1208	1165	1451
r	mm	728	873	849	1039
s	mm	463	538	533	627
t	mm	198	203	217	215
u	mm	50	52	67	67
R	mm	1345	1563	1590	1823
$\varnothing D$	mm	500	550	650	650
$\varnothing C$	mm	600	650	750	750
φ	°	45	45	22.5	22.5



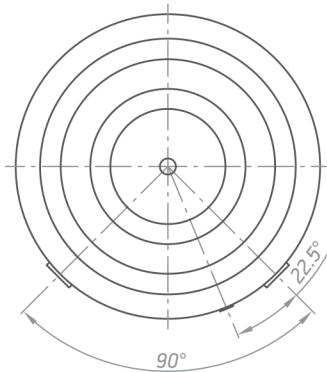
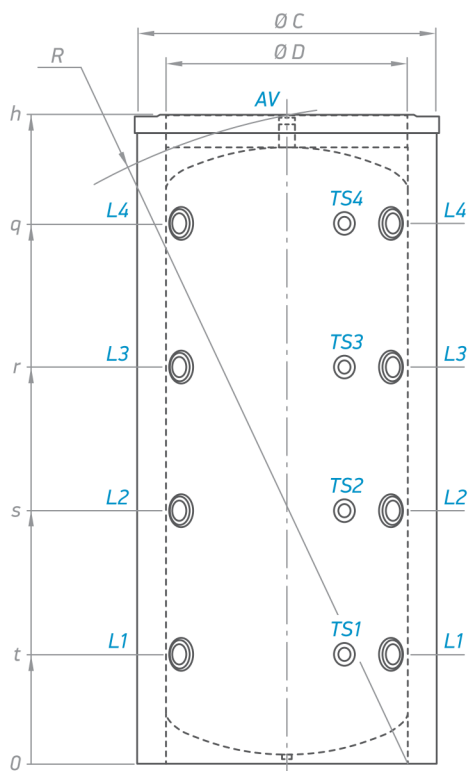
V 200 60 F40 P4
V 300 65 F41 P4
V 400 75 F42 P4
V 500 75 F42 P4

L1	- level 1	G 1½"
L2	- level 2	G 1½"
L3	- level 3	G 1½"
L4	- level 4	G 1½"
D	- drainage	G ¾"
AV	- air vent	G 1½"
TS1	- thermo pocket level 1	G ½"
TS2	- thermo pocket level 2	G ½"
TS3	- thermo pocket level 3	G ½"
TS4	- thermo pocket level 4	G ½"

Thread designations according to EN ISO 228-1!

MODEL		V 800 95 F43 P4 C	V 1000 95 C	V 1500 120 F45 P4 C	V 2000 130 F46 P4 C
Art. number	Nº	303896	303897	303893	303894
Capacity	L	800	949	1500	2000
Net weight	kg	115	145	210	284
Insulation	mm	80	80	100	100
Heat losses ΔT 45K	kWh/24h	3.1	3.4	3.8	4.4
Energy efficiency class		C	C	C	C
Maximum operational temperature	°C	95	95	95	95
Rated pressure	bar	3	3	3	3
Thermo pockets	pieces	4	4	4	4
Number of inlets	pieces	4	4	4	4
Number of outlets	pieces	5	5	5	5

Dimensions ±5 mm					
h	mm	1947	2132	2220	2413
q	mm	1500	1774	1726	1896
r	mm	1120	1303	1293	1412
s	mm	740	832	860	929
t	mm	360	360	427	446
R	mm	1960	2155	2265	2481
Ø C	mm	950	950	1200	1300
Ø D	mm	790	790	1000	1100



V 800 95 F43 P4 C
V 1000 95 C
V 1500 120 F45 P4 C
V 2000 130 F46 P4 C

L1	- level 1	G 1½"	G 2" B
L2	- level 2	G 1½"	G 2" B
L3	- level 3	G 1½"	G 2" B
L4	- level 4	G 1½"	G 2" B
AV	- air vent	G 1½"	G 2" B
TS1	- thermo pocket level 1	G ½"	G ½"
TS2	- thermo pocket level 2	G ½"	G ½"
TS3	- thermo pocket level 3	G ½"	G ½"
TS4	- thermo pocket level 4	G ½"	G ½"

Thread designations according to EN ISO 228-1!