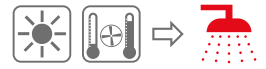


BOLLY® 2 PDC

POLYWARM® COATED TANK FOR DHW ACCUMULATION SPECIFIC FOR COMBINATION WITH HEAT PUMP AND WITH 1 FIXED HEAT EXCHANGER FOR INTEGRATION OF A SECOND SOURCE



APPLICATION

Production and storage of domestic hot water (DHW). All the connections are aligned on the front and on the back for quick and easy installation.

MATERIAL

Mild steel Polywarm® coated (Attestation ACS - SSICA - EN 16421 - WRAS)

EXCHANGE MODULE

Counter-flow heat exchanger system with heat load from the top

INTEGRATIVE HEAT EXCHANGER

N° 1 Mild steel Polywarm® coated heat exchanger.

INSULATION

HARD: High thermal insulation with ecological polyurethane hard foam. HARD FOAM (CLASS "A" MODELS): rigid polyurethane foam for high thermal insulation with a vacuum sheet of highly insulating material. Grey PVC external lining.

CATHODE PROTECTION

Magnesium anode.

DRAIN

External confluence through drain connection

GASKET- FLANGE PLATE

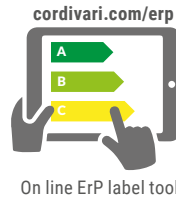
Silicone gaskets suitable for water intended for human consumption (tested according to 98/83/CE); Inspection flange.

WARRANTY

5 years (tank). See general sales conditions and warranty for electrical parts.

ACCESSORIES AND SPARE PARTS

See Accessories section for the entire list.



BOLLY® 2 PDC WB

Model	HARD FOAM INSULATION Art. Nr.	Heat pump max output [kW]	HEAT EXCHANGER SURFACE [m²]	ENERGY EFFICIENCY CLASS
				ErP
300	3134162320016	15	1,2	B
500	3134162320017	22	1,8	C
800	3134162320018	26	2,7	B



BOLLY® 2 PDC WB CLASS A

Model	HARD FOAM INSULATION Art. Nr.	Heat pump max output [kW]	HEAT EXCHANGER SURFACE [m²]	ENERGY EFFICIENCY CLASS
				ErP
300	3134162320021	15	1,2	A
500	3134162320022	22	1,8	A

ACCESSORIES

Thermometer

Art. Nr.	
5032240000107	
5 units box	



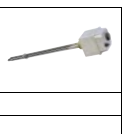
Titanium electronic anode

Art. Nr.	Model
5200000000008	300
5200000000009	500
5200000000011	800



Electric immersion heater

Art. Nr.	Output [kW]
5240000000051	1,5
5240000000052	2
5240000000053	3



HEAT MANAGER kit + electric resistance with probe and 3m cable

Art. Nr.	ELECTRICAL RESISTANCE
5240000000074	1,5 kW
5240000000075	2 kW
5240000000076	3 kW



BOLLY® 2 PDC

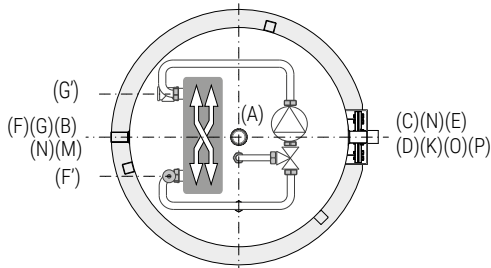
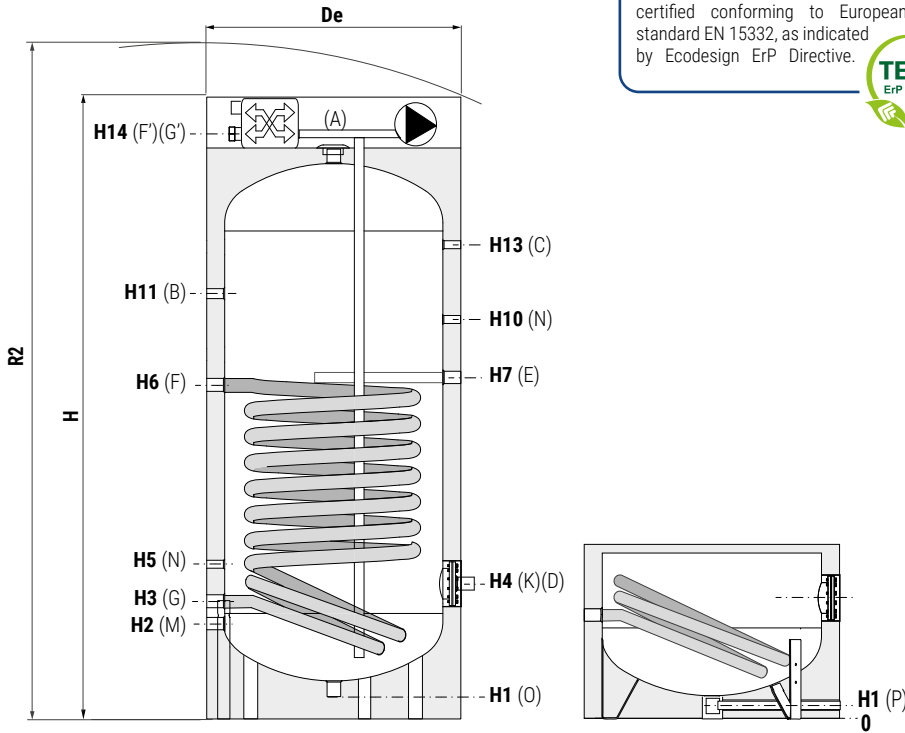
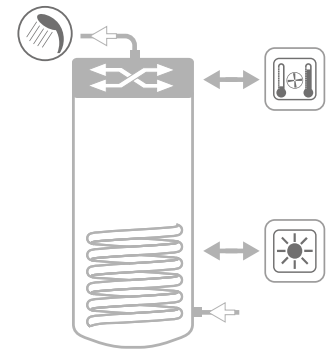
POLYWARM® COATED TANK FOR DHW ACCUMULATION SPECIFIC FOR COMBINATION WITH HEAT PUMP AND WITH 1 FIXED HEAT EXCHANGER FOR INTEGRATION OF A SECOND SOURCE

STORAGE		EXCHANGE MODULE		FIXED HEAT EXCHANGER	
Pmax	Tmax	Pmax	Tmax	Pmax	Tmax
10 bar	90 °C	10 bar	110 °C	12 bar	110 °C



CORDIVARI Lab

TÜV Rheinland Energie und Umwelt GmbH states that test procedures and Cordivari LAB are certified conforming to European standard EN 15332, as indicated by Ecodesign ErP Directive.



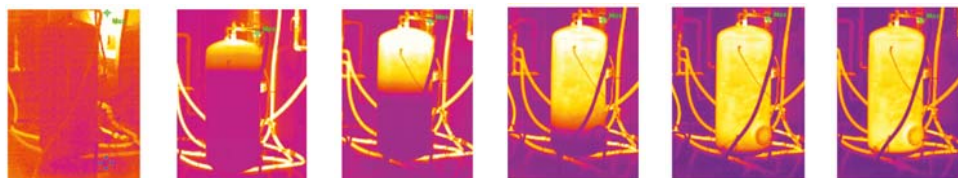
- A** Domestic hot water outlet 1"1/4 G F
- B** Recirculation 1" G F
- C** Connection for thermometer 1/2" G F
- D** Connection for electric immersion heater
- E** Connection for magnesium anode 1"1/4 G F
- F** Primary circuit inlet
- G** Primary circuit outlet
- F'** Heat pump primary circuit inlet
- G'** Heat pump primary circuit outlet
- K** Flange for inspection
- M** Domestic cold water circuit inlet 1" G F
- N** Connection for instrumentation 1/2" G F
- O** Drain
- P** Drain (Only for models > 500)

CALORIFIERS FOR HEAT PUMPS

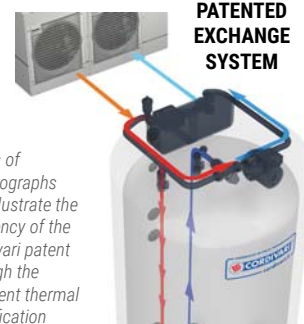
Model	Volume [lt]	De	H	R2	H1	H2	H3	H4	H5	H6	H7	H8
300	291	650	1680	1810	71	241	311	381	431	832	871	//
500	497	750	1970	2115	71	266	346	411	466	1036	1076	//
800	789	900	2360	2530	101	338	428	483	548	1181	1243	//

Model	H9	H10	H11	H12	H13	H14	O-P	K	D	F-G	F'-G'
300	//	991	1101	//	1221	1522	1"1/4	Øi120Øe180	1"1/2	1"1/4	1"
500	//	1196	1331	//	1476	1812	1"1/4	Øi120Øe180	1"1/2	1"1/4	1"
800	//	1573	1598	//	1788	2196	3/4"	Øi120Øe180	2"	1"1/4	1"

- -30% reduction of the D.H.W. production time for major comfort
- 70lt of DHW (45 °C) in only 15 min, with the possibility of heating only the necessary volume of water
- More time for the heat pump to be dedicated to heating or cooling
- Energy focused where needed: all the energy produced with the heat pump concentrated in the upper part of the tank.



Series of thermographs that illustrate the efficiency of the Cordivari patent through the excellent thermal stratification



PATENTED EXCHANGE SYSTEM