

PRODUCT CATEGORY	WATER HEATER	LAST UPDATE	24/01/2024
------------------	--------------	-------------	------------

REFERENCE	DESCRIPTION	POSITION	OUTPUT	VOLTAGE	FREQUENCY	EAN 13	SAP CODE
831251	APE OPRO+ S WM 030 1200M PE	WM	1200	220-240	50-60 HZ	3410538312518	100083125100
841349	APE OPRO+ S 050 WM 1500M PE	WM	1500	220-240	50-60 HZ	3410538413490	100084134900
851395	APE OPRO+ S 080 WM 1500M PE	WM	1500	220-240	50-60 HZ	3410538513953	100085139500
861365	APE OPRO+ S 100 WM 1500M PE	WM	1500	220-240	50-60 HZ	3410538613653	100086136500
861387	APE OPRO+ S WM 120 1500M PE	WM	1500	220-240	50-60 HZ	3410538613875	100086138700
843053	APE OPRO+ S HM 050 1500M PE	HM	1500	220-240	50-60 HZ	3410538430533	100084305300
853081	APE OPRO+ S HM 080 1500M PE	HM	1500	220-240	50-60 HZ	3410538530813	100085308100
863086	APE OPRO+ S HM 100 1500M PE	HM	1500	220-240	50-60 HZ	3410538630865	100086308600

KEY SELLING POINTS & PRODUCTS ADVANTAGES

Anti-corrosive system for increased tank protection



Diamond quality enamel tank



Heating light indicator and temperature control knob



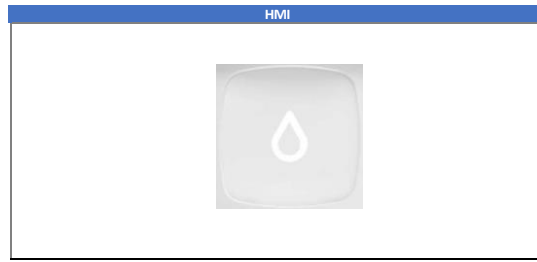
+50% lifetime thanks to exclusive anti-corrosive protection

	GENERAL SPECIFICATION
HEATING ELEMENT	DRY
HEATING ELEMENT MATERIAL	COPPER
TANK PROTECTION 1	MAGNESIUM ANODE
TANK PROTECTION 2	NO
TANK MATERIAL	ENAMELED STEEL
EXTERNAL MATERIAL	PAINTED STEEL
INSTALLATION TYPE	WM / HZ
PRODUCT MAIN COLOR	WHITE
TOP COLOR	WHITE
BOTTOM COLOR	WHITE
HMI COLOR	N/A
TYPE OF INTERFACE	N/A
THERMOSTAT	ROD THERMOSTAT
SAFETY VALVE	8 BAR
DIELECTRIC UNION	PLASTIC x1
THERMOMETER	YES

PRODUCT

- High quality enamel
- High density insulated foam (free of CFC)
- Copper heating element & thermostat sleeve
- Rod thermostat with eco position for WM models
- Magnesium anode
- Optimized stainless steel outlet pipe
- Optimized inlet diffuser

	FUNCTIONS
ON / OFF SWITCH	NO
POWER INDICATOR	NO
HEATING INDICATOR	YES
SHOWER READY INDICATOR	NO
TEMPERATURE SETTING	NO
TEMPERATURE DISPLAY	NO
MANUAL MODE	NO
SMART/ECO+ MODE	NO
ABSENCE MODE	NO
MAX MODE	NO
BOOST MODE	NO
CONNECTIVITY	NO
ERROR INDICATOR	NO



INSTRUCTION BOOK

UNIVERSAL BOOKLET

... TRANSLATED INTO :

19 languages

EN / FR / ES / PT / IT / NL / PL / HU / BG / ET / RU / CS / HR / SQ / RO / LT / SL / LV / AR

BRAND STICKER

Atlantic

ELECTRIC SUPPLY

CABLE	YES	CABLE	
ELCB	YES	PLUG	E / F

KNOB

Bottom

THERMOMETER

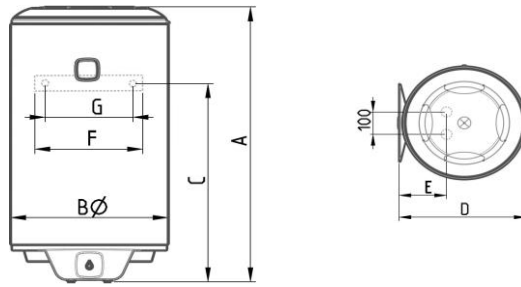
Square

QUICK START

On the packing flap

TECHNOLOGY STICKER

INSTALLATION DIMENSIONS



REFERENCE	DESCRIPTION	POSITION	CAPACITY (L)	OUTPUT (W)	VOLTAGE (V)	DIMENSIONS (MM)							NET WEIGHT (KG)
						A	B	C	D	E	F	G	
831251	APE OPRO+ S WM 030 1200M PE	WM	30	1200	220-240	443	433	261	450	158	300	240	11.6
841349	APE OPRO+ S 050 WM 1500M PE	WM	50	1500	220-240	607	433	395	450	158	300	240	15.2
851395	APE OPRO+ S 080 WM 1500M PE	WM	75	1500	220-240	806	433	605	450	158	300	240	19.7
861365	APE OPRO+ S 100 WM 1500M PE	WM	100	1500	220-240	1008	433	747	450	158	300	240	23.5
861387	APE OPRO+ S WM 120 1500M PE	WM	115	1500	220-240	1139	433	930	450	158	300	240	28.4
843053	APE OPRO+ S HM 050 1500M PE	HM	50	1500	220-240	607	433	395	450	158	300	240	15.2
853081	APE OPRO+ S HM 080 1500M PE	HM	75	1500	220-240	806	433	605	450	158	300	240	19.7
863086	APE OPRO+ S HM 100 1500M PE	HM	115	1500	220-240	1008	433	747	450	158	300	240	23.5

*real capacity

REFERENCE	DESCRIPTION	PROFIL	V40 (L)	HEAT UP TIME FROM 15° TO 65°	QPR (kWh/24h)	ENERGY CLASS
831251	APE OPRO+ S WM 030 1200M PE	S	50.6		TBC	C
841349	APE OPRO+ S 050 WM 1500M PE	M	81		TBC	C
851395	APE OPRO+ S 080 WM 1500M PE	M	124		TBC	C
861365	APE OPRO+ S 100 WM 1500M PE	L	174		TBC	C
861387	APE OPRO+ S WM 120 1500M PE	L			TBC	C
843053	APE OPRO+ S HM 050 1500M PE	M	74		TBC	C
853081	APE OPRO+ S HM 080 1500M PE	M	114		TBC	C
863086	APE OPRO+ S HM 100 1500M PE	L	155		TBC	C

REFERENCE	DESCRIPTION	PACKED DIMENSIONS (LxWxH) [MM]	GROSS WEIGHT (KG)	NUMBER OF PIECES PER CONTENER
831251	APE OPRO+ S WM 030 1200M PE	480x460x990	13.2	600
841349	APE OPRO+ S 050 WM 1500M PE	480x460x650	16.7	480
851395	APE OPRO+ S 080 WM 1500M PE	480x460x855	21.5	360
861365	APE OPRO+ S 100 WM 1500M PE	480x460x1060	25.3	295
861387	APE OPRO+ S WM 120 1500M PE	480x460xTBC	30	
843053	APE OPRO+ S HM 050 1500M PE	480x460x650	16.7	480
853081	APE OPRO+ S HM 080 1500M PE	480x460x855	21.5	360
863086	APE OPRO+ S HM 100 1500M PE	480x460x1060	25.3	295

INCLUDED ACCESSORIES 1

Safety valve

INCLUDED ACCESSORIES 2

Plastic dielectric x2

COMPATIBLE ACCESSORIES

IP RATING	SAFETY

PACKAGING

STANDARDS