

MV 120 J MV 150 VJ Series



Modifications

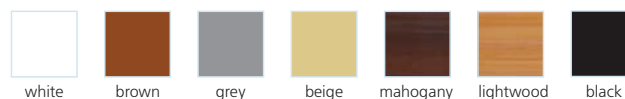
Application

- Decoration of supply and exhaust vents of public, residential and industrial ventilation systems.
- External wall mounting.

Design

- Made of quality and durable plastic.
- Multi-element structure.
- Fitted with louvre shutters for back flow prevention.
- Screw fixing.

Colour modifications



MV 120 J - basic model with gravity louvre shutters (J)



- Exhaust grille for wall mounting.
- Fitted with louvre shutters for back flow prevention.



MV 120 VJ, MV 150 VJ - models with a round flange and louvre shutters (VJ)



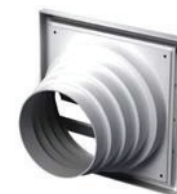
- Exhaust grille for wall mounting.
- Fitted with louvre shutters.
- Fitted with a round connecting flange for mounting with Ø 125 mm air duct (MV 120 J) and 150 mm air duct (MV 150 VJ).



MV 120 VNJ - model with a flange with various diameters and louvre shutters (VNJ)



- Exhaust grille for wall mounting.
- Fitted with louvre shutters.
- Fitted with a round connecting flange for mounting with Ø 100/110/120/130/150 mm air duct.



Overall dimensions

Model	Dimensions, [mm]					Air pass, [m²]	Fig. no.
	□B	□H	L	L1	Flange (D)		
MV 120 J	186	142	15	—	—	0,016	1, 2
MV 120 VJ	186	142	15	45	125	0,0113	1, 3
MV 120 VNJ	186	142	15	115	100, 110, 120, 130, 150	0,012	1, 4
MV 150 VJ	186	142	15	50	150	0,0113	1, 3

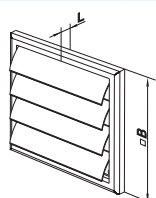


Fig. 1

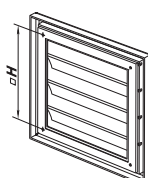


Fig. 2

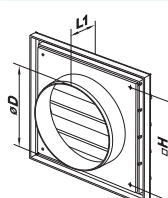


Fig. 3

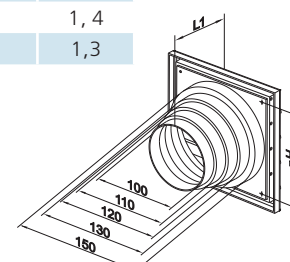


Fig. 4