

10. Optional wired controller

KJR-18B



1. Models

KJR-18B is a thermostat that has developed into 4 types. Each type has its own features to suit different environment.

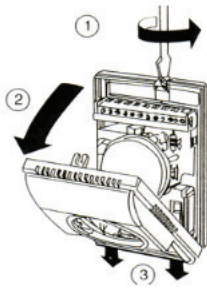
Models	Features
KJR-18B/E-A	Only control 3-speed fan, when the temperature reaches the set-point, it will close the Fan.
KJR-18B	Control motorized valve and 3-speed fan, when the temperature reaches the set-point, it will close the motorized valve and fan both
KJR-18B/E-C	Control motorized valve and 3-speed fan, when the temperature reaches the set-point, it will close the motorized valve with the fan still running
KJR-18B/E-D	Control 4 pipe fan coil units, control two motorized valves and 3-speed fan, when the temperature reaches the set-point, it will close the motorized valves with the fan still running.

2. Specifications

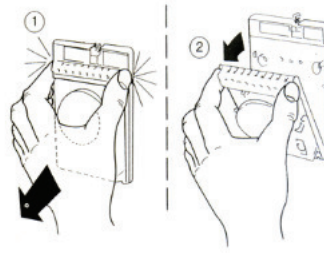
Model	KJR-18B
Available appliance	Ducted FCU without electrical heater
Power supply	AC220V±10%-1Ph-50/60Hz
Operating temperature	0~45℃
Operating Humidity	5~90%RH
Temperature controlling range	10~30℃
Temperature controlling precision	±1℃
Dimension (H×W×D)	130×85×43mm

3. Installation

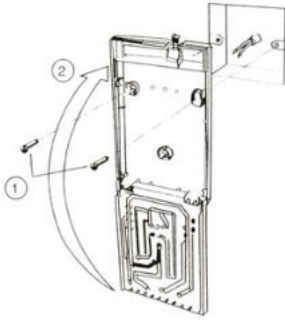
1) Dismantle the front panel



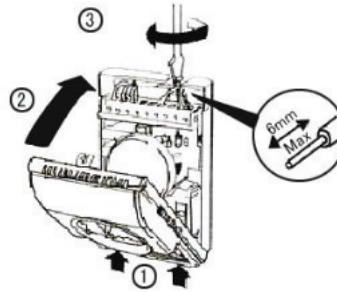
2) Dismantle the middle part



3) Install the back base



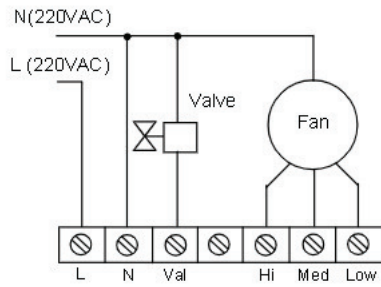
4) Wire Connection



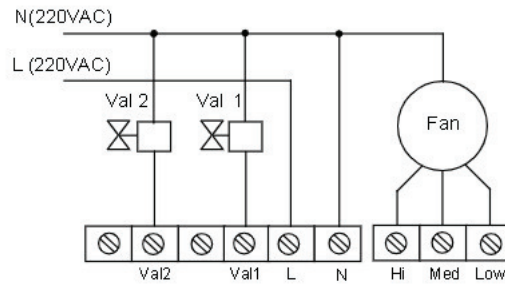
4. Wiring diagrams :

KJR-18B/E-A KJR-18B KJR-18B/E-C

KJR-18B/E-D



2-wire NC valve system
(KJR-18B/E-A without Motorized Valve)



Val1: For heating Val2: For cooling
2-wire NC valve system

Note: Please confirm the model and use corresponding wiring diagram above when you wire.