

DI GROOVED FITTINGS-PN16 ADAPTOR FLANGE

Type: 321G

Doc No: DS-400-321G-01-E

1.0 PRODUCT OVERVIEW

The adaptor flange is used for the conversion of the grooved pipe connection to the flange connection. It is a special connection fitting used when the groove connection is connected to the PN16 flange.



Dimensions:

1"(DN25) – 18"(DN450)

Design Standard:

ISO6182, BS EN1092, BS 4504, GB 5135.11

Connection Standard:

ASME B36.10, ASTM A53-A53M, ISO 4200

Working Pressure:

PN16

Application:

Adaptor flange is suitable for medium and low pressure pipeline systems with nominal pressure PN16, nominal size DN25-DN450, temperature range of - 20 °C +180°C, which is widely applied in water supply and drainage, fire-fighting, air conditioning, etc.

Pipe Material:

Welded and seamless rolled steel pipes according to ASME B36.10, ASTM A53-A53M, ISO 4200, GB/T 21835
PN16 Flange

Surface Treatment:

Sign Off:

Owner: _____ Contractor: _____

Engineer: _____

Location: _____ Date: _____

Approved & Date: _____

- Electrophoretic painting
- Epoxy power painting
- Hot-dip galvanizing
- Black
- Others would be available upon clients' detailed request

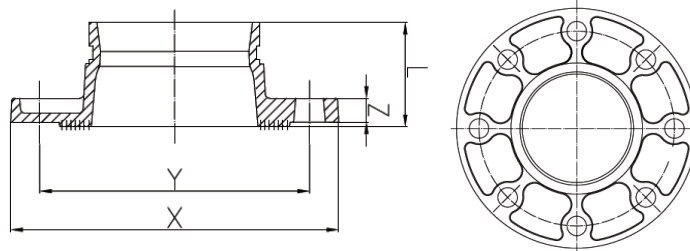
2.0 APPROVALS



3.0 SPECIFICATIONS

ASTM A536, Ductile iron according to 65-45-12. The nodularity is more than 90%, ensuring excellent physical and mechanical properties.

4.0 DIMENSIONS AND PERFORMANCE



Sign Off:

Owner: _____ Contractor: _____
 Location: _____ Date: _____

Engineer: _____
 Approved & Date: _____

Nominal Size	Pipe O.D	Working Pressure	Dimensions				Bolt/Nut
			L	X	Y	Z	No.-Size
DN/in	mm/in	PSI/MPa	mm/in	mm/in	mm/in	mm/in	mm
25	33.7	225	60.5	115	85	16	4-M12
1	1.327	1.6	2.382	4.53	3.35	0.63	
32	42.4	225	60.5	140	100	16	4-M16
1¼	1.669	1.6	2.382	5.51	3.94	0.63	
40	48.3	225	60.5	150	110	16	4-M16
1½	1.902	1.6	2.382	5.91	4.33	0.63	
50	60.3	225	65	165	125	16	4-M16
2	2.375	1.6	2.559	6.5	4.92	0.63	
65	76.1	225	65	185	145	16	4-M16
76.1	3	1.6	2.559	7.28	5.7	0.63	
80	88.9	225	65	200	160	16	8-M16
3	3.5	1.6	2.559	7.87	6.3	0.63	
100	108	225	70	220	180	16	8-M16
108	4.25	1.6	2.756	8.66	7.09	0.63	
100	114.3	225	70	220	180	16	8-M16
4	4.5	1.6	2.756	8.66	7.09	0.63	
125	133	225	70	250	210	18	8-M16
133	5.25	1.6	2.756	9.84	8.27	0.71	
125	139.7	225	70	250	210	18	8-M16
139.7	5.5	1.6	2.756	9.84	8.27	0.71	
150	159	225	70	285	240	18	8-M20
159.1	6.25	1.6	2.756	11.22	9.45	0.71	
150	165.1	225	70	285	240	18	8-M20
165.1	6.5	1.6	2.756	11.22	9.45	0.71	
150	168.3	225	70	285	240	18	8-M20
6	6.625	1.6	2.756	11.22	9.45	0.71	
200	219.1	225	80	340	295	19	12-M20
8	8.625	1.6	3.15	13.39	11.61	0.75	
250	273	225	85	405	355	21	12-M24
10	10.75	1.6	3.346	15.94	13.98	0.83	
300	323.9	225	90	460	410	24	12-M24
12	12.75	1.6	3.543	18.11	16.14	0.94	
350	377	225	100	520	470	25	16-M24
14	14.843	1.6	3.937	20.47	18.5	1	
400	426	225	110	580	525	27	16-M27
16	16.772	1.6	4.331	22.83	20.67	1.06	
450	480	225	115	640	585	20	20-M27
18	18.897	1.6	4.528	25.196	23.03	0.787	

5.0 REFERENCE MATERIALS

Sign Off:

Owner: _____ Contractor: _____

Engineer: _____

Location: _____ Date: _____

Approved & Date: _____



Approved certification for Grooved Fittings and Couplings

I-JM-Grooved fitting: Installation Instructions for grooved fittings and couplings

Sign Off:

Owner: _____ Contractor: _____ Engineer: _____
Location: _____ Date: _____ Approved & Date: _____