

836-837 TANDEM

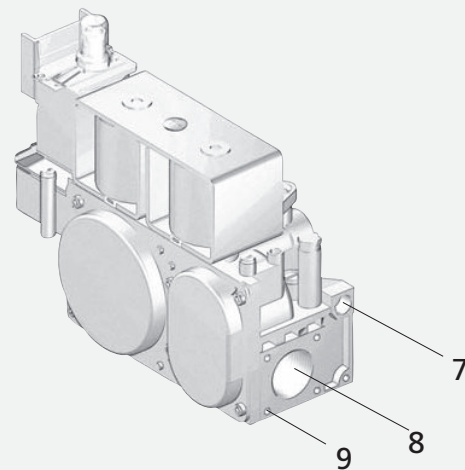
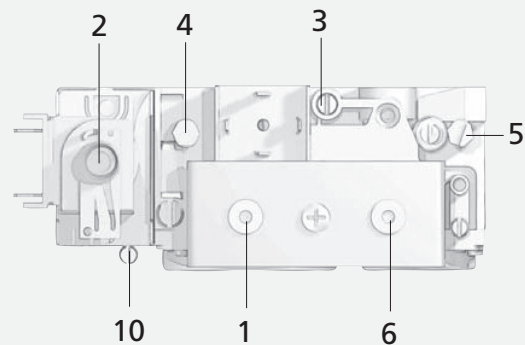
MAIN FEATURES

- Electric modulator of the gas outlet pressure: stepped (836 TANDEM) or continuous (837 TANDEM).
- Two near-silent automatic shut-off valves in class B (class A on request).
- Servo-controlled pressure regulator.
- Pilot outlet (optional) with gas flow restrictor.
- Inlet and pilot filters.
- Inlet and outlet pressure test points.
- Threaded gas inlet and outlet with provision for flange connection.
- Connection for pressure regulator/combustion chamber compensation.



DESCRIPTION

- 1 On-off solenoid valve EV1
- 2 Gas outlet pressure modulator
- 3 Adjustment screw for gas flow to the pilot
- 4 Inlet pressure test point
- 5 Outlet pressure test point
- 6 On-off solenoid valve EV2
- 7 Pilot outlet
- 8 Main gas outlet
- 9 Holes (M5) for fixing flanges
- 10 Connection for pressure regulator/combustion chamber compensation



CODES

836 TANDEM

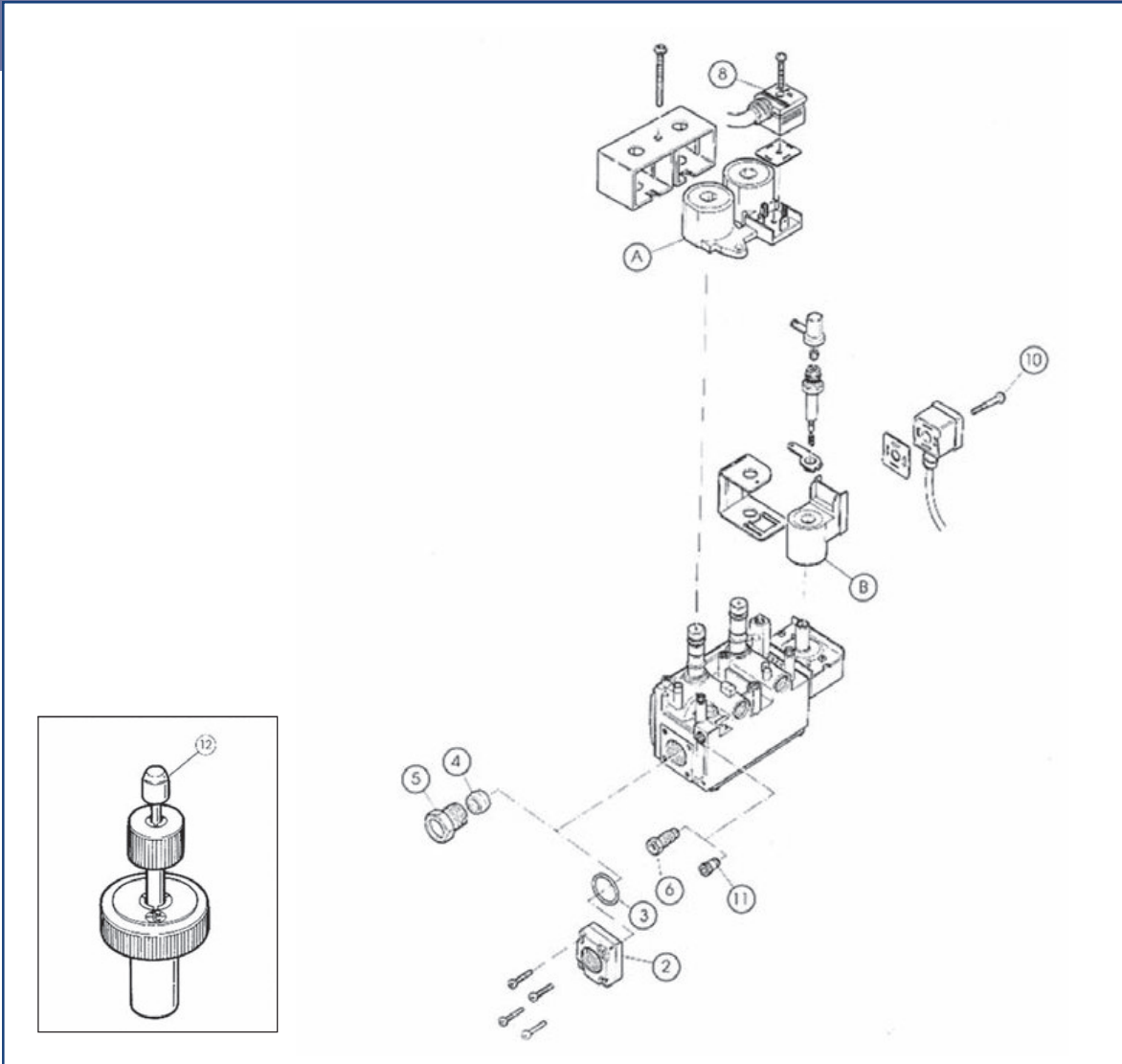
Codes	Ambient Temperature range [°C]	EV Electric supply	EV Class	Modulator Electric supply	Pressure Regulator range [mbar]	Adj. Step opening range (seconds)	Pilot outlet	Maximum gas inlet pressure [mbar]
0836010	0÷60	220/240 V - 50 Hz	B	230 V RAC	2-50	/	No	60
0836011	0÷60	220V - 60 Hz	B	220 V RAC	2-50	/	No	60
0836016	0÷60	230/240 V - 50 Hz	A	230 V RAC	2-50	/	No	60
0836017	0÷60	220/240 V - 50 Hz	B	240 V RAC	2-37	/	No	60
0836018	0÷60	220/240 V - 50 Hz	B	240 V RAC	2-37	/	Yes	60
0836019	0÷60	220/240 V - 50 Hz	B	230 V RAC	6-50	7-12	No	60
0836021	-20÷60	220/240 V - 50 Hz	B	230 V RAC	6-50	7-12	Yes	60



837 TANDEM

Codes	Ambient Temperature range [°C]	EV Electric supply	EV Class	Modulator Electric supply	Pressure Regulator range [mbar]	Adj. Step opening range (seconds)	Pilot outlet	Maximum gas inlet pressure [mbar]
0837010	0÷60	220/240 V - 50 Hz	B	16 V DC 310 mA	2-18	/	No	50
0837011	0÷60	220/240 V - 50 Hz	B	16 V DC 310 mA	3-37	/	No	50
0837013	0÷60	220/240 V - 50 Hz	B	28 V DC 165 mA	3-37	/	No	50
0837023	0÷60	220/240 V - 50 Hz	B	28 V DC 165 mA	2-20	/	No	50
0837024	0÷60	220/240 V - 50 Hz	B	28 V DC 165 mA	3-37	/	No	50
0837025	0÷60	220/240 V - 50 Hz	B	28 V DC 165 mA	3-37	/	Yes	50
0837029	0÷60	220/240 V - 50 Hz	B	28 V DC 165 mA	2-20	/	P	50
0837033	0÷60	220/240 V - 50 Hz	B	28 V DC 165 mA	2-18	/	No	50
0837034	0÷60	24 V - 50 Hz (Low Energy)	B	28 V DC 165 mA	1.5-25	/	No	50
0837035	0÷60	24 V - 50 Hz (Low Energy)	B	28 V DC 165 mA	2.5-37	/	No	50
0837038	0÷60	220/240 V - 50 Hz	B	28 V DC 165 mA	3-37	/	P	50
0837100	0÷60	120 V - 60 Hz	B	16 V DC 310 mA	3-37	/	No	50
0837301	-20÷60	220/240 V - 50 Hz	B	16 V DC 310 mA	2-20	/	No	50
0837302	-20÷60	220/240 V - 50 Hz	B	16 V DC 310 mA	3-37	/	No	50
0837303	-20÷60	220/240 V - 50 Hz	B	28 V DC 165 mA	3-37	/	No	50
0837304	-20÷60	24 V - 60 Hz (Low Energy)	B	28 V DC 165 mA	2÷25	/	No	50
0837305	-20÷60	220/240 V - 50 Hz	B	16 V DC 310 mA	2-18	/	No	50

P Plugged (0972041)



SPARE PARTS

N.	Code	Description	Q.ty	N.	Code	Description	Q.ty
A1	0.967.090	220 V, 50 Hz solenoid (black color)	5	B2	0.967.135	220 V modulating solenoid, rectified AC (836)	5
A2	0.967.091	24 V, 50 Hz solenoid (grey color)	5	B3	0.967.138	16 V modulating solenoid (837)	5
B1	0.967.097	28 V modulating solenoid (837)	5	B4	0.967.140	240 V modulating solenoid (837)	10

ACCESSORIES

N.	Code	Description	Q.ty	N.	Code	Description	Q.ty
2	0.906.266	Rp 1/2" straight flange with O-ring and screws	100	8a	0.960.016	Plug and lead L = 1,000 mm	10
3	0.925.028	O-ring for flange	100	8b	0.960.022	Tandem plug and lead L = 600 mm	10
4	0.957.008	ø 16 mm olive	10	10	0.960.018	Step modulator plug gasket + screw L = 1,000 mm (836)	5
5	0.958.027	ø 16 mm tube nut	10	11	0.972.041	Plug for the pilot outlet (M10x1 with O-ring)	10
6a	0.958.030	ø 4 mm pilot tube shear-off	10	12	0.999.994	Min-max modulator adjusting tool	5
6b	0.958.031	ø 6 mm pilot tube shear-off	10				
6c	0.958.032	ø 1/4" pilot tube shear-off	10				

Subject to change without notice