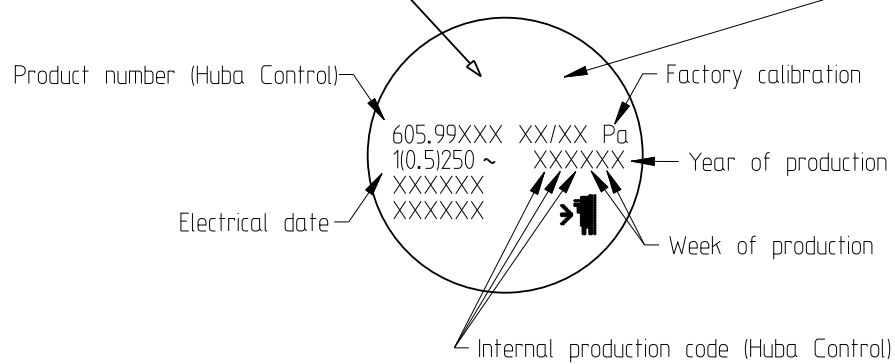
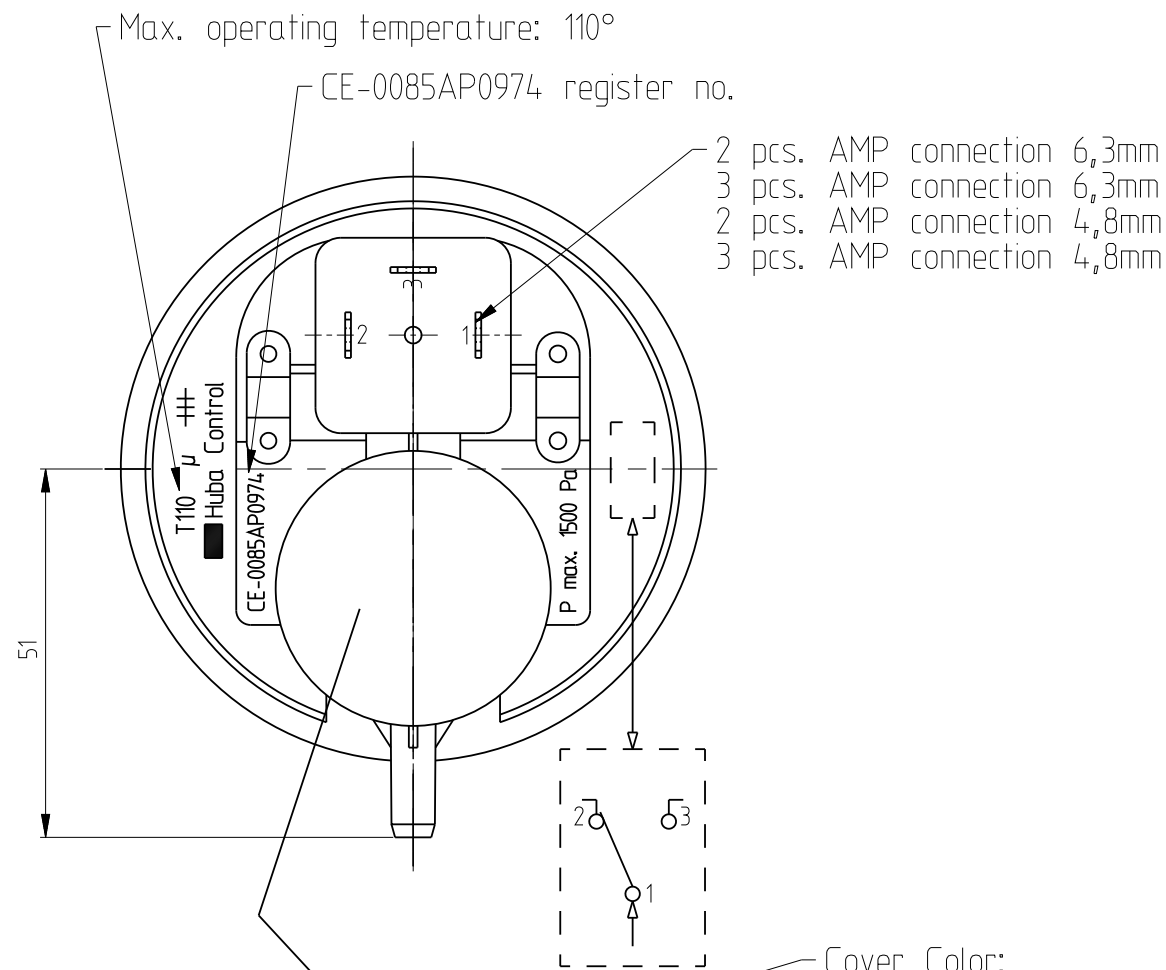


100 reference measure for scale

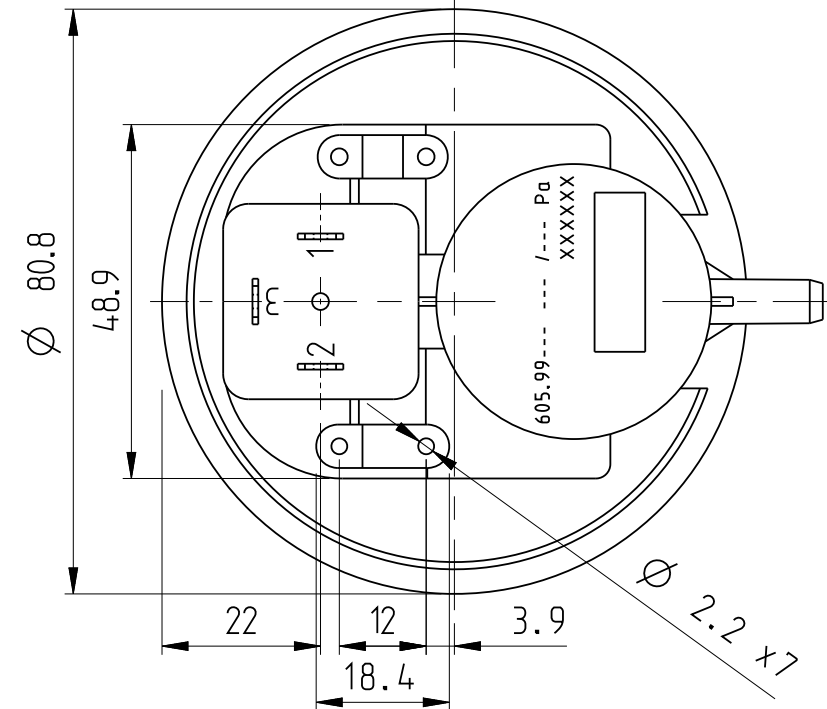
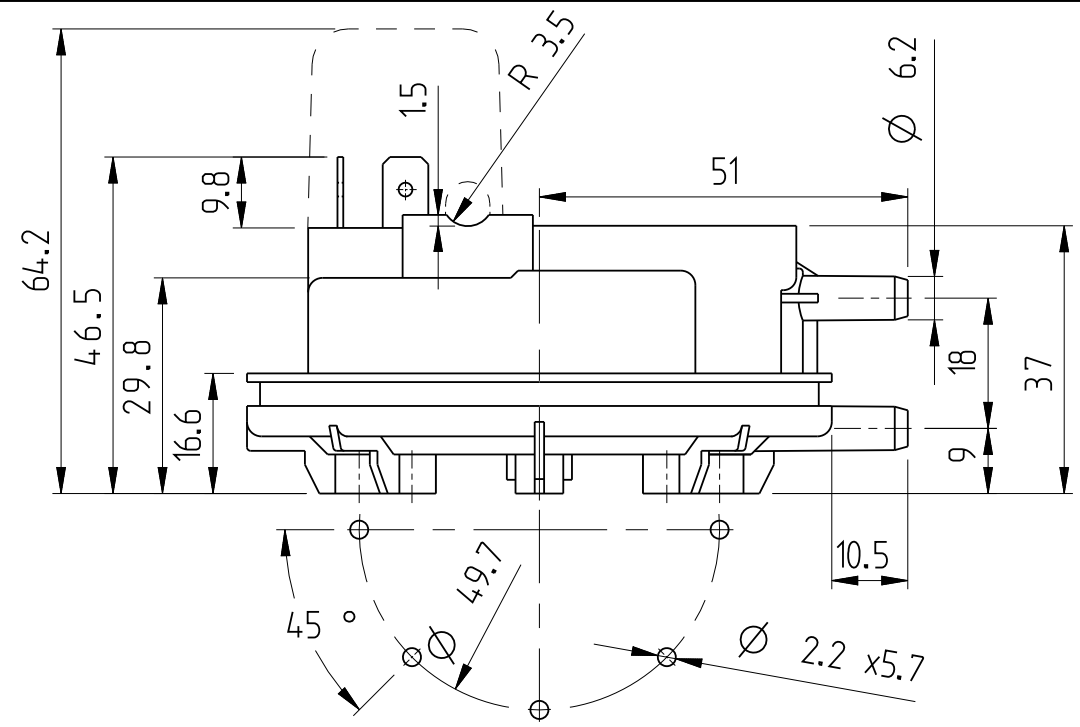
This drawing is legally owned by Huba Control AG. Duplications, use or information to third parties are cause of an action.

Diese Zeichnung ist Eigentum der Huba Control AG. Jede Vervielfältigung, Verwendung oder Mitteilung an Dritte Personen ist strafbar und wird gerichtlich verfolgt.



Cover Color:
grey, red, pure white,
yellow, orange, light blue,
pink, green, brown

Cover printing - scale 1:1



Materials	Lexan 500 R
	LSR (Liquid Silicon Rubber)
	POM (Polyacetal)
	Lexan 500 R 10%GF
	Cu Sn 6 F41
	Cu Sn 8 F66
	X12 Cr Ni 17/7
	E-Cu 58
CuNi44 / AgNi10 / Au	

Switch Type	Huba No. 605.99 _ _ _	Calibration high: _ +/- _ Pa		
		Calibration low: _ +/- _ Pa		
1	1_ _ _	Customer drawing _ _ _ _ _		
pos.	article no.	name	dimension, standard	
			material, standard, treatment	
reference no.: 605	* = test feature, (XXX) = special feature		date	name
replaced by:.	is subject to the following permissions:		scale:	drawn:
			1:1	.
			modified:	.
Huba Control		tolerating principle: DIN ISO 8015	format:	date
FEINE MESSIDEEN FÜR DRUCK UND STRÖMUNG		general tolerances: DIN ISO 2768-mK	drawing no.:	modification:
Industriestrasse 17		measure without tolerances: <math><0,5 \pm 0,1</math>	A3 605.99	.
CH-5436 Würenlos		www.hubacontrol.com		page:
				1/1