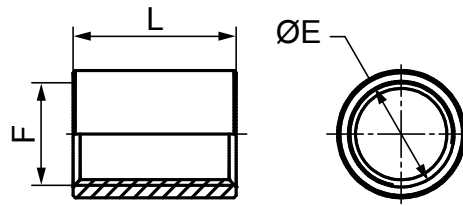


03MANIZ




BLACK SOCKET

- Material: S235JR EN 10025
- Dimension EN 10241:2002 (DIN 2986)

- Thread UNI - ISO 228/1 CL.B

CHARACTERISTICS: This rule defines the minimum outside diameter of the socket and does not provide tolerance. Pipe sealing is checked either by hydraulic test or by current Foucault test according to SEP 1925/PRP 02.74.

USE: suitable for connecting two pipes.

CODICE	F	L [mm]	ØE [mm]		€ Each
26801	1/8"	17	14,8	10	1,88
26802	1/4"	25	18,5	10	1,10
26803	3/8"(**)	26	21,9	100	1,14
26804	1/2"(**)	34	26,6	100	1,22
26805	3/4"(**)	36	31,8	100	1,67
26806	1"(**)	43	38	100	2,48
26807	1.1/4"	48	48,3	10(*)	5,88
26808	1.1/2"	48	54,5	10(*)	7,25
26809	2"	56	66,3	10(*)	10,13
26810	2.1/2"	65	82	10(*)	13,59
26811	3"	71	95	6(*)	20,06
26813	4"	83	121,5	6(*)	34,92

(**) forged pieces

(*) thermoretractil packaging