



Producator: ***KERMI Germania***

Calorifer din otel tip panou X2

Model: Compact

Cod Romstal: 34KR%



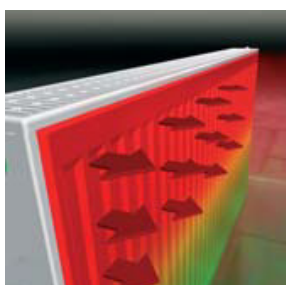
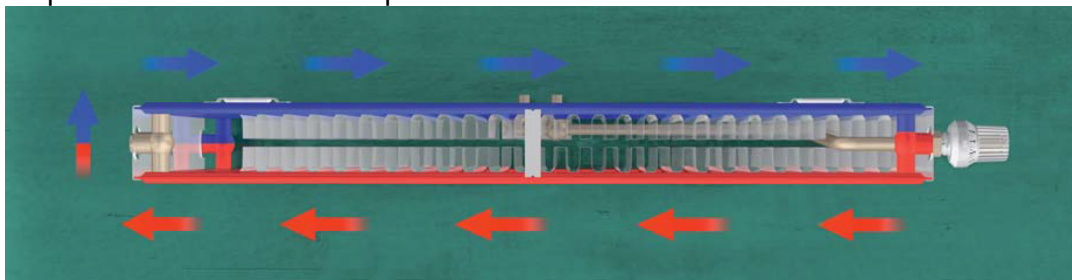
FISA TEHNICA



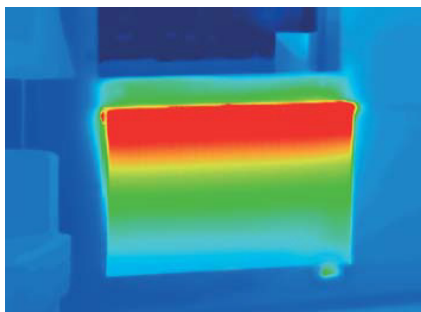
Revizia nr. 0 / februarie 2013

Gama de produse Kermi cuprinde radiatoare panou compacte, radiatoare panou cu ventil, radiatoare verticale, radiatoare cu fete plane, radiatoare igienice, radiatoare de baie, radiatoare de design, convectoare.

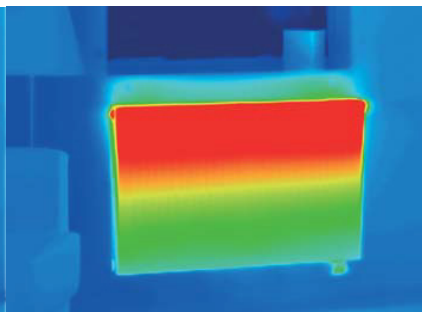
Toate radiatoarele Kermi sunt realizate in tehnologia X2 care prin modul de realizare a apei in interiorul radiatoarelor asigura o eficienta sporita cu o economie de energie de 11% si un timp redus de incalzire cu aproximativ 25% fata de radiatoarele standard.



Radiatoare conventionale

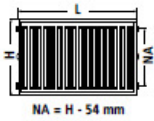


Radiatoarele Kermi



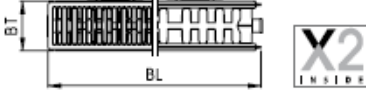

Radiatoarele Kermi sunt livrate cu set complet de accesorii (sistem de fixare, dopuri si aerisitor).

Gama de dimensiuni si caracteristici tehnice:



THERM X2 PROFIL-K

Sample Order	Type 10					Type 11					Type 12				
Type 10 600 x 700 mm = Item No. FK0100607															
Type 11 600 x 100 mm = Item No. FK0110610															
Type 12 500 x 1200 mm = Item No. FK0120512	300	400	500	600	900	300	400	500	600	900	300	400	500	600	900
Height mm	1,2361	1,255	1,2739	1,2928	1,2935	1,2196	1,2371	1,2546	1,2721	1,30440	1,2731	1,281	1,2889	1,2969	1,3343
Radiator exponent															
watts/m 75/65/20° C	335	425	514	602	872	551	697	840	979	1390	720	894	1063	1229	1723
Length mm	heat outputs in watts / room temperature 20° C														
400 watts 75/65° C	134	170	206	241	349	220	279	336	392	556	288	358	425	492	689
500 watts 75/65° C	168	213	257	301	436	276	349	420	490	695	360	447	532	615	862
600 watts 75/65° C	201	255	308	361	523	331	418	504	587	834	432	536	638	737	1034
700 watts 75/65° C	235	298	360	421	610	386	488	588	685	973	504	626	744	860	1206
800 watts 75/65° C	268	340	411	482	698	441	558	672	783	1112	576	715	850	983	1379
900 watts 75/65° C	302	383	463	542	785	496	627	756	881	1251	648	805	957	1106	1551
1000 watts 75/65° C	335	425	514	602	872	551	697	840	979	1390	720	894	1063	1229	1723
1100 watts 75/65° C	369	468	565	662	959	606	767	924	1077	1529	792	983	1169	1352	1895
1200 watts 75/65° C	402	510	617	722	1046	661	836	1008	1175	1668	864	1073	1276	1475	2068
1300 watts 75/65° C	436	553	668	783	1134	716	906	1092	1273	1807	936	1162	1382	1598	2240
1400 watts 75/65° C	469	595	720	843	1221	771	976	1176	1371	1946	1008	1252	1488	1721	2412
1600 watts 75/65° C	536	680	822	963	1395	882	1115	1344	1567	2224	1152	1431	1701	1967	2757
1800 watts 75/65° C	603	765	925	1084	1570	992	1255	1512	1762	2502	1296	1609	1914	2212	3102
2000 watts 75/65° C	670	850	1028	1204	1744	1102	1394	1680	1958	2780	1440	1788	2126	2458	3446
2300 watts 75/65° C	771	978	1182	1385	2006	1267	1603	1932	2252	3197	1656	2056	2445	2827	3963
2600 watts 75/65° C	871	1105	1336	1565	2267	1433	1812	2184	2546	3614	1872	2325	2764	3196	4480
3000 watts 75/65° C	1005	1275	1542	1806	2616	1653	2091	2520	2937	4170	2160	2682	3189	3687	5169

Type 22					Type 33					Sample Order	
										Type 22 600 x 800 mm = Item No, FK0220608 Type 33 400 x 1000 mm = Item No, FK0330410	
double row with two convectors Depth 100 mm, Item No, FK022,...					triple row with three convectors Depth 155 mm, Item No, FK033,...						
300	400	500	600	900	300	400	500	600	900	Height mm	
1,2776	1,2827	1,2879	1,293	1,30690	1,2839	1,29	1,2962	1,30230	1,329	Radiator exponent	
959	1207	1441	1666	2295	1381	1744	2081	2394	3214	watts/m 75/65/20° C	
										Length mm	
384	483	576	666	918	552	698	832	958	1286	400	watts 75/65° C
480	604	721	833	1148	691	872	1041	1197	1607	500	watts 75/65° C
575	724	865	1000	1377	829	1046	1249	1437	1929	600	watts 75/65° C
671	845	1009	1166	1607	967	1221	1457	1676	2250	700	watts 75/65° C
767	966	1153	1333	1836	1105	1395	1665	1915	2571	800	watts 75/65° C
863	1086	1297	1500	2066	1243	1570	1873	2155	2893	900	watts 75/65° C
959	1207	1441	1666	2295	1381	1744	2081	2394	3214	1000	watts 75/65° C
1055	1328	1585	1833	2525	1519	1919	2289	2634	3536	1100	watts 75/65° C
1151	1449	1729	1999	2754	1657	2093	2497	2873	3857	1200	watts 75/65° C
1247	1569	1873	2166	2984	1795	2267	2706	3112	4179	1300	watts 75/65° C
1343	1690	2018	2333	3213	1934	2442	2914	3352	4500	1400	watts 75/65° C
1535	1931	2306	2666	3672	2210	2791	3330	3831	5143	1600	watts 75/65° C
1726	2173	2594	2999	4131	2486	3139	3746	4310	5786	1800	watts 75/65° C
1918	2414	2882	3332	4590	2762	3488	4162	4788	6428	2000	watts 75/65° C
2206	2776	3315	3832	5279	3177	4011	4787	5507	7393	2300	watts 75/65° C
2494	3138	3747	4332	5967	3591	4535	5411	6225	8357	2600	watts 75/65° C
2877	3621	4323	4998	6886	4143	5232	6243	7183	9643	3000	watts 75/65° C

Colectivul de redactare a cartii tehnice:

Tehnoredactare: **Ing. Violeta POPESCU**

BUCURESTI - ROMANIA - Sos. Vitan-Barzesti nr. 11A, sector 4; Tel/Fax: 021-332.09.01, 334.94.63;
Reg. Com. J/40/14205/1994 - Cod fiscal R 5990324 - Cont RO74RNCB5010000000130001 B.C.R.
Sector 1, BUCURESTI - RO43BACX0000000030565310 HVB sucursala Grigore Mora
BUCURESTI; Capital Social: 139.400.000.000 ROL (13.940.000 RON)

