



The product

The experience gained by Valsir in the Triplus®, Silere® and PP3® soundproof waste systems allowed us to reach levels of excellence also in our flushing systems. To the numerous advantages of Tropea S we also added silence. Tropea S is in fact the first cistern in the world made of a soundproofing plastic material.

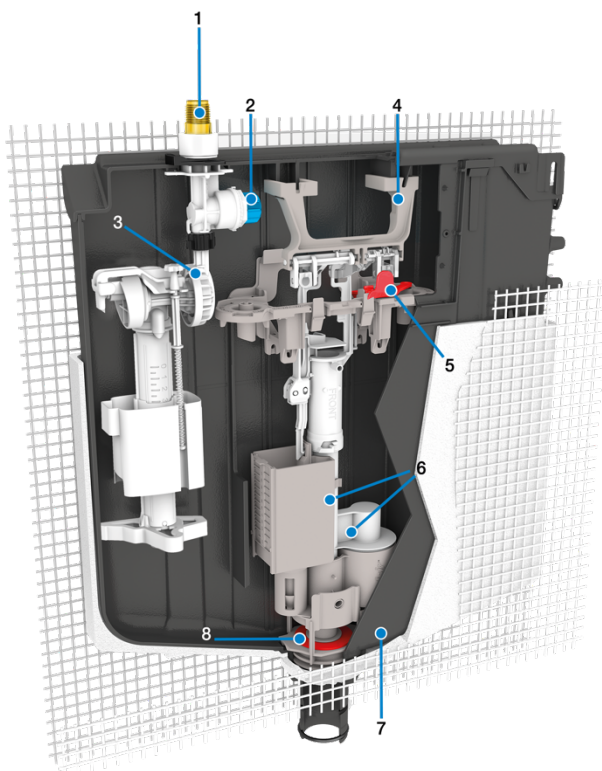
Inside the Valsir Research and Development laboratories a special plastic compound was designed using a formula (exclusive to Valsir) with the aim of reducing the noise emissions from the flush cistern.

Laboratory tests show that the perceived noise from Tropea S is 5 times lower as compared to the most widely-used cisterns on the market.

Tropea S is the only in-wall cistern on the market with a float valve and a stop valve certified at the top of the category in terms of reduced noise emissions. Not only high mechanical performance but also excellent acoustic performance. In addition, thanks to the easy adjustments of the water volumes, Tropea S offers three different settings: 6/3, 4.5/3 and 4/2 liters, thus meeting the more stringent requirements in terms of environmental sustainability and reduction of water usage

Characteristics

- The material of the container is designed to ensure a high performing absorption of the vibrations.
- To simplify the installation on site, the flushing cistern is completely pre-assembled.
- The stop valve with a rotating fitting allows an easier installation.
- The patented outlet valve guarantees the correct cleaning of the WC of any kind, even rimless.
- The materials used for both outlet valve and floating valve reduce the limescale growth.
- Actuation on your choice: mechanical, pneumatic, electronic, or even electro-mechanical or mechanical and pneumatic at the same time.
- All the rubber components comply with the EN 681/WC, a warranty of reliability and incomparable resistance to chemical agents.
- Tropea S water settings and adjustments are easy and can be set at 6/3, 4.5/3 or 4/2 liters, thus respecting environmental resources and according to the Green Building principles.



1. Rotating connection
2. Guaranteed accessibility
3. Protective filter
4. Pneumatic, mechanical and electronic activation
5. Safety device
6. Delayed formation of limescale thanks to the use of 2 different materials in the production of the components
7. Cistern compound is a unique Valsir formula
8. Bottom seal made of silicone, an exclusive Valsir compound

Installation versatility

Regardless the installation type, Tropea S is the ideal solution. The wide range of frames, the available accessories and the technical solutions adopted inside the cistern guarantee flexibility, speed and adaptability to all types of walls and installation requirements.

- Tropea S in-wall
- Tropea S Fixsystem
- Tropea S Block
- Free-standing Tropea S Block

Tropea S in-wall

It is designed for installation in walls of reduced thickness made of brick or wood with floor standing WC pan. The flush pipe allows an adjustment of 20 mm upwards or downwards to correct any mistake of height once the floor finishing has been laid.

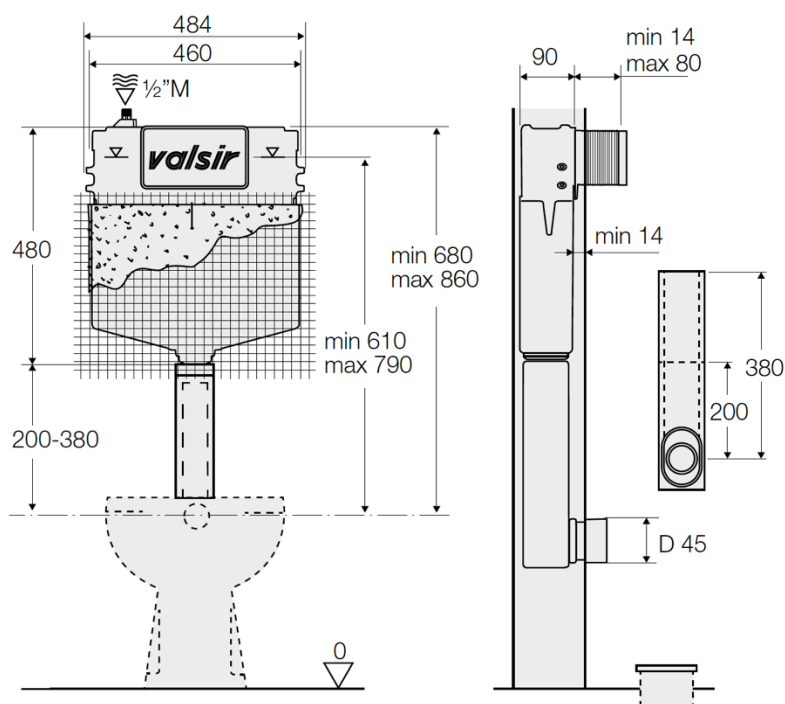
All the materials necessary for installation are included in the packaging and it is available with the Valsir Ariapur odour extractor system.

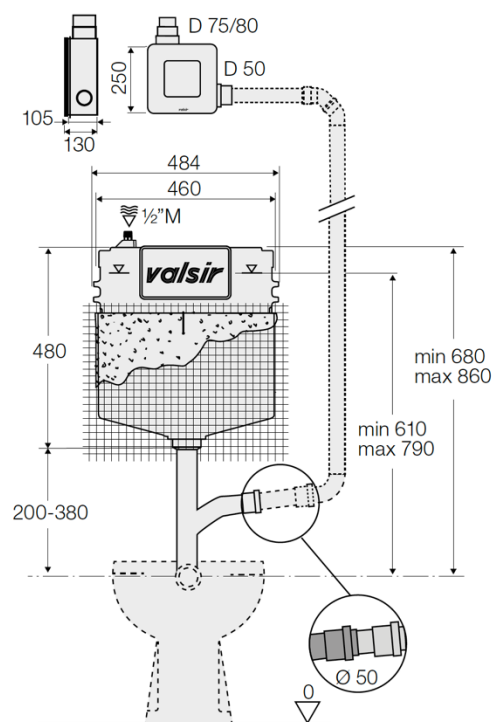
Characteristics	
Thickness	90 mm
Actuations	Mechanical
	Pneumatic
	Electronic
Flush volumes	6/3, 4.5/3, 4/2 l
Standard flush volume	6/3 l
CE mark	EN14055-CL2-NLI EN14055-CL1-4-NLI-VRII EN14055-CL1-5-NLI-VRII EN14055-CL1-6-NLI-VRII
Ariapur version	Available
WC connection	Floor standing pans
Installation	Masonry walls, dry walls, stud frame walls
Position plate	Front
Push plates standard dimension	215x145 mm
Valsir Design push plate dimension	MEDIUM



Dimensions

Technical measures cistern.





Plates compatibility

Push plates compatibility.

[illegible]

Pneumatic actuators compatibility with pneumatic flush cisterns.

[illegible]

Approvals

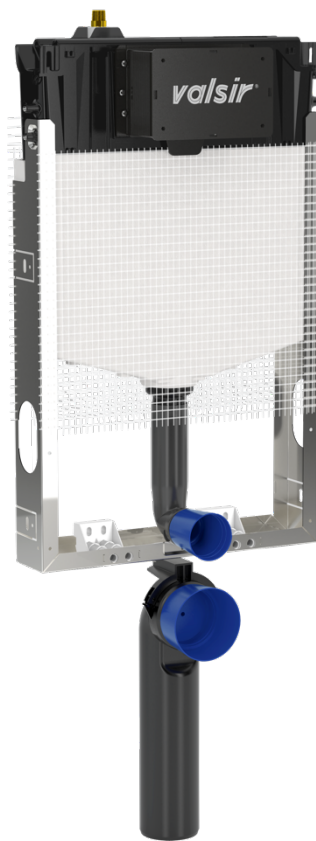
The approvals of Tropea S and Valsir flushing systems are available on the website www.valsir.it

Tropea S Fixsystem

Suitable for wall-hung WC pans installed onto brick walls, the Fixsystem version is equipped with a 400 mm waste bend to allow a 90 mm wall installation.

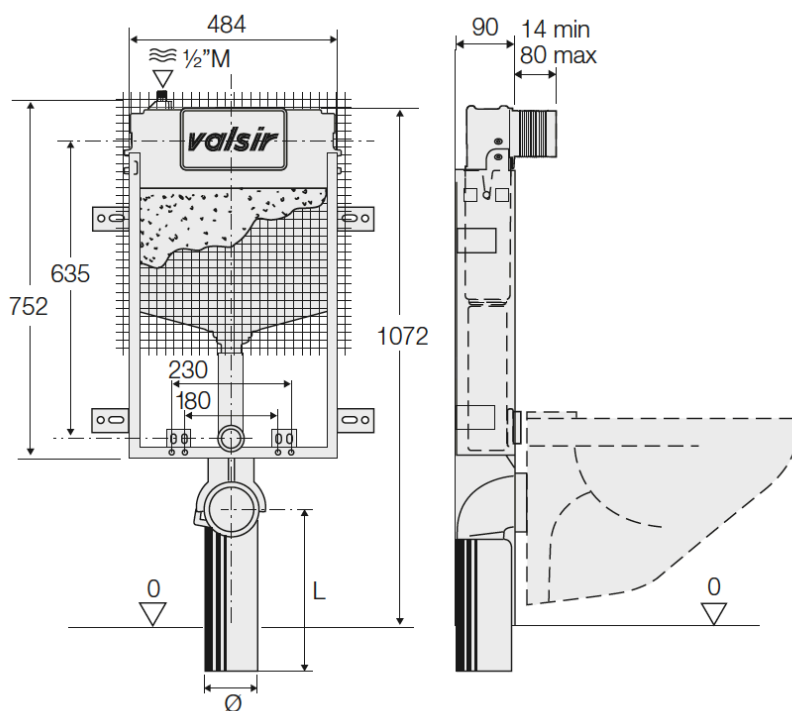
The frame and all the anchor points are made entirely of galvanized steel to guarantee maximum corrosion resistance. Tropea S Fixsystem is available with the Valsir Ariapur odour extractor fan.

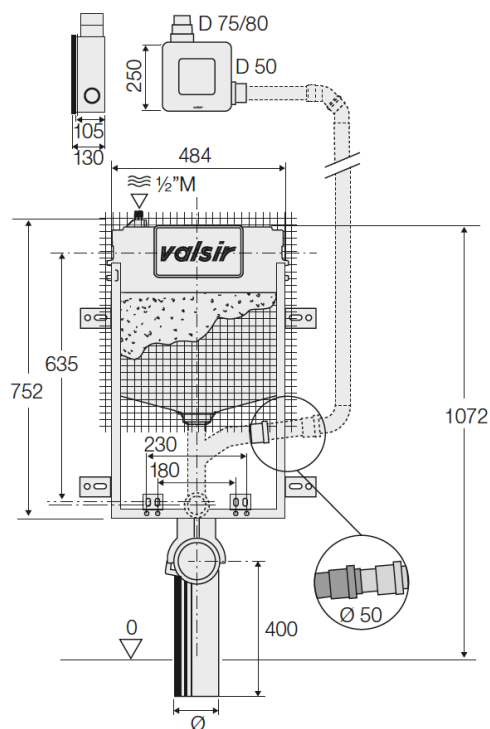
Characteristics	
Thickness	90 mm
Actuations	Mechanical
	Pneumatic
	Electronic
Flush volumes	6/3, 4.5/3, 4/2 l
Standard flush volume	6/3 l
Waste bend	Ø 90 L 400 mm - Ø 90/110 L 230 mm
CE mark	EN14055-CL2-NLI
	EN14055-CL1-4-NLI-VRII
	EN14055-CL1-5-NLI-VRII
	EN14055-CL1-6-NLI-VRII
Load resistance	In compliance with EN 997
Ariapur version	Available
WC connection	Wall-hung pans (standard and disabled)
Installation	Masonry walls
Position plate	Front
Push plates standard dimension	215x145 mm
Valsir Design push plate dimension	MEDIUM



Dimensions

Technical measures cistern.





Plates compatibility

Push plates compatibility.

P1	P2	P3	P4	P5	P6	P7	Infrar. Dual	Infrar. Eye	Infrar. Inox	Infrar. Remote	Design
.

Pneumatic actuators compatibility with pneumatic flush cisterns.

R8	R2	R7	R3	R4	R5	R6	Security	Foot1	Foot2	R1
.

Approvals

The approvals of Tropea S and Valsir flushing systems are available on the website www.valsir.it

Tropea S Block

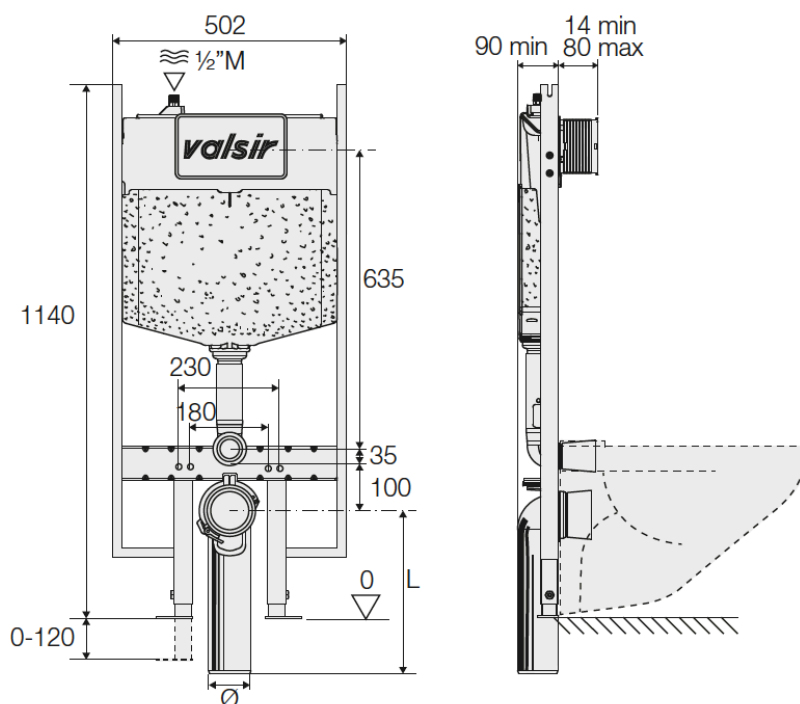
Given its painted steel frame, Tropea S Block is ideal for installations in light or mixed walls (plasterboard, wood) with wall-hung pans. Thanks to the reduced thickness of the body and the 400 mm waste bend, this model can be installed in any kind of wall. The painted surface gives to the frame a long-lasting corrosion resistance. Tropea S Block S90 is available with the Valsir Ariapur odour extractor system.

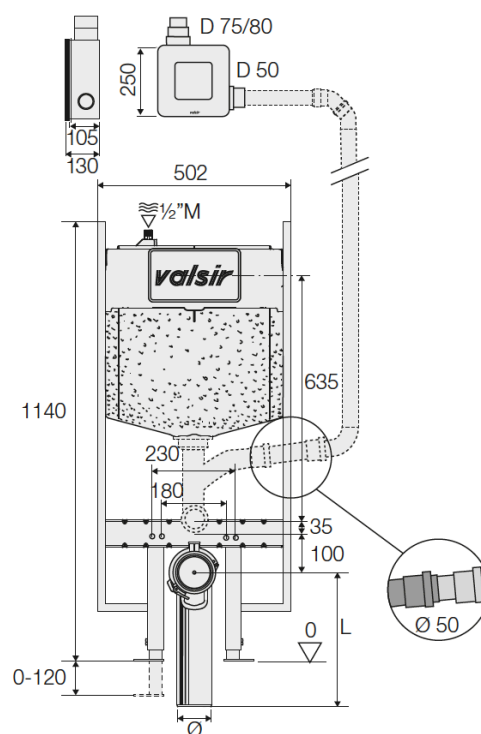
Characteristics	
Thickness	90 mm
Actuations	Mechanical
	Pneumatic
	Electronic
Flush volumes	6/3, 4.5/3, 4/2 l
Standard flush volume	6/3 l
Waste bend	Ø 90 L 400 mm - Ø 90/110 L 230 mm
CE mark	EN14055-CL2-NLI EN14055-CL1-4-NLI-VRII EN14055-CL1-5-NLI-VRII EN14055-CL1-6-NLI-VRII
Load resistance	In compliance with EN 997
Ariapur version	Available
WC connection	Wall-hung pans (standard and disabled)
Installation	dry walls, stud frame walls
Push plates standard dimension	215x145 mm
Valsir Design push plate dimension	MEDIUM



Dimensions

[Technical measures cistern.](#)





Plates compatibility

Push plates compatibility.

P1	P2	P3	P4	P5	P6	P7	Infrar. Dual	Infrar. Eye	Infrar. Inox	Infrar. Remote	Design
.

Pneumatic actuators compatibility with pneumatic flush cisterns.

R8	R2	R7	R3	R4	R5	R6	Security	Foot1	Foot2	R1
.

Approvals

The approvals of Tropea S and Valsir flushing systems are available on the website www.valsir.it

Tropea S Block is EPD (Environmental Product Declaration) certified. This document describes environmental impacts of a specific quantity of material or service during the life cycle. The EPD document can be downloaded from the website www.valsir.it in the EPD area.

Free-standing Tropea S Block

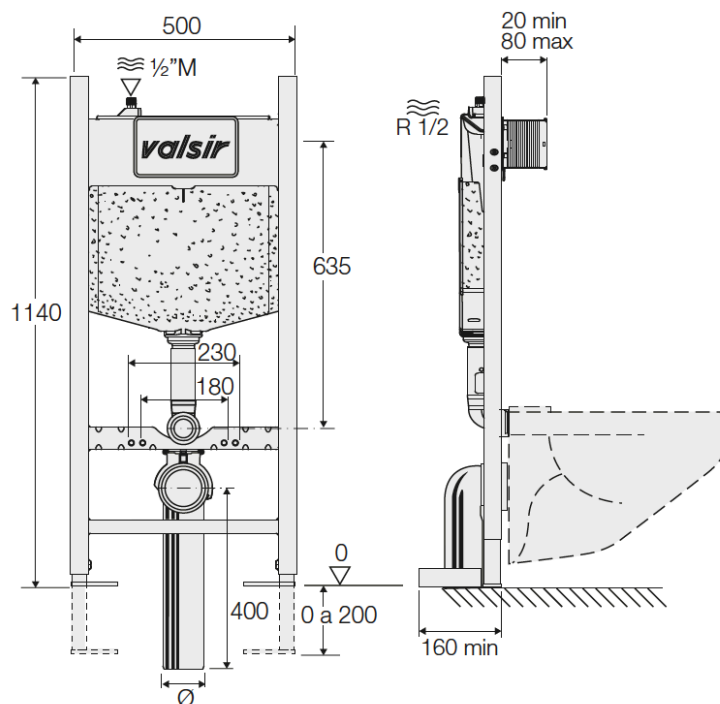
With a frame made of painted steel, it is designed for installations in light or mixed walls (plasterboard, wooden wall) with wall-hung pan. Thanks to the peculiar structure of the feet that are anchored to the floor, the frame does not require any other anchor points. The painted surface gives to the frame a long-lasting corrosion resistance. Tropea S Block free-standing is available with the Valsir Ariapur odour extractor system.

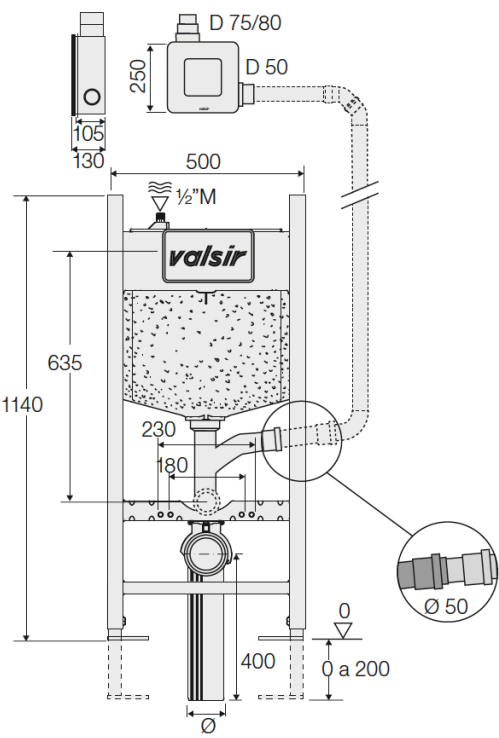
Characteristics	
Thickness	160 mm
Actuations	Mechanical
	Pneumatic
	Electronic
Flush volumes	6/3, 4.5/3, 4/2 l
Standard flush volume	6/3 l
Waste Bend	Ø 90 L 400 mm
CE mark	EN14055-CL2-NLI
	EN14055-CL1-4-NLI-VRII
	EN14055-CL1-5-NLI-VRII
	EN14055-CL1-6-NLI-VRII
Load resistance	In compliance with EN 997
Ariapur version	Available
WC connection	wall-hung pans (standard and disabled)
Installation	anchored to the floor in dry walls
Push plates standard dimension	215x145 mm
Valsir Design push plate dimension	MEDIUM



Dimensions

Technical measures cistern.





Plates compatibility

Push plates compatibility.

P1	P2	P3	P4	P5	P6	P7	Infrar. Dual	Infrar. Eye	Infrar. Inox	Infrar. Remote	Design
.

Pneumatic actuators compatibility with pneumatic flush cisterns.

R8	R2	R7	R3	R4	R5	R6	Security	Foot1	Foot2	R1
.

Approvals

The approvals of Tropea S and Valsir flushing systems are available on the website www.valsir.it

Free-standing Tropea S Block is EPD (Environmental Product Declaration) certified. This document describes environmental impacts of a specific quantity of material or service during the life cycle. The EPD document can be downloaded from the website www.valsir.it in the EPD area.