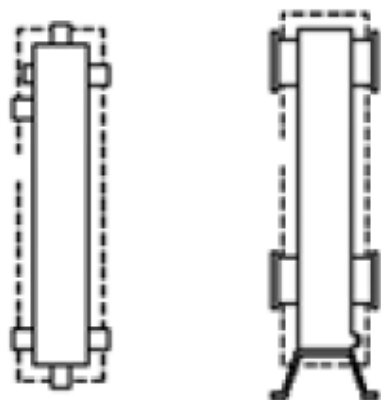


Vas de echilibrare hidraulică



306720 WH 40, 3,5 m<sup>3</sup> /h, Rp 2"

306721 WH 95, 8 m<sup>3</sup> /h, Rp 2"

306726 WH 160, 12 m<sup>3</sup> /h, DN 65

306725 WH 280, 21,5 m<sup>3</sup> /h, DN 80