



FLOOR LAYING INSTRUCTIONS

WOODRIC DRYBACK, WOODRIC EIR DRYBACK AMARON WOOD DRYBACK, AMARON WOOD EIR DRYBACK

NOTICE!

In order to eliminate colour discrepancies, during a given investment, it is recommended to use panels from a single production batch for installation. Before the installation, it is absolutely necessary to check the production batch, whose number can be found on each packaging.

NOTICE!

Before the installation, the panels must be carefully checked for material defects, especially decorative surface defects, mechanical damage of locks as well as colour or gloss discrepancies.

The variety and frequency of structures, wooden rings and knots, the presence of whitened wooden rings or cracks are elements of the design and do not constitute product defects. The installation of panels is regarded as the product acceptance and no damage and/or colour discrepancies as well as design varieties listed above can be the grounds for any subsequent claims regarding the product.



It is recommended that the panels be sorted according to the designs and shades before they are laid, and then the panels must be installed alternately in order to obtain the satisfactory uniform effect of variety in the room area. The panels should always be laid towards the main light source in order to obtain the best possible visual effect.

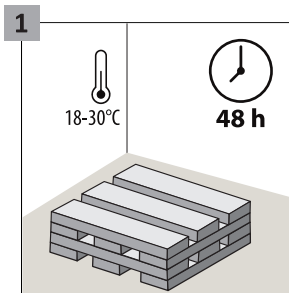
The open packaging must be used immediately (see-> PREPARATION, section No. 10)

ASSEMBLY

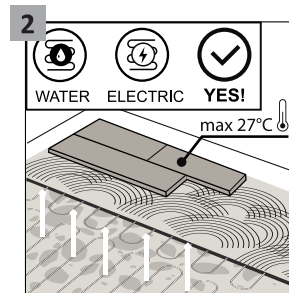


PREPARATION:

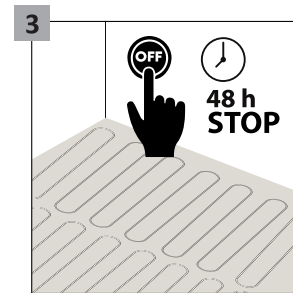
 **temperature: 18-30°C**
 **humidity: 40-65%**



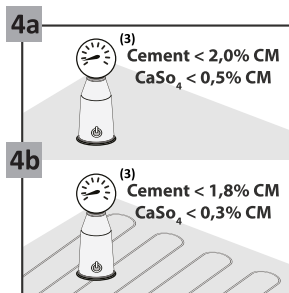
The acclimatization time must be at least 48 hours in the room with a temperature of 18-30°C where the panels will be installed. Place 3 packages per layer to facilitate the acclimatization process.



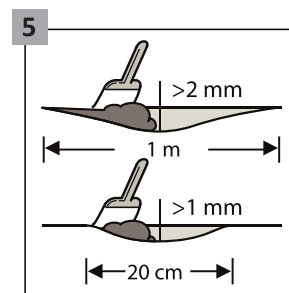
Floor panels can be used on subfloors with embedded underfloor heating (water or electric), provided that the maximum floor surface temperature is maintained at 27°C during operation.



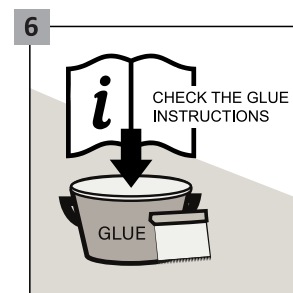
48 hours before installation, turn off the underfloor heating and, if necessary to maintain the guidelines regarding subfloor temperature and humidity, set the floor temperature to 18-20°C or use an alternative heating source.



In the case of a cement screed, the moisture content in the substrate before pouring the mass must be lower than 2.0%, and in the case of anhydrite screed, lower than 0.5%. In the case of installation with the underfloor heating, the abovementioned values must be 1.8% and 0.3% respectively.



Make sure the ground is completely flat. All surface irregularities exceeding 1 mm over a length of 20 cm or 2 mm over a length of 1 m must be leveled.



Before installation, read and be sure to follow the glue manufacturer's guidelines regarding surface preparation, selection of the type of trowel and glue consumption.

ASSEMBLY



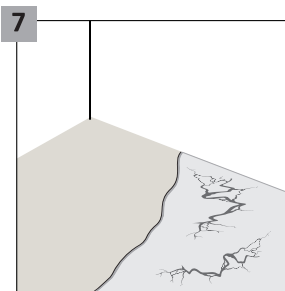
PREPARATION:



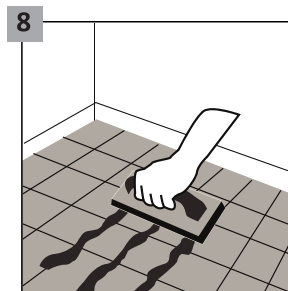
temperature: 18-30°C



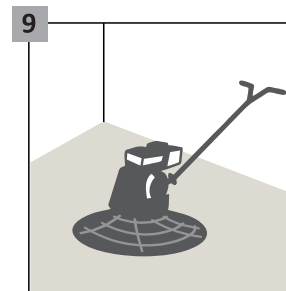
humidity: 40-65%



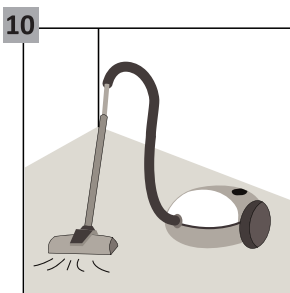
The type of substrate, its quality and preparation, especially unevenness, have a decisive impact on the final effect, which is why it is required to make the substrate from a self-leveling compound. In the case of ceramic tiles or wooden substrates (OSB, plywood), prepare the substrate in accordance with the recommendations of the manufacturer of the recommended adhesive.



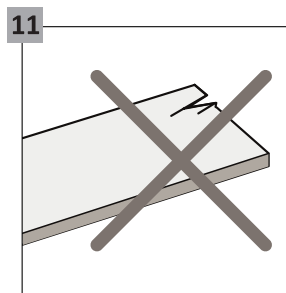
In case of installation on a surface covered with ceramic tiles, it is necessary to fill the joints of the tiles with a durable joint filling compound. Additionally, it is required to use a self-leveling compound to obtain a smooth surface with uniform absorbency.



If a self-leveling compound is used, it is necessary to grind the surface to level it and remove the top layer.



Directly before installation, the substrate should be carefully vacuumed to remove all dirt.



Before and during installation, all panels should be inspected in optimal lighting conditions. Do not install defective panels.

ASSEMBLY

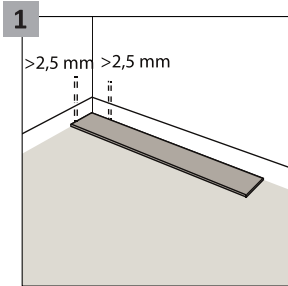


PANEL LAYING:

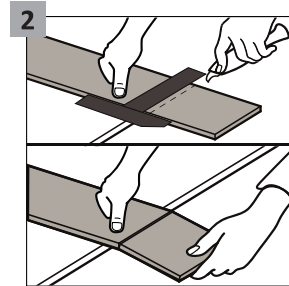
temperature: 18-30°C

humidity: 40-65%

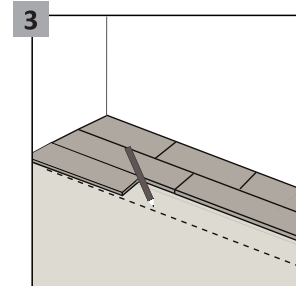
subfloor min. 15°C



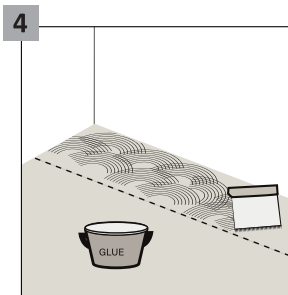
Leave 2,5 mm of perimeter space at the walls to allow the floor expansion. The maximum surface which can be laid without additional expansion joints is 200 m². Above this surface, apply an additional expansion joint and enlarge all the expansion joints up to 5 mm. The maximum length of the floor surface in one direction, which can be laid without additional expansion joints is 20 m. Above this length, apply an additional expansion joint and enlarge all the expansion joints up to 5 mm.



For additional cutting of floor panels, use a sharp knife, cut the top layer, then break the panel dynamically by leaning it on the edge. The floor panels may also be easily cut using an electric saw.

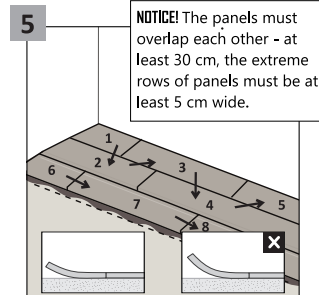


Mark a line to cover part of the substrate with glue, three rows wide and with maximum area 7m², in order to glue the panels. For best results, you can start installation from the center of the room and lay the floor in two directions.



Use only adhesives recommended by the floor manufacturer. It is required to install the panels using the so-called "wet" method - after applying the glue on the designated surface, the panels should be immediately placed and rolled.

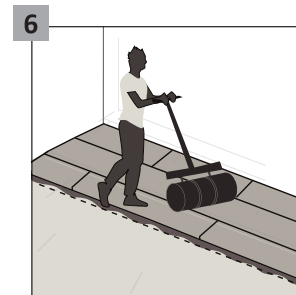
Please note that excess glue may flow out between the panel joints and be visible on the floor surface and you should remove it with a damp cloth.



NOTICE! The panels must overlap each other - at least 30 cm, the extreme rows of panels must be at least 5 cm wide.

Glue the panels to the substrate, placing them tightly one to another, leaving no gaps. Arranging the first two lines of panels perfectly straight will have a good visual effect of the entire room.

The panels should not be bent during installation.



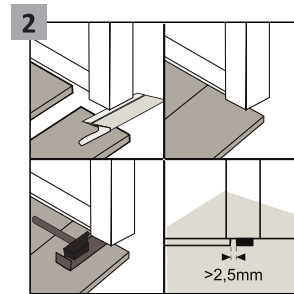
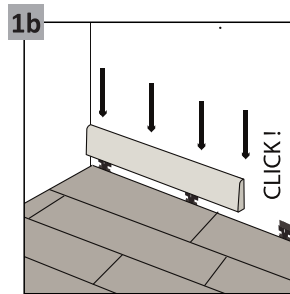
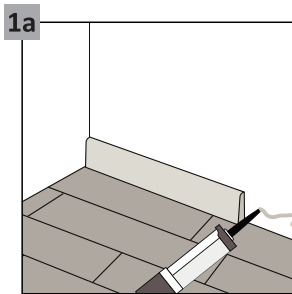
Immediately after laying three rows of panels, use a 50 kg roller to press them precisely and evenly to the ground. Rolling too late or improperly pressing hard-to-reach places may result in lack of proper adhesion and the panels sticking out from the substrate at the edges. It is recommended to re-roll the installed floor every 50 m².

ATTENTION! When using silane and polyurethane adhesives - if when you try to roll, the panels start to move apart or the glue flows out, wait 15-30 minutes and repeat the rolling process again.

ASSEMBLY

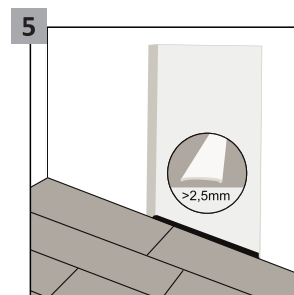
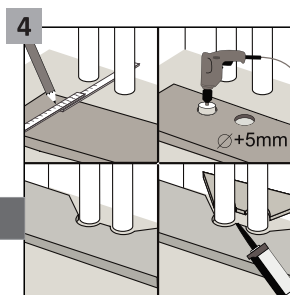
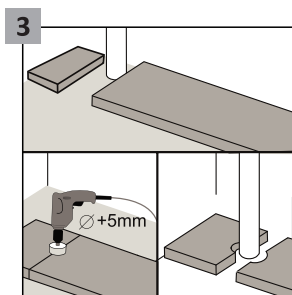


FLOOR FINISH:
 temperature: 18-30°C
 humidity: 40-65%



Expansion joints along the walls must be covered with a decorative strip, assembling it by means of glue or special clips. It is recommended to use the Arbiton strips dedicated to a given panel, which guarantee the excellent colour match and the coat resistant to scratching.

At the doors, it is recommended to undercut the profiles of door frames and leave free space over the installed panel so as not to limit its possible movement.



In the case of vertical pipes embedded in the substrate, leave free space around the pipes. Holes for the pipes must be drilled with a drill bit with a diameter that is bigger than the pipe diameter by 5 mm.

Act similarly in the case of a bigger number heating system pipes. The cut panel elements must be joined with the assembly adhesive for plastic elements. Hard-to-reach places should be additionally pressed with a small roller.

Connecting neighbouring floor coverings finish with decorative profiles leaving expansion joints indicated by the manufacturer.

ASSEMBLY



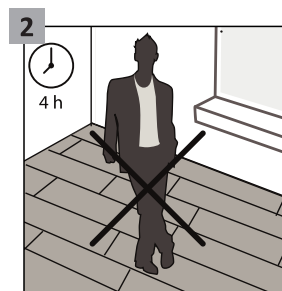
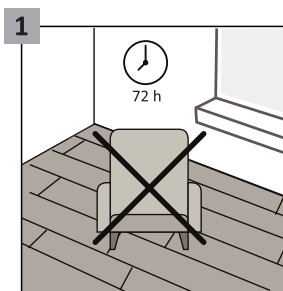
USE AND MAINTENANCE:



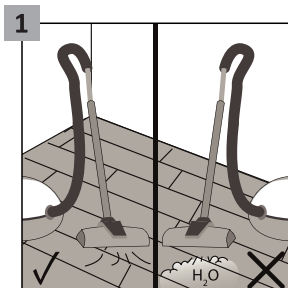
temperature: 18-30°C



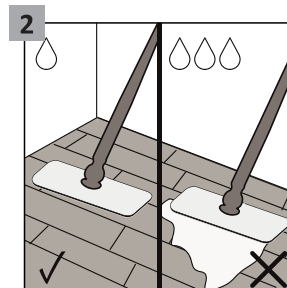
humidity: 40-65%



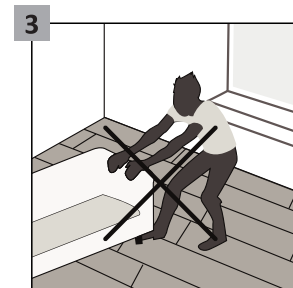
If the panels are installed to the substrate using an adhesive, heavy objects may be placed only after 72 hours from the gluing process, and the floor may be walked on gently after 4 hours from the gluing process.



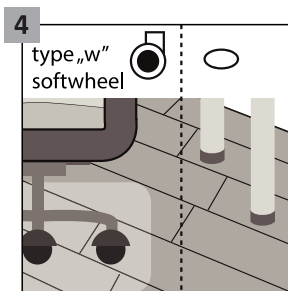
The Arbiton floor may be cleaned with a vacuum cleaner, however, it is prohibited to use steam cleaning devices.



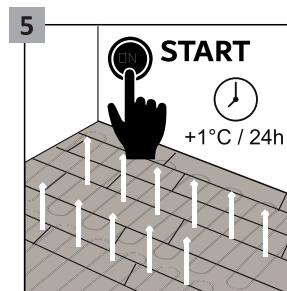
The Arbiton floor can be cleaned with a damp mop.



The movement of heavy objects along the floor is not allowed. They must be moved only after they are lifted.



Used office chairs with W-type castors, protecting the floor additionally by means of the protective net. The furniture legs must be provided with protective pads which provide protection against scratching, e.g. made of felt.



After laying the floor and waiting 48 hours, you can turn on the underfloor heating, remembering to gradually increase the air temperature in the room by 1°C per day. ATTENTION! Please note that the maximum floor surface temperature is 27°C.