

Instructions manual: Downloading a new font into the printer

Order No.:

Description: Printer

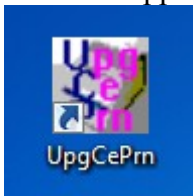
System:

1. Required Materials

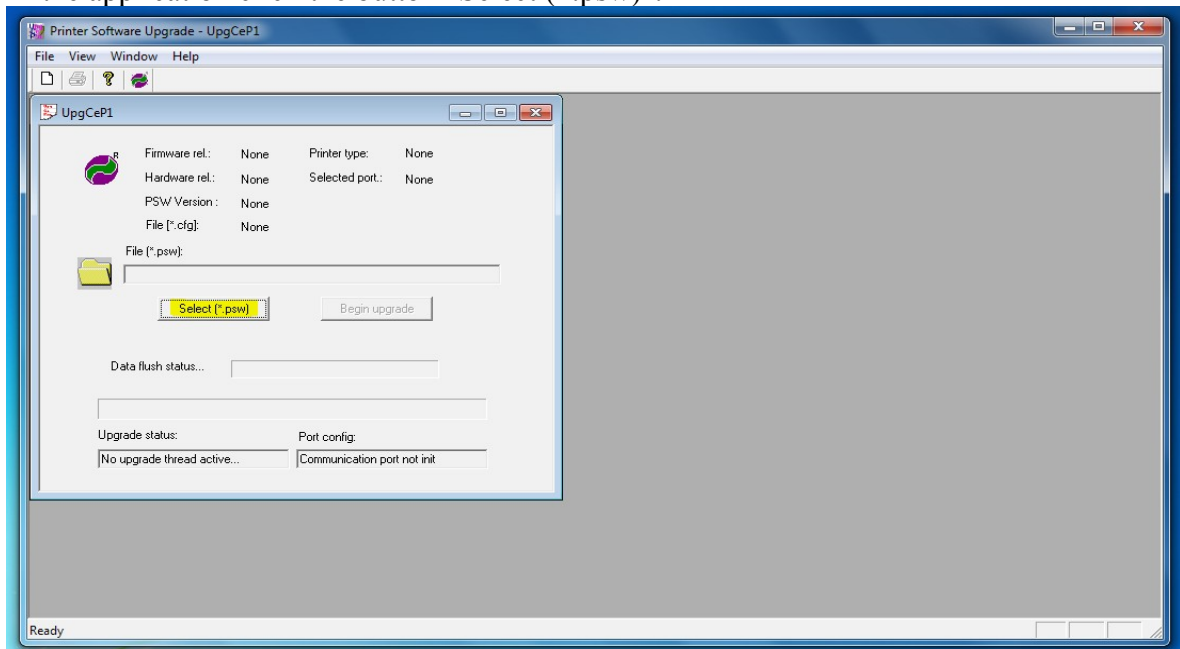
- Printer
- Serial cable for printer
- Firmware file (*.psw)

2. Steps

- 1 Connect the printer with the provided download cable to a serial port of your computer.
- 2 Make sure the printer is connected to a sufficient power supply (24VDC 1A).
- 3 Start the Application UpgCePrn.



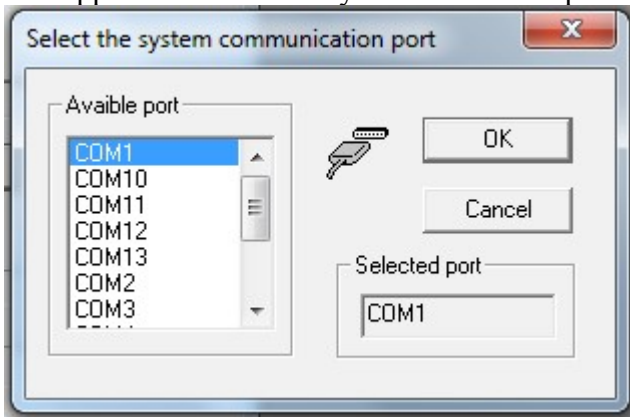
- 4 In the application click the button "Select (*.psw)".



- 5 Select the provided *.psw file in the upcoming dialog box.
- 6 After selecting the *.psw file click the button "Begin upgrade".

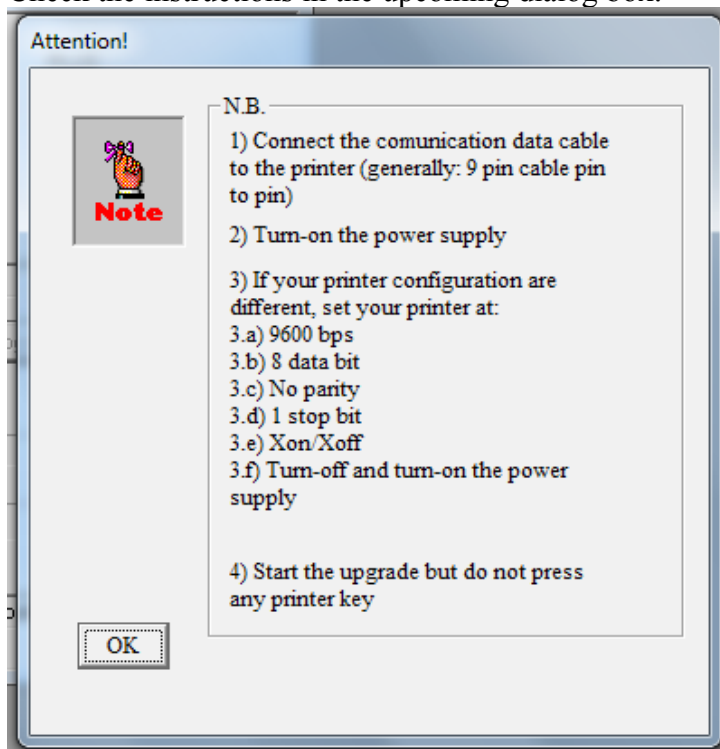


7 The application now asks you for the serial port the printer is connected to.



Note: If you are not sure, which serial port to use (i.e. because you are using an USB to serial converter) check your Device Manager.

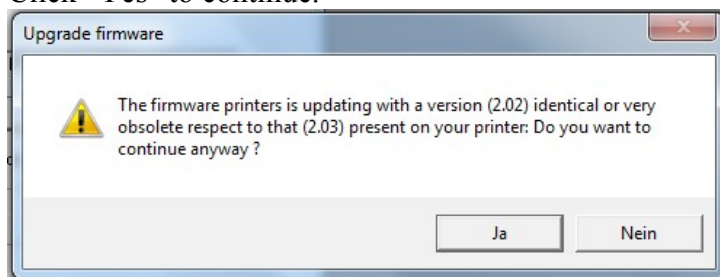
8 Check the instructions in the upcoming dialog box.



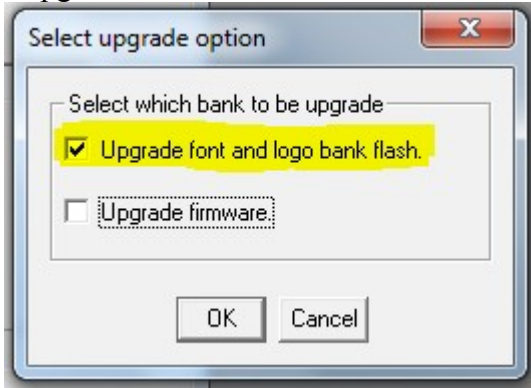
Note: If you haven't changed the settings after receiving the printer, then just click the "OK" button.

9 The application maybe informs you now, that the given firmware is older then the firmware in the printer.

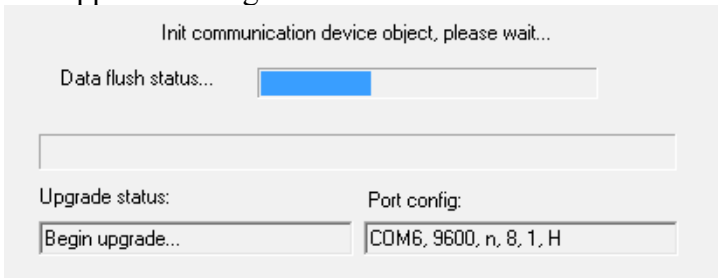
Click "Yes" to continue.



- 10 In the next dialog box select the item "Upgrade font and logo bank flash." and deselect the item "Upgrade firmware.". Proceed with the "OK" button.



- 11 The application begins now with the download of the new font.



- 12 After the successful download the application informs you with another message box.

