

EXcetera® Fire & Gas Modular Controller



EXcetera® is a modular multitasking controller designed to satisfy any monitoring task and to meet all required safety standards.

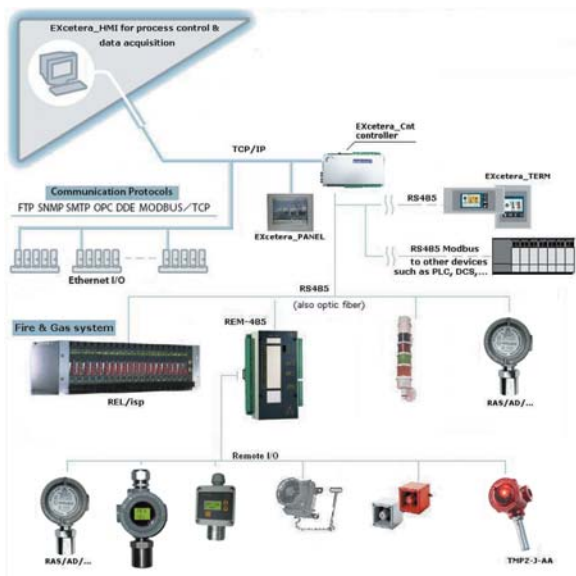
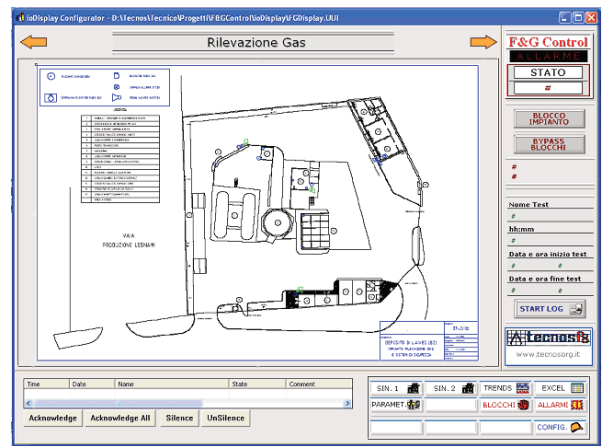
Thanks to the modular design **EXcetera®** can be inexpensively used into every type of application. From large-scale site monitoring systems in industrial complex applications to measurement and control tasks in small and medium-sized plants.

Addressable Large back-lit graphic touchscreen display with plain-text readout



EXcetera_CFG
Start-up & Configuration software package

EXcetera_HMI
High level operator interface, graphical pages, Alarms log, Real Time & Historical Trends.



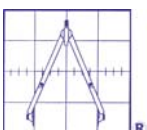
Digital bus technology with standard protocols, ModBUS RTU, OPC, TCP/IP or Ethernet ensure absolute reliability and allow Stand-alone monitoring configuration or communication with remote DCS, BMS or PC.

Redundant data processing:
SIL 1 capability [non-redundant] and SIL 2 – 3 capability. Compliant [EN 61508]

In compliance with the following Standards required for gas warning systems:

[EN 50104, EN 50271, EN 61508, EN 61779-1, EN 61779-4, EN 61779-5]

Copyright Oggioni s.a.s.



OGGIONI s.a.s. Via Lavoratori Autobianchi, 1 - P.T.B. Edif.13/O - 20832 Desio (MB) Italy
Tel.+39 0362 995062 Fax. +39 0362 622531 e-mail: info@oggionisas.com www.oggionisas.com

Remote I/O

REM-485 /T3

8 Analogue input 0-5 V; 4-20 mA
 2 Digital optocoupled inputs
 6 Free contacts relay output
 1 Analogue 4-20 mA output
 Built-in 30W Power Supply
 Battery charger circuit for emergency power operation
 Two RS-485 drivers
 Two Optical Cable Drivers 62.5/125 um 3.5 db/Km.



REM-485/T5 Redundancy Module

8 Open Collector monitored output (Sink or Source) for redundant T or H configurations outputs [24 V, 0.3 A] allow direct control of relays or other circuit elements.
 Two RS-485 drivers
 Two Optical Cable Drivers
 62.5/125 um 3.5 db/Km.

SC-12

Relay output for rail mounting
 12 SPST In System Programmable
 Relays card
 3A 110 Vac



SC-8

Relay output for rail mounting
 8 SPDT Relays card for redundant T or H configurations.
 3A 110 Vac



RS-485 Modbus Addressable
 Audible and Visible Alarms repeater



Interface Card is the easiest solution to exchange data between RS-232, RS-485 or Optical cable network. Hardware WD system checks the status of the optical path Led display and a buzzer alert in case of invalid module status.

Optobox



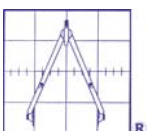
LCD Operator Terminals

LCD 185

High Performance Touch Screen Terminals
 320x240 16 colour TFT



EXcetera_Panel for High level HMI solutions
 DISPLAY STATION with Touch Screen shallow profiles 12" TFT Flat panel display
 PCI/ISA or PC 104 expansion slot
 3 Serial port RS-232/485
 Ethernet port



RAS/AD and RAS/DY Gas Transmitters



Microprocessor based Gas Transmitters designed to measure Toxic or Flammable gas concentrations with different range %LEL, %Vol., ppm, TLV, TWA.
 RS-485 RTU Modbus serial Interface.
 IP65 Aluminium alloy or Stainless Steel version
 ATEX II 2G EEX-d IIC T6 approved



DUST/AD and DUST/DY Gas Transmitters




Microprocessor based Gas Transmitters for industrial applications designed to measure Toxic or Flammable gas concentrations with different range %LEL, %Vol., ppm, TLV, TWA.
 RS-485 RTU Modbus serial Interface.
 IP65 Alluminium or Stainless Steel version.



INTELLIGENT HEAT & FLAME DETECTORS

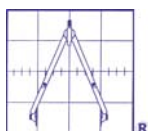
TMP2 series: Electronic fire and overheat detectors.

High reliability, dependable long-life.
 Immune from EMI disturbances and virtually eliminates false alarms.
 Different output configurations.
 Static set points and Rate of Rise feature
 Self-diagnosis procedure.
 Wide range of temperature settings. (-20°C to 120°C)
 Two wire technology.
 ATEX  II 2G EEX-d IIC T6 approved
 EN54-5 Compliant



IPES

IR3, IR/UV, IR, UV flame detector
 Selective, multi-spectral technology virtually eliminated false alarms
 Relay Outputs, 4-20mA analogue output
 Standard RS-485 communication under Protocol Modbus RTU
 ATEX: Class I, Division 1, Group B, C & D, T4



EXcetera[®]

Fire & Gas Modular Controller



EXcetera Technical Features

Controller

EXcetera_Cnt
Dual Processor
Main Processor
Watch Dog Processor
Display

Multitasking (16 task max)
32-bit ColdFire with real-time clock
RISC 8-bit for redundant safety configuration
Local 2x20 characters backlighted LCD display for diagnostic and maintenance operations

Communications

Host communication
Serial Port

Dual Loop Optical fiber Driver
OptoOPCServer
FTP
UDP
SMTP
SNMP
PPP
MODBUS

TCP
4 ports RS-485 for modem connection (PPP)
or for direct connection to serial device
Open loop or closed loop configurations
OLE for Process Control
FTP server/client file system
Streaming
Email (SMTP client)
Network management of I/O & variables
Point to Point protocol for dial-up and radio modem
Modbus/TCP, RTU Modbus RS-485

Serial I/O

Modbus devices

Max. 32 Devices for single serial port
For a maximum of 256 Analogue inputs and 199 Digital Outputs
Unlimited

Ethernet devices

Local I/O

4 Analogue Inputs
6 Opto coupled Digital Inputs
7 Free contacts Relays Outputs
1 Analogue Output

4-20 mA or 0-5 Vdc
0-5 / 0-30 Vdc
SPDT 5A at 110 Vac
0-5 Vdc or 4-20 mA

Power Supply

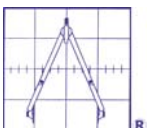
Built-in Battery backup circuit

16 Vac or 24 Vdc
7.2 A/h max.

DISTRIBUTED BY:

Copyright Oggioni s.a.s.

Copyright Oggioni s.a.s.



OGGIONI s.a.s. Via Lavoratori Autobianchi, 1 - P.T.B. Edif.13/O - 20832 Desio (MB) Italy
Tel.+39 0362 995062 Fax. +39 0362 622531 e-mail oggionisas@tin.it www.oggionisas.com