

# uPASS Go Accessories

Installation accessories for the  
uPASS Go long range reader

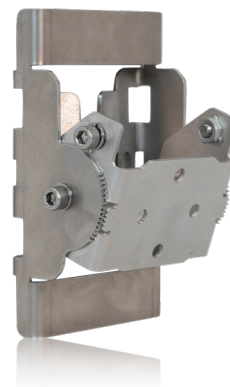
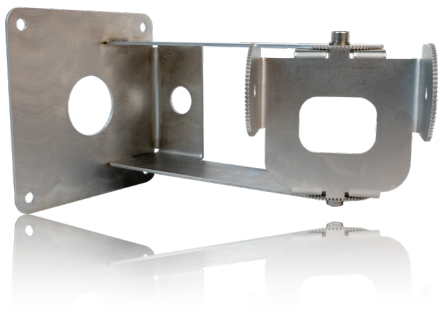


## Products:

- ✔ Mount Set Pole
- ✔ Mount Set Extension
- ✔ Weather Protection Hood

### Mount Set Pole

With the Mount Set Pole, the uPASS Go reader can be mounted easily on a pole or flat surface. The front part is screwed to the back of the reader. The Reader can be positioned at an angle using the two side screws. The Mount Set Pole is standard included with the uPASS Go reader.



### Mount Set Extension

The Mount Set Extension is an optional accessory to mount the uPASS Go reader to a wall or ceiling. The Mount Set Extension offers the possibility to position the reader both horizontally as vertically at the desired angle for an optimal line of sight. The front part of the standard Mount Set Pole needs to be installed in the extension set using the two screws.

### Weather Protection Hood

If the uPASS Go reader is used in (extreme) sunny weather conditions, it is recommended to apply a Weather Protection Hood. This hood protects the reader from temperature rise by means of long lasting exposure to the sun. The Weather Protection Hood is an optional accessory and needs to be mounted on top of the front part of the standard Mount set Pole using two screws.



Technical information	Mount Set Pole
Part number	9567631 Mount set Pole
Dimensions	140 x 85 x 55 mm ( 5.5 x 3.3 x 2.2 in) maximum diameter for round pole: 133mm (5.19 in) maximum diameter for square pole: 100mm (3.9 in)
Color	Metal
Weight	400g (14.1 oz)
Material	Stainless Steel
Compatible readers	uPASS Go uPASS Target Transit Ultimate

Technical information	Mount Set Extension
Part number	9567593 Mount Set Extension
Dimensions	130 x 125 x 190 mm ( 5.1 x 4.9 x 7.5 in)
Color	Metal
Weight	750g (26 oz)
Material	Stainless Steel
Compatible readers	uPASS Go uPASS Target Transit Ultimate

Technical information	Weather Protection Hood
Part number	9567658 Weather Protection Hood
Dimensions	250 x 203 x 92.5 mm (9.8 x 8 x 3.6 in)
Color	Grey according to RAL9006
Weight	225g (7.9 oz)
Material	UL ASA+PC
Compatible readers	uPASS Go
Document version number	1.0