



Cable ID

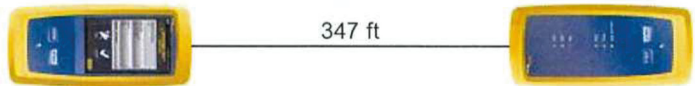
Test Limit: TIA Cat 5e Channel
Limits Version: V7.5
Date / Time: 16/05/2023 17:07:03
Headroom 10.9 dB (NEXT 3,6-4,5)
Cable Type: Cat 5e U/UTP
NVP: 69.0%

Main: Versiv
S/N: 2027061
Software Version: V6.5 Build 5
Calibration Date: 28/07/2020
Adapter: DSX-8000 (DSX-CHA804)
S/N: 20190303

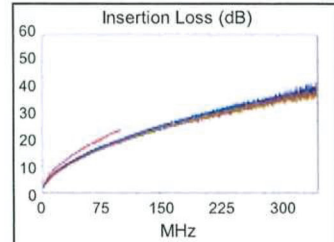
Test Summary: PASS

Remote: Versiv
S/N: 2020019
Software Version: V6.5 Build 5
Calibration Date: 28/07/2020
Adapter: DSX-8000R (DSX-CHA804)
S/N: 20060038

Length (ft), Limit 328	[Pair 7,8]	347
Prop. Delay (ns), Limit 555	[Pair 4,5]	536
Delay Skew (ns), Limit 50	[Pair 4,5]	24
Resistance (ohms)	[Pair 4,5]	18.21
Insertion Loss Margin (dB)	[Pair 4,5]	3.6
Frequency (MHz)	[Pair 4,5]	100.0
Limit (dB)	[Pair 4,5]	24.0

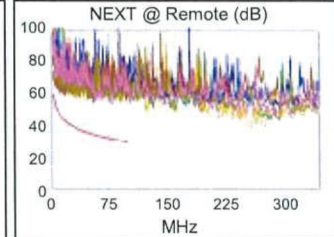
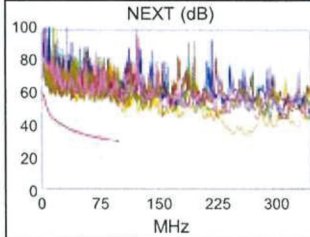


Wire Map (T568B)

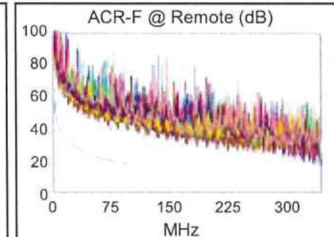
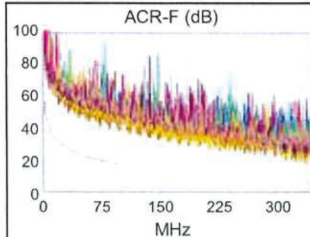


Worst Case Margin Worst Case Value

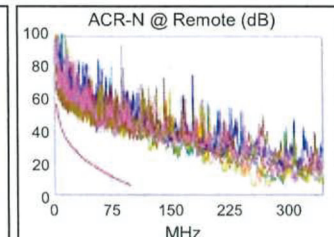
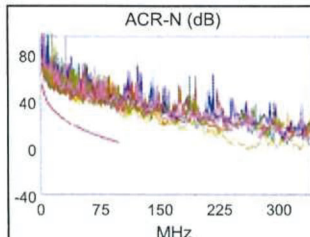
PASS	MAIN	SR	MAIN	SR
Worst Pair	3,6-4,5	3,6-4,5	1,2-3,6	4,5-7,8
NEXT (dB)	11.8	10.9	21.5	22.0
Freq. (MHz)	1.8	1.8	97.8	79.3
Limit (dB)	59.4	59.4	30.2	31.8
Worst Pair	3,6	3,6	3,6	3,6
PS NEXT (dB)	13.3	13.4	22.7	24.9
Freq. (MHz)	1.9	1.8	97.5	90.0
Limit (dB)	55.9	56.4	27.3	27.9



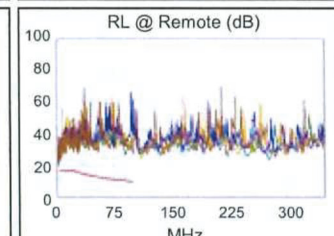
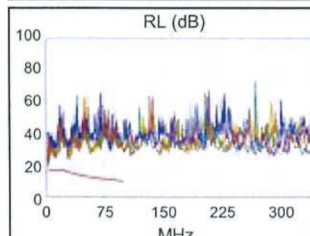
PASS	MAIN	SR	MAIN	SR
Worst Pair	3,6-4,5	4,5-3,6	3,6-4,5	4,5-3,6
ACR-F (dB)	21.4	21.8	21.4	21.8
Freq. (MHz)	98.5	98.5	98.5	98.5
Limit (dB)	17.5	17.5	17.5	17.5
Worst Pair	4,5	3,6	4,5	3,6
PS ACR-F (dB)	22.3	24.1	22.3	24.1
Freq. (MHz)	98.8	98.8	98.8	98.8
Limit (dB)	14.5	14.5	14.5	14.5



N/A	MAIN	SR	MAIN	SR
Worst Pair	3,6-4,5	3,6-4,5	1,2-3,6	3,6-4,5
ACR-N (dB)	12.4	11.5	25.4	29.2
Freq. (MHz)	1.8	1.8	97.8	96.8
Limit (dB)	56.4	56.4	6.5	6.7
Worst Pair	3,6	3,6	3,6	4,5
PS ACR-N (dB)	14.0	14.0	26.7	30.0
Freq. (MHz)	1.9	1.8	97.5	96.8
Limit (dB)	52.8	53.4	3.6	3.7



PASS	MAIN	SR	MAIN	SR
Worst Pair	7,8	7,8	7,8	7,8
RL (dB)	7.6	8.0	8.5	8.0
Freq. (MHz)	11.5	3.4	29.9	3.4
Limit (dB)	17.0	17.0	15.3	17.0



Compliant Network Standards:
 10BASE-T 100BASE-TX 100BASE-T4
 1000BASE-T 2.5GBASE-T ATM-25
 ATM-51 ATM-155 100VG-AnyLan
 TR-4 TR-16 Active TR-16 Passive