

## INDOOR CALL POINTS

### MCP1 - Resistor & Clean Contact Model

The MCP1A is supplied with a resistor and normally open, clean contact electrical options. A variety of resistor versions are available with 470W and 680W offered as standard. The MCP1B allows for connection to 'savwire' systems.

### MCP2 - LED Model

All MCP2 products are supplied with an LED indicator as standard. The MCP2A is supplied with a resistor and normally open, clean contact electrical options. A variety of resistor values are available by request with 470W offered as standard. The MCP2B is designed for connection to 'savwire' systems.

### MCP3 - NO/NC Contact Model

The MCP3A is supplied with one normally open and one normally closed contact. Single pole changeover switching can be achieved with the use of two terminal blocks.

### MCP4 - Double Pole Changeover Contact Model

The MCP4A is supplied with a double pole changeover set of contacts. The product uses two terminal connector blocks and wiring to the relevant terminals provides a normally open or normally closed operation.

### Intelligent MCP

KAC offers a comprehensive range of intelligent indoor call points for use with compatible systems. These offer a wide variety of features to meet the requirements of OEM system designers.

For further information please contact the KAC customer service team.

Indoor call points are available in red, yellow, green, white, orange or blue dependant on order volume.

### MOUNTING BOXES

SR Surface Mounting Box

### ADAPTOR TRAYS

ETT1 Adaptor tray – Europe

ETT3 Adaptor tray – US/Australia

## OUTDOOR CALL POINTS

### WCP1 - Resistor & Clean Contact Model

The IP67 sealed WCP1A is supplied with a resistor and normally open, clean contact electrical options. A variety of resistor versions are available, with 470W and 680W offered as standard.

### WCP2 - LED Model

All IP67 sealed WCP2 products are supplied with an LED indicator as standard. The WCP2A is supplied with both a resistor and normally open, clean contact electrical options. A variety of resistor values are available by request, with 470W offered as standard.

### WCP3 - NO/NC Contact Model

The IP67 sealed WCP3A is supplied with one normally open and one normally closed contact. Single pole changeover switching can be achieved with the use of two terminal blocks.

### WCP4 - Double Pole Changeover Contact Model

The IP67 sealed WCP4A is supplied with a double pole changeover set of contacts. The product uses two terminal connector blocks and wiring to the relevant terminals provides a normally open or normally closed operation.

### Intelligent WCP

KAC offers a comprehensive range of intelligent outdoor call points for use with compatible systems. These offer a wide variety of features to meet the requirements of OEM system designers.

For further information please contact the KAC customer service team.

Outdoor call points are available in red, yellow, green, white or blue dependant on order volume.

### ACCESSORIES

KG1 x 10 Pack of 10 Spare Glass Elements

SC070 Pack of 10 Spare Test Keys

SC071 Pack of 20 Spare MCP Terminals

PS200 Transparent Hinged Cover

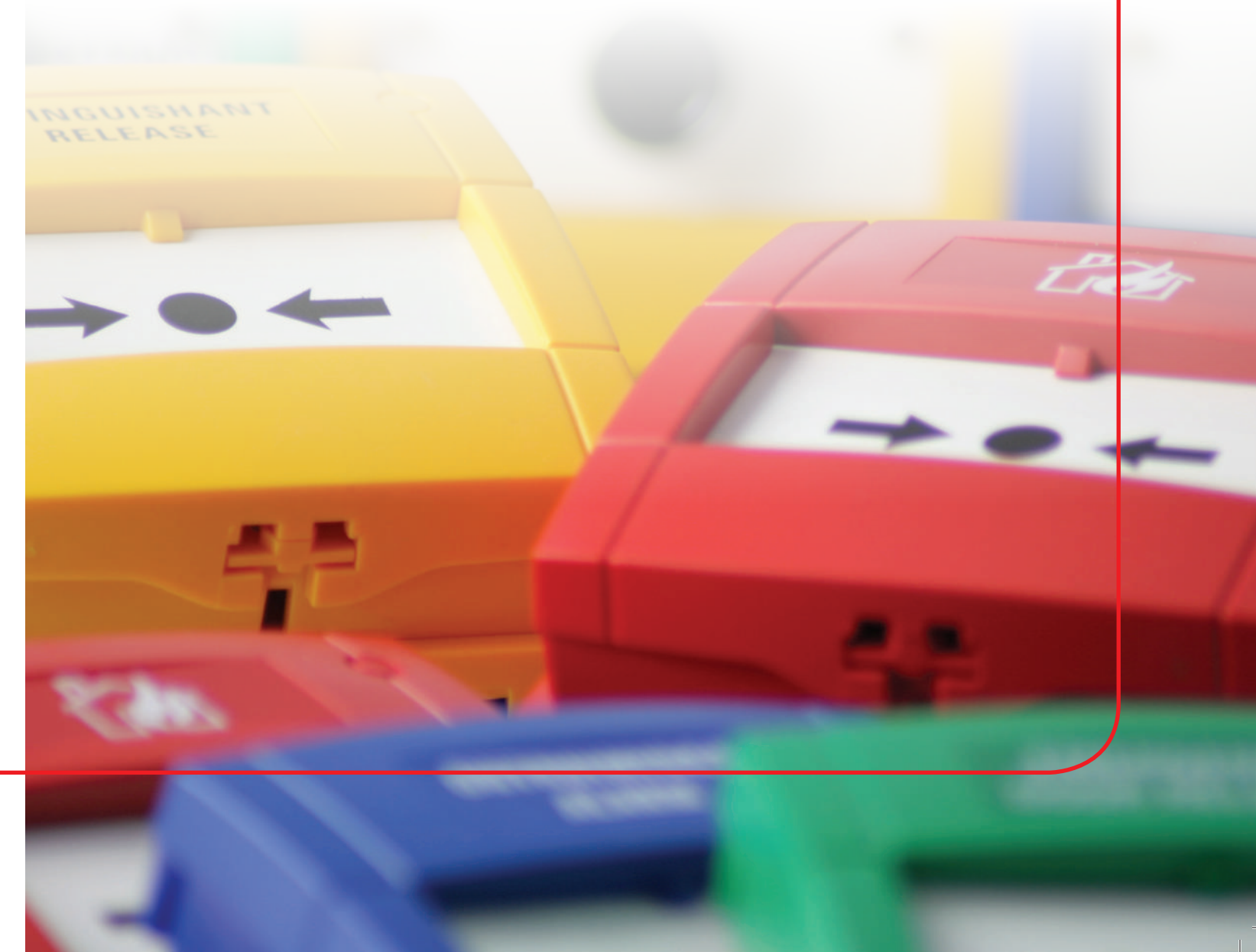
P056 Pack of 5 Hinged Cover Seals

PS210 EN54 Flexible Operating Elements



THE INTELLIGENT CHOICE

# CALL POINTS



# UNIVERSAL PRODUCT RANGE

The KAC product range offers unparalleled choice. Customers can choose from conventional or intelligent, surface-mounted or flush, glass or flexi elements and a choice of colours for both indoor and outdoor use.

## FLEXIBLE SOLUTIONS

> KAC offers the most comprehensive range of indoor and outdoor call points for the commercial fire and security industry, with millions of products shipped globally every year.

When KAC invented a new manual break-glass call point 40 years ago, it set the global standard. Through our continued commitment to product design and development it is still the most widely used, installer friendly product on the market today.

Thousands of product variants are available according to type of use, design feature and bespoke development, providing huge flexibility for OEM partners.

## UNRIVALLED BENEFITS FOR CUSTOMERS AND END USERS

- **Proven reliability** – tried and tested in the market
- **Ease of installation** – plug & play design with a choice of adaptor trays
- **Simple testing and maintenance** – universal tamper-proof tool
- **Flexibility** – range of colour and marking options for specialist applications
- **Full approvals** – EN54-11 certification & LPCB listing
- **Unrivalled technical support** – dedicated in-house expertise

## PRODUCTS FOR ALL APPLICATIONS

> Whether you work in fire or security or are specifying products for indoor or outdoor use, KAC has the ideal solution. The MCP fire range is renowned for offering multiple product options and fast and simple installation. The MCP security range is built to the same exacting standards but is specific to the access control market, with single pole and double pole options. The IP67 sealed WCP range is for use in outdoor environments or where water and dust are present. Each range is available in a variety of colours for more diverse applications.

For specialist applications, customers can choose from ATEX & IECEx approved devices for hazardous environments, MED approved call points for use in the marine industry and other products for specific market requirements. In environments where smoke vents are in operation, KAC has developed a call point to meet the forthcoming requirements of EN12101:9.

## OEM BENEFITS

> With KAC, Original Equipment Manufacturers (OEMs) can fully integrate their electronics into the call point housing. This can encompass full design and layout

of electronic interfaces, component sourcing and assembly through to final test and shipping. The package also extends to bespoke branding and packaging, not to mention the additional benefits of cross listing for approvals.

## PROVEN QUALITY AND RELIABILITY

> KAC has a long heritage of delivering the highest quality call points. Having manufactured over 30 million devices we have a proven track record of ensuring that our products and our customers' systems perform with outstanding reliability.

## FAST AND EASY INSTALLATION

> All KAC call point products are designed to save time and offer a first fix option with a unique 'plug and play' concept. Upon initial installation, cabling can be terminated into a special terminal block. The call point can then be fitted with a simple continuity link, enabling the wiring of the fire alarm system to be tested without the call point itself being in place. As the call point does not need to be fitted until final commissioning, any on-site damage is eliminated.

Upon final commissioning, the continuity link is removed from the terminal block, which is then plugged directly into the back of the MCP. A simple but effective process with no re-termination. The call point is now electrically installed, the housing screwed to the back box, the break-glass or resettable element placed in position and secured.

The same principles apply to the IP67 sealed WCP. With a choice of cable entries, the product features a snap fit cover to significantly reduce installation time.

## SIMPLE MAINTENANCE

> The combined test, reset and cassette-release mechanism within the call point means only a single maintenance tool is required. The unique nature of this tool makes KAC call points tamper-proof. If the cassette is removed without being isolated from the panel, the alarm will sound. So there's no chance of suddenly discovering a call point has been disabled through accident or vandalism.

## EN54 COMPLIANT

> All KAC call points are EN54 compliant and third party approved to ensure the highest quality and

safety. Extensive work with customers and notified bodies in EN markets enables products to be developed for particular systems and geographic locations.

## INTERCHANGEABLE ELEMENTS

> Interchangeable operating elements allow a break-glass MCP to be quickly converted to a resettable MCP and vice versa. This is much easier than changing the product and provides a simple and cost effective solution.

## SWITCHES AND ACCESSORIES

> KAC provides a choice of switching options for all types of automation and control solutions including key switches and push buttons. These are available in the classic KAC housings and can be branded to suit individual requirements.

A wide range of accessories are available to protect against accidental activation, along with mounting aids to improve installation.

