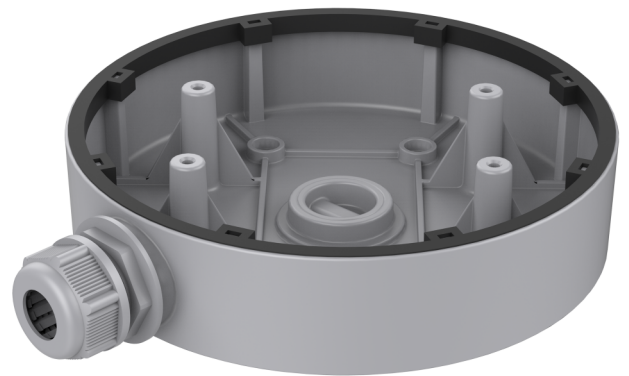


TVD-BB4

TruVision Back Box for S6 varifocal dome camera with cable harness

Overview

The TruVision TVD-BB4 back box can be used to install Series 6 IP cameras TVD-5604H / TVD-5605H / TVD-5606H on a flat surface.



Details

- Cable outlets at side and bottom
- Can be used indoor and outdoor
- Should only be used on a flat surface

TVD-BB4

TruVision Back Box for S6 varifocal dome camera with cable harness

Technical specifications

General

Bracket type	Camera
Support type	TruVision mini domes
Bracket mounting part	Mount connection box
Mount type	Surface mount

Physical

Physical dimensions	Ø 155 × 36 mm
Net weight	300 g
Colour	Grey (Pantone 428c)
Material	Aluminium



As a company of innovation, Carrier Fire & Security reserves the right to change product specifications without notice. For the latest product specifications, visit firesecurityproducts.com online or contact your sales representative.

Last updated on 2 April 2024 - 17:14