

HP Latex Plus Cutting Solutions

Grow your business by enhancing your HP Latex printer with our unique print AND cut workflow¹



HP Latex 54 Plus Cutting Solution



HP Latex 64 Plus Cutting Solution



HP FlexiPRINT and CUT RIP

Complete HP solution—outstanding print and cut

- Cut full bleed stickers that don't curl when printed with HP Latex Technology.
- Enjoy fast, accurate cutting and downforce up to 600 grams.
- HP FlexiPRINT and CUT RIP includes True Shape Nesting—automatically save up to 50% more media.²
- HP Applications Center design tools are included, for easy creation of new applications in just 3 steps.³

Up to 50% time savings with true print AND cut⁴

- Print AND cut at the same time—versus print OR cut integrated devices—with our reliable, dual-device solution.
- Cut right away when printing with HP Latex Technology—with no degas time, you can deliver same day.
- Quickly deliver short-term print and cut jobs, with no need to laminate scratch-resistant HP Latex prints.⁵

Easy and reliable workflow

- Print/cut in a few steps—add cut lines from the RIP, select cutting presets, and easily send to production.
- Accurate job recognition and error-free cutting with HP Barcode and Optical Position System configurations.
- Easy-to-use cutter with a simple touchscreen interface and media basket.

For more information, please visit
hp.com/go/latex-cutting-solutions

Join the community, find tools, and talk to experts.
Visit the HP Latex Knowledge Center at

hp.com/communities/LKC

¹ Each HP Latex Plus Cutting Solution can be directly connected to HP Latex 100, 300, 500 and 700 Printer Series. In order to connect with HP Latex 800 Printer Series an upgrade of HP FlexiPRINT and CUT RIP is needed.

² Compared to printing without nesting. Based on performance demonstration by HP, September 2020.

³ Requires an HP Applications Center account, Internet connection, and connected Internet-capable device. For more information, see www.hpapplicationscenter.com.

⁴ Based on internal HP testing, September 2020, comparing the HP Latex Print and Cut Plus Solution with integrated print and cut solutions at a comparable cost. An integrated printer/cutter device is a large-format printer that has a contour cutter embedded in the same printer that prints the media, then moves the media backwards to cut the printed output.

⁵ Scratch-resistance comparison based on testing third-generation HP Latex Inks and representative hard-solvent inks on self-adhesive vinyl and PVC banner. HP image permanence estimates by HP Image Permanence Lab. Outdoor display permanence tested according to SAE J2527 on a range of media, including HP media; in a vertical display orientation in simulated nominal outdoor display conditions for select high and low climates, including exposure to direct sunlight and water; performance may vary as environmental conditions change.

Help me choose

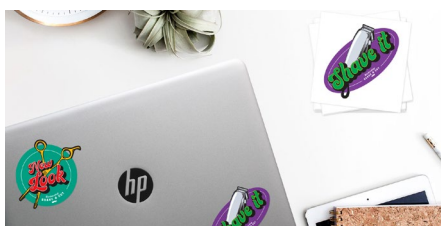


	HP Latex 54 Plus Cutting Solution	HP Latex 64 Plus Cutting Solution
Product	9TL92A	9TL91A
Description	Grow with this 54-inch business-ready cutting solution	Expand into wider applications with this 64-inch cutting solution
Maximum cut width	135 cm (53.1 in)	158 cm (62.2 in)
Maximum acceleration	Up to 3G	
Maximum cut speed	Up to 113 cm/sec (44 in/sec) diagonal	
Accuracy	0.2% of movement or 0.25 mm, (0.01 in) whichever is greater	
Cute force	0 to 600 grams of downforce, in 5-gram steps	
Cut thickness	0.05 to 0.25 mm (0.002 to 0.01 in); 0.8 mm (0.03 in) with optional sandblast blade	
Connectivity (standard interfaces)	USB and Ethernet (LAN)	
Cutter dimensions (w x d x h)	1765 x 704 x 1112 mm (69.5 x 27.7 x 43.8 in)	1960 x 704 x 1112 mm (77.2 x 27.7 x 43.8 in)
Cutter (shipping) dimensions (w x d x h)	2230 x 420 x 710 mm (87.8 x 16.5 x 28 in)	2230 x 420 x 710 mm (87.8 x 16.5 x 28 in)
Cutter weight	43.5 kg (96 lb)	48 kg (106 lb)
Cutter (shipping) weight	71 kg (156 lb)	74 kg (163 lb)
What's in the box	HP Latex cutter, cutter stand, media basket, HP FlexiPrint and Cut RIP, HP Cutter Control software, quick reference guide, setup poster, documentation software, power cords, standard holder (1), standard blades (2), cut-off knife (1), 3-in media flanges (set of 2)	
Consumption	34W (working mode)	
Requirements	AC 100-240 V; 50/60 Hz; 2 A	
Warranty	One-year limited hardware warranty	

Powered by:



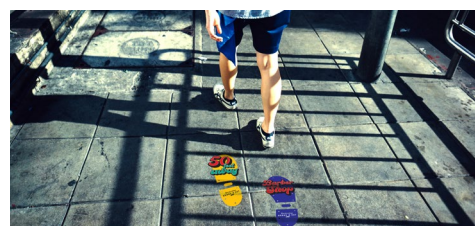
Applications



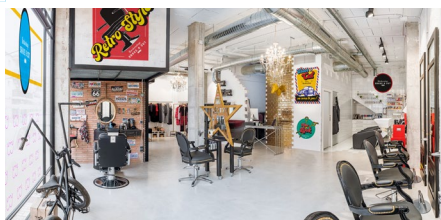
LABELS AND STICKERS



CUSTOMIZABLE CLOTHING



FLOOR GRAPHICS



WALLS DECALS



WINDOW GRAPHICS



VEHICLE GRAPHICS

©Copyright 2018, 2021 HP Development Company, L.P. The information contained herein is subject to change without notice.

The only warranties for HP products and services are set forth in the express warranty statements accompanying such products and services. Nothing herein should be construed as constituting an additional warranty. HP shall not be liable for technical or editorial errors or omissions contained herein.

4AA7-1558ENE, May 2021

